



First Choice
Group

SPARE PARTS DIAGRAM FOR



HOSHIZAKI

Ice Machine
IM-45WLE
IM-45WLE-25

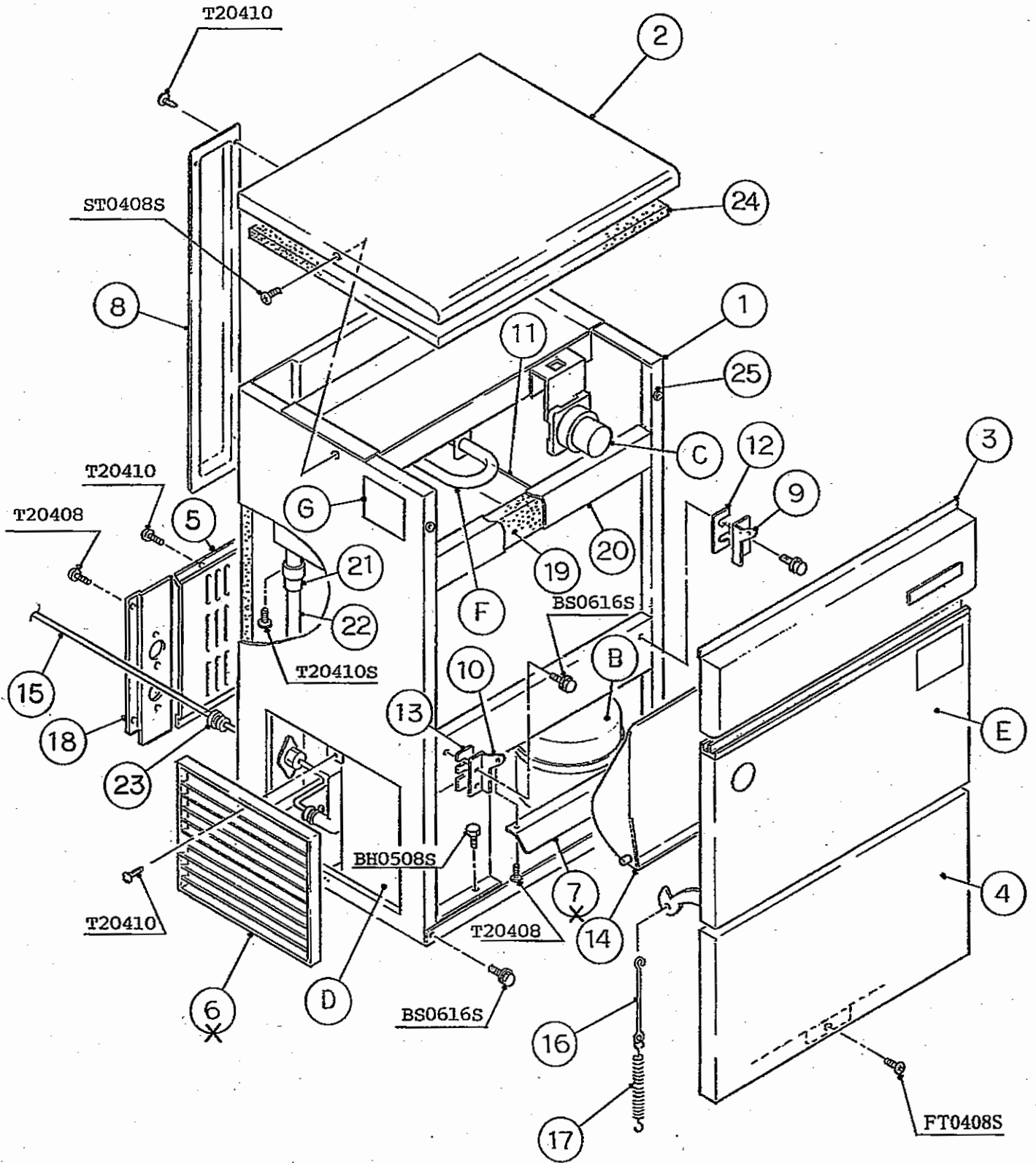
First Choice Group
Blakeney Way, Kingswood Lakeside
Cannock, Staffs, WS11 8LD
TEL: 01543 577778 FAX: 01543504141
Email: enquires@firstchoice-cs.co.uk
Web: www.firstchoice-cs.co.uk



**HOSHIZAKI
SELF-CONTAINED CUBER**

**MODEL IM-45WLE
IM-45WLE-25**

PARTS LIST



HE, GENERAL, OCEANIA, KOREA

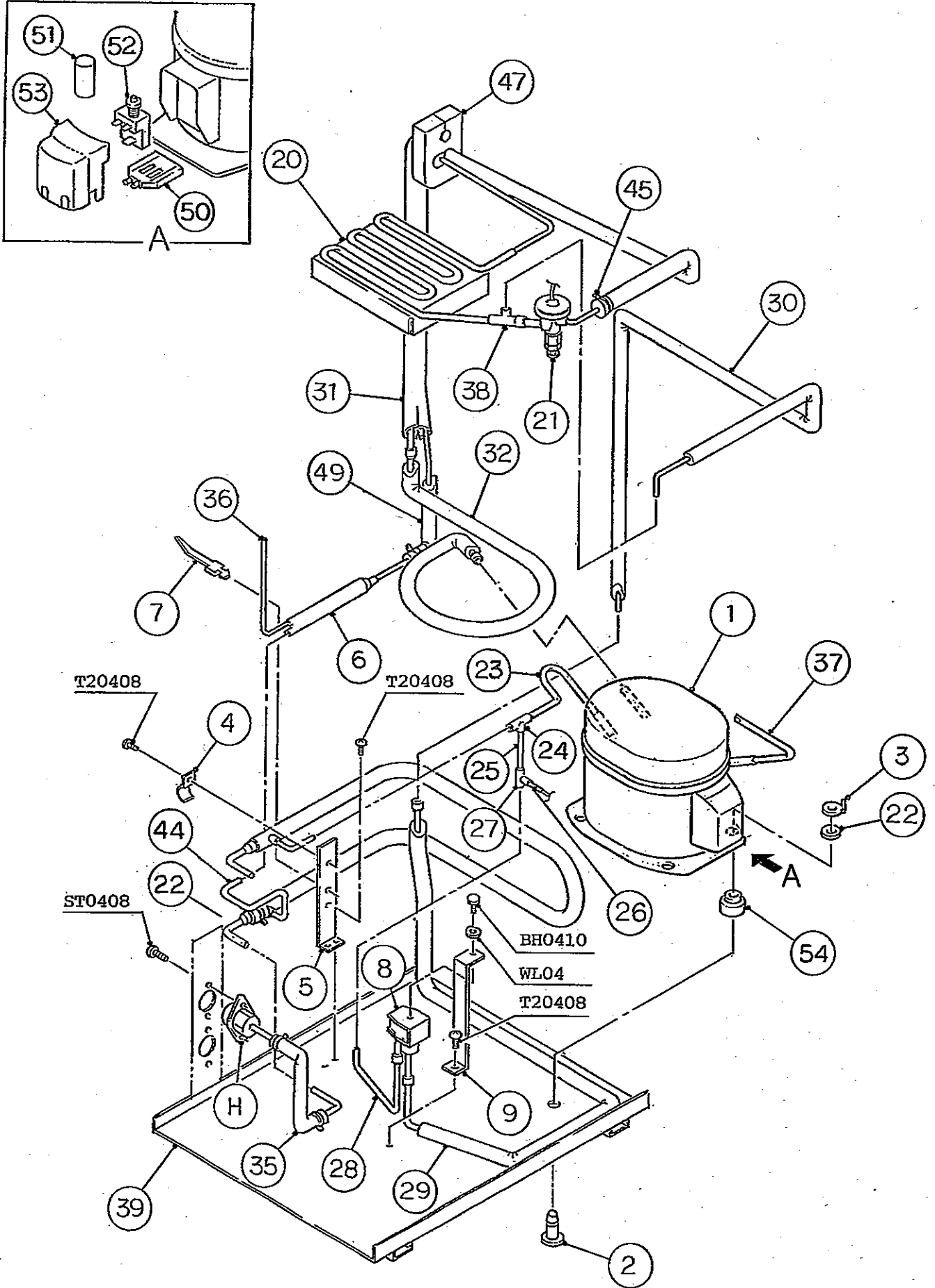
MODEL : IM-45WLE, IM-45WLE-25 TITLE : A. ICE CUBER ASSY							
INDEX NO.	DESCRIPTION	MATERIAL OR MODEL NUMBER	PART NUMBER	REQ'D NUMBER			
				G-1 H-0	H-1,J-0 K-0	K-1,A-0 B-0,C-0	C-1 D-0
B	REFRIGERATION CIRCUIT	-	1H1581A01	1	1	-	
			1H2131A01			1	1
C	ICEMAKING MECHANISM ASSY	(IM-45WLE)	1H0253A09	1	1	-	
			1H0253A14			1	1
	ICEMAKING MECHANISM ASSY	(IM-45WLE-25)	-	1	1	1	1
D	CONTROL BOX ASSY	-	2H3209A02	1	-		
			2H3209A04		1	-	
			2H3209A07			1	1
			2H3209A09				
			2H6762A02				
E	DOOR ASSY	-	3H0283A08	1	1	1	1
F	WATER CIRCUIT ASSY	(IM-45WLE)	3H9600A01	1	1	1	1
	WATER CIRCUIT ASSY	(IM-45WLE-25)	-	1	1	1	1
G	LABEL LOCATION	(IM-45WLE)	3X0068A01	1	-		
			3X0068A02		1	-	
			3X0068A03			1	1
			3X0068A04				
	LABEL LOCATION	(IM-45WLE-25)	-	1	1	1	1
1	UNIT FRAME	PAINTED STEEL	1H0263G09	1	1	1	1
		PAINTED STEEL	1H2949G02				
2	TOP PANEL	S.S	3H9606-02	1	1	1	1
3	FRONT PANEL (UPPER)	S.S	3H8109G02	1	1	1	1
4	FRONT PANEL (LOWER)	S.S	3X0066-01	1	1	1	1
5	REAR PANEL	G.S	3X0067-01	1	1	1	1
6	LOUVER	ABS	101812-09	2	2	x	
7	COVER	ABS	4H5787G01	1	1	x	
8	PIPE COVER	G.S	3H0202-01	1	1	1	1
9	HINGE (RIGHT)	S.S	4H2583-01	1	1	1	1
10	HINGE (LEFT)	S.S	4H2584-01	1	1	1	1
11	DRAIN PAN	ABS	2H1440-01	1	1	1	1
12	HINGE SPACER (A)	S.S	4H0605-01	REQ'D	REQ'D	REQ'D	REQ'D
13	HINGE SPACER (B)	S.S	4H0605-02	REQ'D	REQ'D	REQ'D	REQ'D
14	SLOPE	ABS	2H1349-01	1	1	1	1

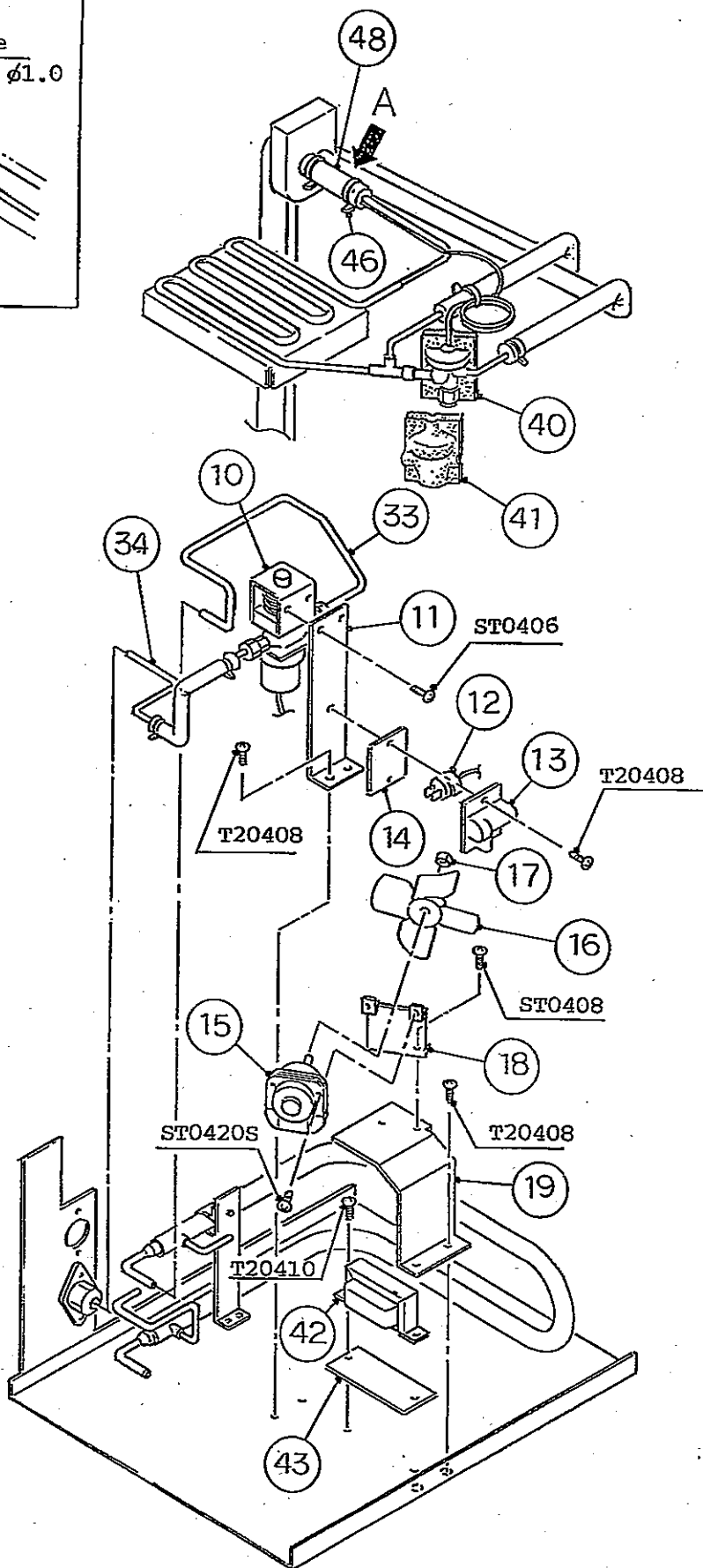
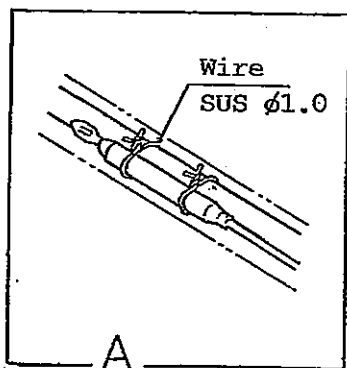
HE, GENERAL, OCEANIA, KOREA

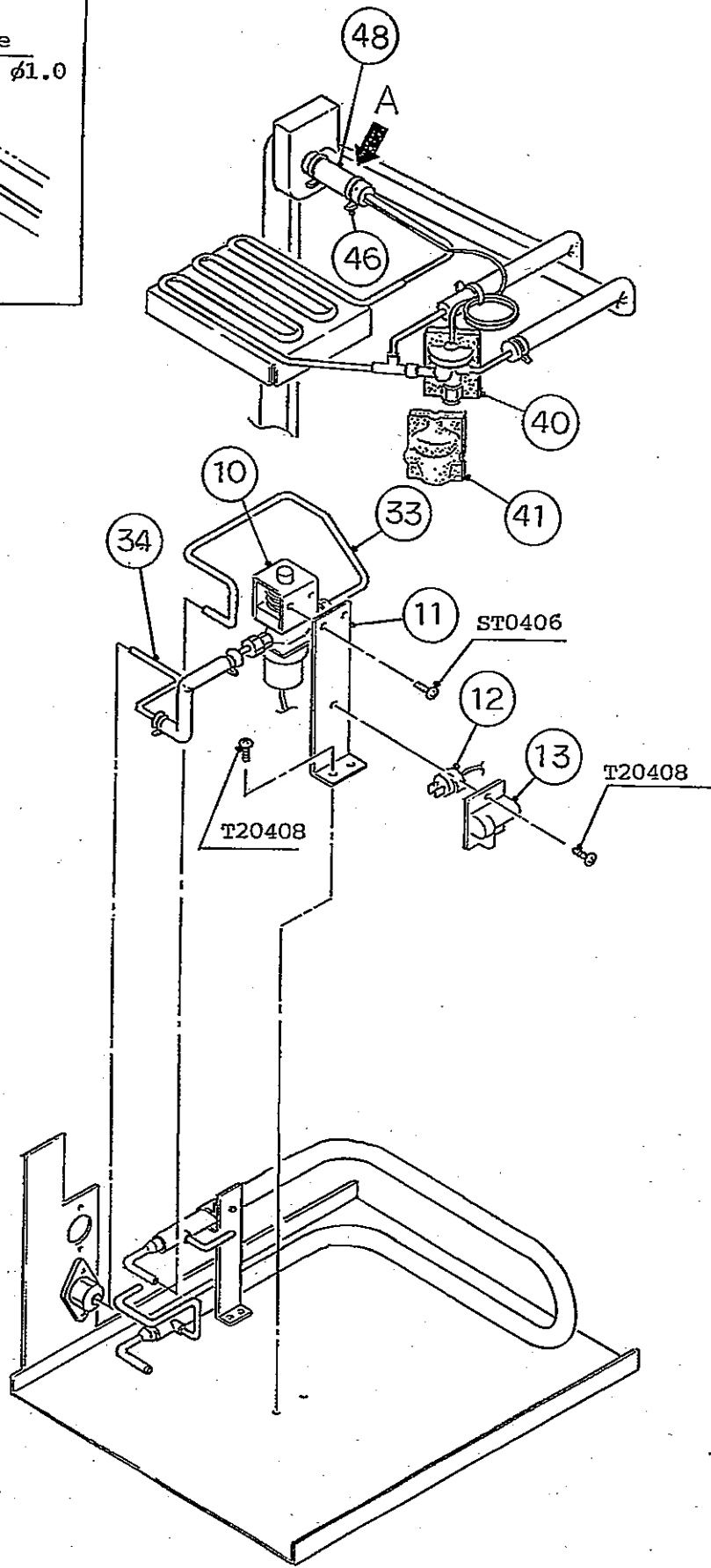
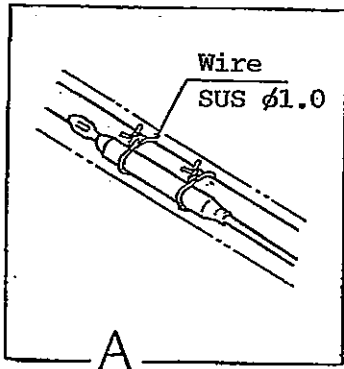
MODEL : IM-45WLE, IM-45WLE-25 TITLE : A. ICE CUBER ASSY							
INDEX NO.	DESCRIPTION	MATERIAL OR MODEL NUMBER	PART NUMBER	REQ'D NUMBER			
				D-1	D-2 E-0	E-1	
B	REFRIGERATION CIRCUIT	-	-				
			1H2131A01	1	1	1	
C	ICEMAKING MECHANISM ASSY	(IM-45WLE)	-				
	ICEMAKING MECHANISM ASSY	(IM-45WLE-25)	-	1	1	1	
D	CONTROL BOX ASSY	-	-				
			-				
			2H3209A07	1	-		
			2H3209A09		1	-	
			2H6762A02			1	
E	DOOR ASSY	-	3H0283A08	1	1	1	
F	WATER CIRCUIT ASSY	(IM-45WLE)	3H9600A01	1	1	1	
	WATER CIRCUIT ASSY	(IM-45WLE-25)	-	1	1	1	
G	LABEL LOCATION	(IM-45WLE)	-				
			-				
			3X0068A03	1	1	-	
			3X0068A04			1	
	LABEL LOCATION	(IM-45WLE-25)	-	1	1	1	
1	UNIT FRAME	PAINTED STEEL	1H0263G09	-			
			1H2949G02	1	1	1	
2	TOP PANEL	S.S	3H9606-02	1	1	1	
3	FRONT PANEL (UPPER)	S.S	3H8109G02	1	1	1	
4	FRONT PANEL (LOWER)	S.S	3X0066-01	1	1	1	
5	REAR PANEL	G.S	3X0067-01	1	1	1	
6	-	-	-				
7	-	-	-				
8	PIPE COVER	G.S	3H0202-01	1	1	1	
9	HINGE (RIGHT)	S.S	4H2583-01	1	1	1	
10	HINGE (LEFT)	S.S	4H2584-01	1	1	1	
11	DRAIN PAN	ABS	2H1440-01	1	1	1	
12	HINGE SPACER (A)	S.S	4H0605-01	REQ'D	REQ'D	REQ'D	
13	HINGE SPACER (B)	S.S	4H0605-02	REQ'D	REQ'D	REQ'D	
14	SLOPE	ABS	2H1349-01	1	1	1	

IM-45WLE, 45WLE-25 B. REFRIGERATION CIRCUIT (1/2)

(D-2) (E-0) (E-1) ~
 (C-0) (C-1) (D-0) (D-1)
 (K-0) (K-1) (A-0) (B-0)
 (G-1) (H-0) (H-1) (J-0)







HE, GENERAL, OCEANIA, KOREA

MODEL : IM-45WLE, IM-45WLE-25 TITLE : B. REFRIGERATION CIRCUIT							
INDEX NO.	DESCRIPTION	MATERIAL OR MODEL NUMBER	PART NUMBER	REQ'D NUMBER			
				G-1 H-0	H-1,J-0 K-0	K-1,A-0 B-0,C-0	C-1 D-0
H	FITTING (P) ASSY	(S-0867)	3H7961A01	2	2	2	2
1	COMPRESSOR	FR8.5G	450891-01	1	1	1	1
2	STEEL PIN	-	452255-01	4	4	4	4
3	CLIP	-	452256-01	4	4	4	4
4	CLAMP (B) - CONDENSER	G.S	4H0622-01	4	4	4	4
5	BRACKET - CONDENSER	G.S	4H5731-01	2	2	2	2
6	DRIER	DY-15QHD-9	458772-01	1	1	1	1
7	TIE	T30RSF	436156-01	1	1	1	1
8	HOT GAS SOLENOID VALVE	AMS-24B10HD-1	418866-02	1	1	1	1
9	BRACKET - HOT GAS VALVE	G.S	4H5186-01	1	1	1	1
10	WATER REGULATOR	WV11-33MHD-6	448082-01	1	1	1	1
11	BRACKET - WATER REGULATOR	G.S	4X5632-01	1	1	1	1
12	PRESSURE SWITCH	SAP-15-HD	425648-02	1	1	1	1
13	BRACKET - PRESSURE SWITCH	ABS	425506-01	1	1	1	1
14	INSULATION	ABS	4H3046G01	1	1	x	
15	FAN MOTOR	SE14ABF-4-BJA7	415080-01	1	1	x	
16	FAN BLADE	Φ101.5	414782-01	1	1	x	
17	FAN RING	-	414782F01	1	1	x	
18	BRACKET - FAN MOTOR	S.S	4H5721-01	1	1	x	
19	COVER - TRANSFORMER	G.S	3H9969-01	1	1	x	
20	EVAPORATOR	(IM-45WLE)	3H5611G02	1	1	1	1
	EVAPORATOR	(IM-45WLE-25)	3H3941G01	1	1	1	1
21	EXPANSION VALVE	FSE-3QHD-1	448190-01	1	1	1	1
22	WASHER	-	450894-01	4	4	4	4
23	COPPER TUBE (A)	COPPER	4X4452-01	1	1	1	1
24	TÉE	COPPER	420041-02	1	1	1	1
25	COPPER TUBE (B)	COPPER	4H5725-01	1	1	1	1
26	COPPER TUBE (C)	COPPER	4H5725-02	1	1	1	1
27	TEE	COPPER	417394-01	1	1	1	1
28	COPPER TUBE (D)	COPPER	4X4455G01	1	1	1	1
29	COPPER TUBE (E) - HOT GAS	COPPER	3H3921G01	1	1	1	1
30	COPPER TUBE (G) - HOT GAS	COPPER	3H3923G01	1	1	1	1
31	HEAT EXCHANGER	-	3H3927G01	1	1	1	1
32	COPPER TUBE (F)	COPPER	3X0072G01	1	1	1	1
33	PIPE (A) - WATER SUPPLY	COPPER	3H3920G01	1	1	1	1

HE, GENERAL, OCEANIA, KOREA

MODEL : IM-45WLE, IM-45WLE-25 TITLE : B. REFRIGERATION CIRCUIT							
INDEX NO.	DESCRIPTION	MATERIAL OR MODEL NUMBER	PART NUMBER	REQ'D NUMBER			
				D-1	D-2 E-0	E-1	
H	FITTING (P) ASSY	(S-0867)	3H7961A01	2	2	2	
1	COMPRESSOR	FR8.5G	450891-01	1	1	1	
2	STEEL PIN	-	452255-01	4	4	4	
3	CLIP	-	452256-01	4	4	4	
4	CLAMP (B) - CONDENSER	G.S	4H0622-01	4	4	4	
5	BRACKET - CONDENSER	G.S	4H5731-01	2	2	2	
6	DRIER	DY-15QHD-9	458772-01	1	1	1	
7	TIE	T30RSF	436156-01	1	1	1	
8	HOT GAS SOLENOID VALVE	AMS-24B10HD-1	418866-02	1	1	1	
9	BRACKET - HOT GAS VALVE	G.S	4H5186-01	1	1	1	
10	WATER REGULATOR	WV11-33MHD-6	448082-01	1	1	1	
11	BRACKET - WATER REGULATOR	G.S	4X5632-01	1	1	1	
12	PRESSURE SWITCH	SAP-15-HD	425648-02	1	1	1	
13	BRACKET - PRESSURE SWITCH	ABS	425506-01	1	1	1	
14	-	-	-				
15	-	-	-				
16	-	-	-				
17	-	-	-				
18	-	-	-				
19	-	-	-				
20	EVAPORATOR	(IM-45WLE)	3H5611G02	1	1	1	
	EVAPORATOR	(IM-45WLE-25)	3H3941G01	1	1	1	
21	EXPANSION VALVE	FSE-3QHD-1	448190-01	1	1	1	
22	WASHER	-	450894-01	4	4	4	
23	COPPER TUBE (A)	COPPER	4X4452-01	1	1	1	
24	TEE	COPPER	420041-02	1	1	1	
25	COPPER TUBE (B)	COPPER	4H5725-01	1	1	1	
26	COPPER TUBE (C)	COPPER	4H5725-02	1	1	1	
27	TEE	COPPER	417394-01	1	1	1	
28	COPPER TUBE (D)	COPPER	4X4455G01	1	1	1	
29	COPPER TUBE (E) - HOT GAS	COPPER	3H3921G01	1	1	1	
30	COPPER TUBE (G) - HOT GAS	COPPER	3H3923G01	1	1	1	
31	HEAT EXCHANGER	-	3H3927G01	1	1	1	
32	COPPER TUBE (F)	COPPER	3X0072G01	1	1	1	
33	PIPE (A) - WATER SUPPLY	COPPER	3H3920G01	1	1	1	

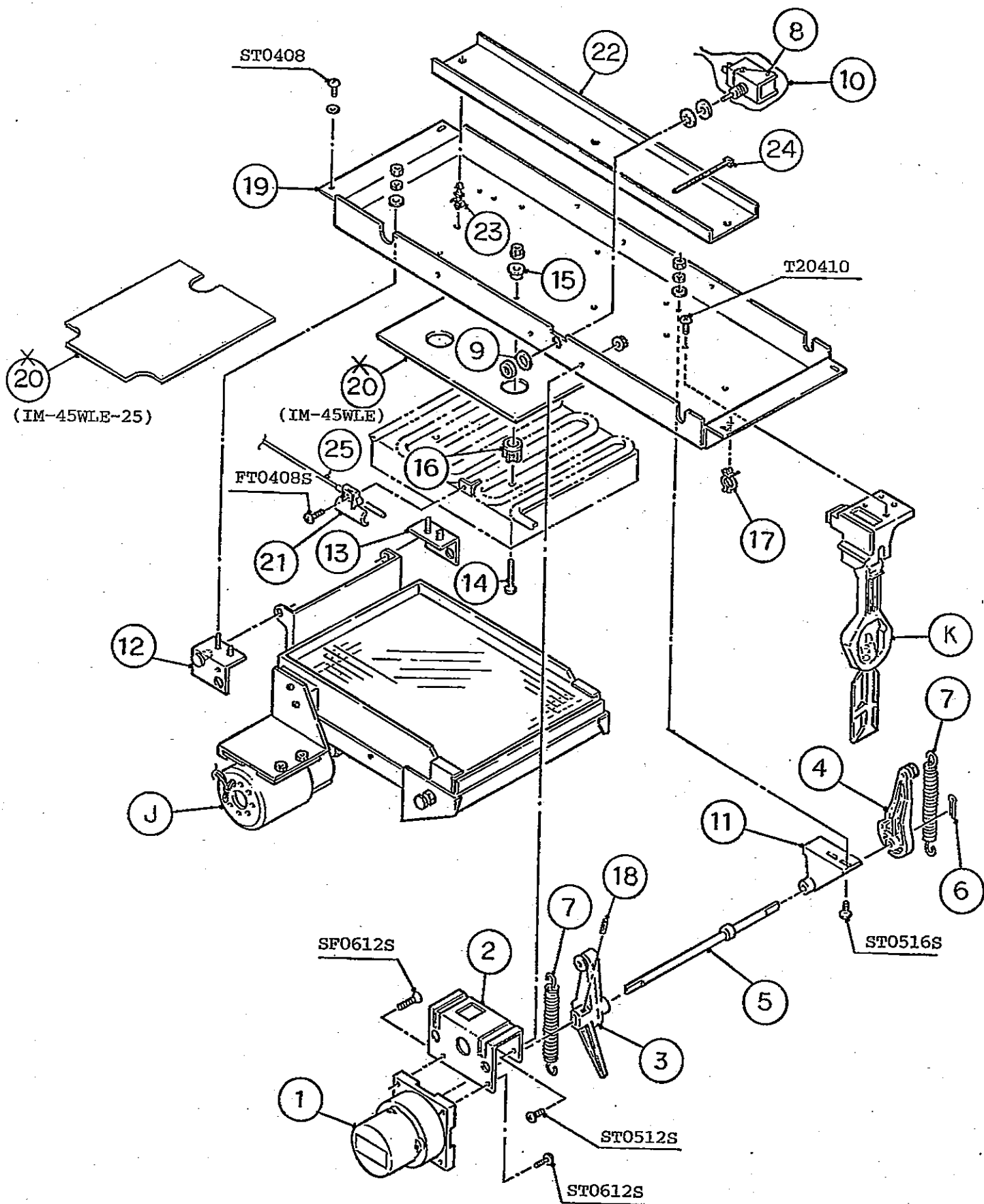
HE, GENERAL, OCEANIA, KOREA

MODEL : IM-45WLE, IM-45WLE-25 TITLE : B. REFRIGERATION CIRCUIT							
INDEX NO.	DESCRIPTION	MATERIAL OR MODEL NUMBER	PART NUMBER	REQ'D NUMBER			
				G-1 H-0	H-1,J-0 K-0	K-1,A-0 B-0,C-0	C-1 D-0
34	PIPE (B) - WATER SUPPLY	COPPER	4H5795G01	1	1	1	1
35	PIPE (C) - WATER SUPPLY	COPPER	4H5796-01	1	1	1	1
36	PROCESS TUBE (A)	COPPER	4X3620-01	1	1	1	1
37	PROCESS TUBE (B)	COPPER	4X4435-01	1	1	1	1
38	TEE	-	420335-01	1	1	1	1
39	BASE	PAINTED STEEL	3X0393G02	1	1	1	1
40	COVER (A) - EXPANSION VALVE	PE	4H9239-01	1	1	1	1
41	COVER (B) - EXPANSION VALVE	PE	4H9239-02	1	1	1	1
42	TRANSFORMER	230V / 100V	450104-01	1	1	x	
43	BASE - TRANSFORMER	ABS	4X4432-01	1	1	x	
44	CONDENSER	(S-0700)	2H1443G01	1	1	1	1
45	TIE	CV-100	7920-0002	REQ'D	REQ'D	REQ'D	REQ'D
46	TIE	CV-150	7920-0003	REQ'D	REQ'D	REQ'D	REQ'D
47	INSULATION	PE	4X5296-01	1	1	1	1
48	INSULATION TUBE (A)	Φ25xΦ35,L=130	4X8643-01	1	1	1	1
49	INSULATION TUBE (B)	7762-1020,L=250	1H1581-59	1	1	1	1
50	STARTING RELAY	117U6015	450893-01	1	1	1	1
51	STARTING CAPACITOR	117U5015	450898-01	1	1	1	1
52	CORD RELIEF	103N1006	450899-01	1	1	1	1
53	COVER	103N2010	450896-01	1	1	1	1
54	RUBBER GROMMET		450897-01	4	4	4	4

IM-45WLE, 45WLE-25

C. ICEMAKING MECHANISM ASSY

(D-2) (E-0) (E-1) ~
(C-0) (C-1) (D-0) (D-1)
(K-0) (K-1) (A-0) (B-0)
(G-1) (H-0) (H-1) (J-0)

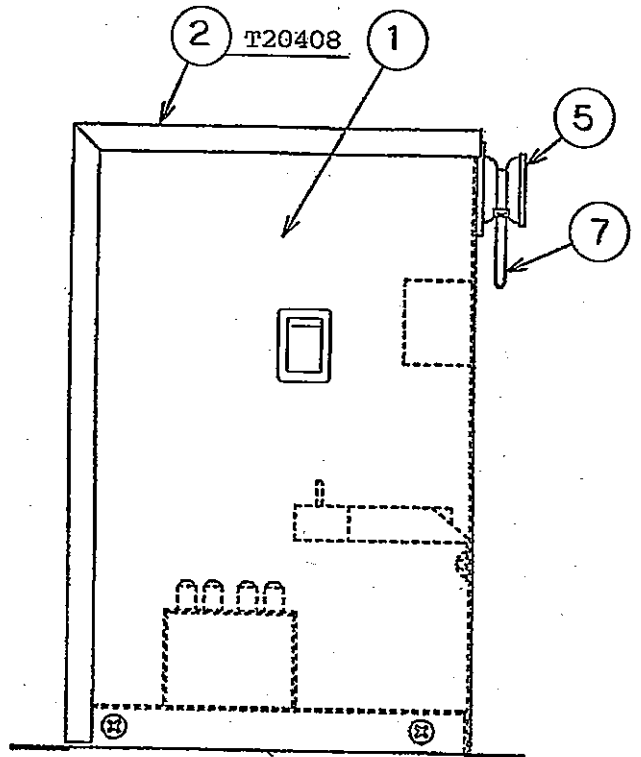
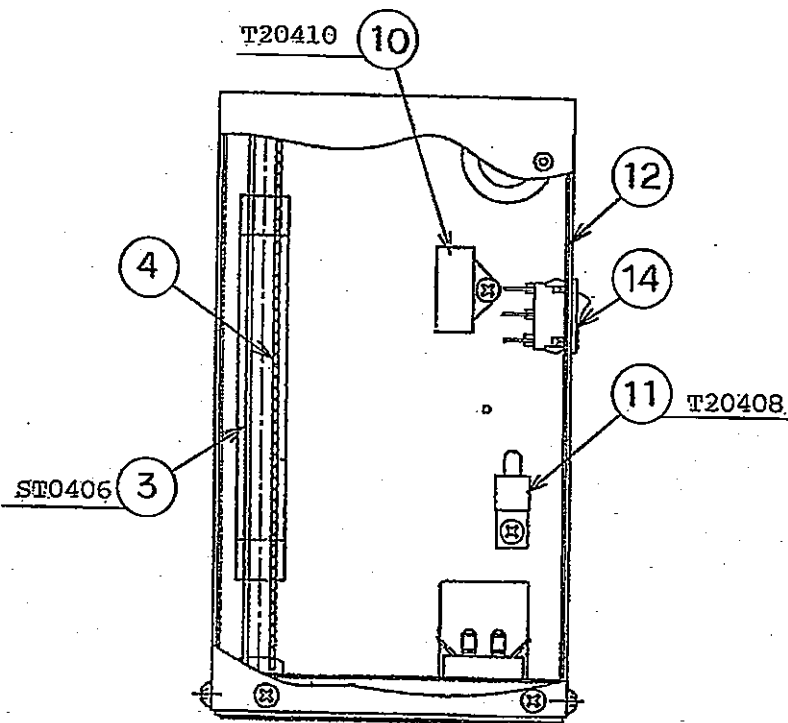
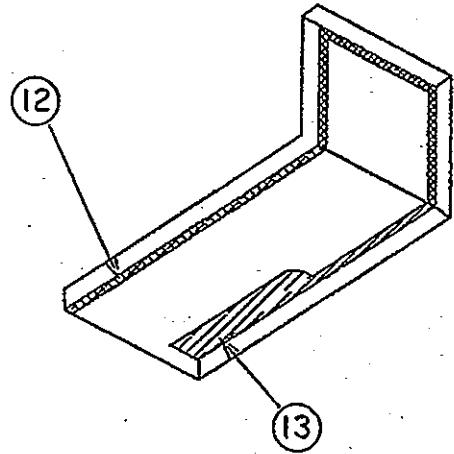
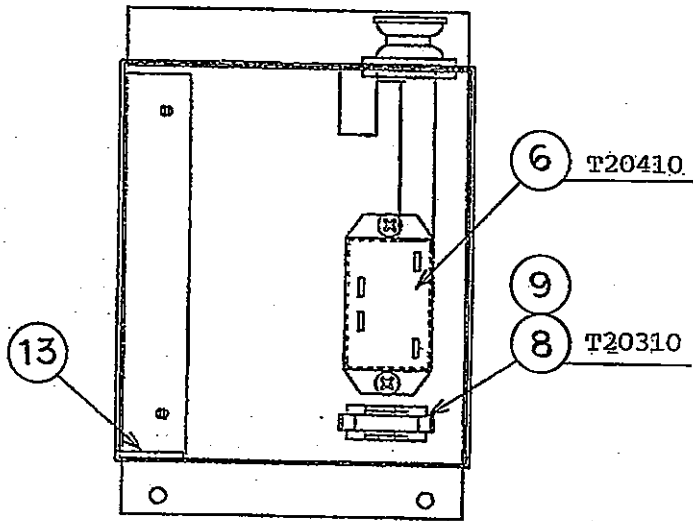


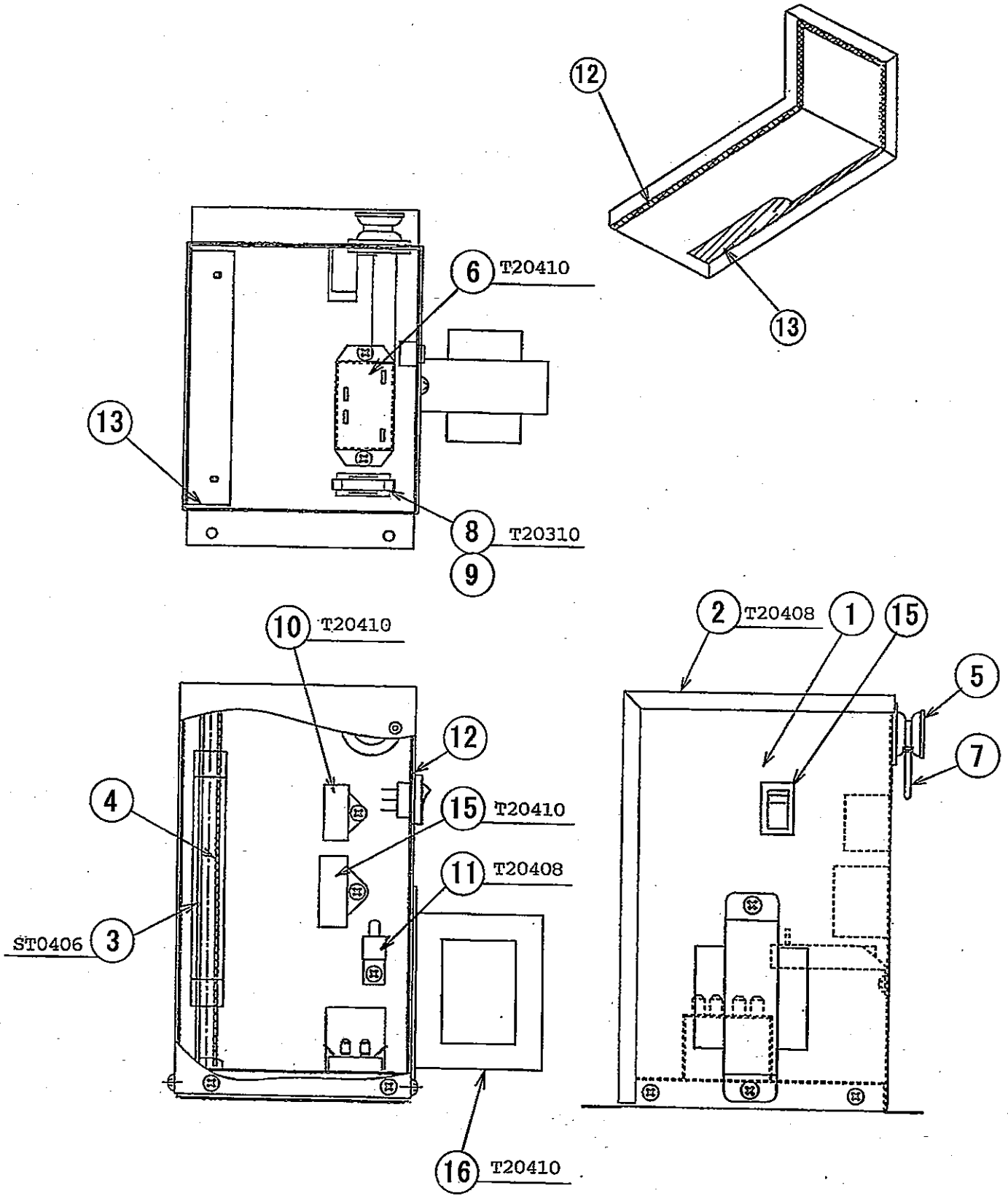
HE, GENERAL, OCEANIA, KOREA

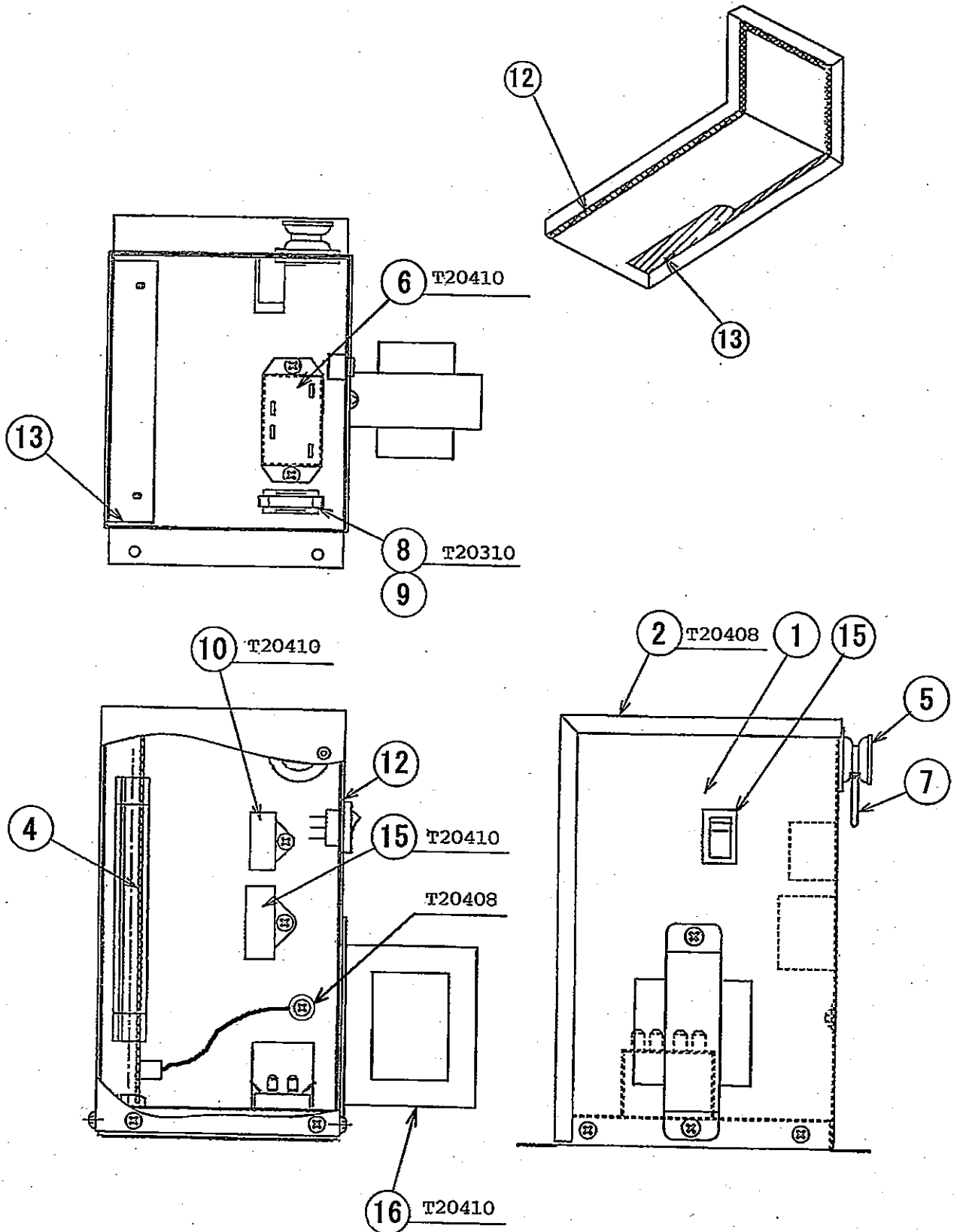
MODEL : IM-45WLE, IM-45WLE-25 TITLE : C. ICEMAKING MECHANISM ASSY							
INDEX NO.	DESCRIPTION	MATERIAL OR MODEL NUMBER	PART NUMBER	REQ'D NUMBER			
				G-1 H-0	H-1,J-0 K-0	K-1,A-0 B-0,C-0	C-1 D-0
J	WATER PAN ASSY	(IM-45WLE)	2H1158A02	1	1	-	
			2H1158A05			1	1
	WATER PAN ASSY	(IM-45WLE-25)	-	1	1	1	1
K	BIN SWITCH ASSY	(S-0817)	3H1537A02	1	1	1	1
1	ACTUATOR MOTOR	SR486A43-12	457880-01	1	1	1	1
2	BRACKET - ACTUATOR MOTOR	G.S	3H1388-01	1	1	1	1
3	CAM (A)	AC	2H0659-01	1	1	1	1
4	CAM (B)	AC	3H1389-01	1	1	1	1
5	CAM SHAFT	S.S	4H2589G01	1	1	1	1
6	SPLIT PIN	S.S, 2x12	711S-0212	1	1	1	1
7	SPRING	S.S	4H2640-01	2	2	2	2
8	TOGGLE SWITCH	VAT4-71	431977-01	1	1	1	1
9	WASHER - TOGGLE SWITCH	S.S	406196-01	1	1	1	1
10	SWITCH COVER	PE	408163-01	1	1	1	1
11	CAM SHAFT HOLDER	-	307256-01	1	1	1	1
12	HANGER BRACKET (FRONT) - WATER PAN	-	4H2591G01	1	1	1	1
13	HANGER BRACKET (REAR) - WATER PAN	-	4H2592G01	1	1	1	1
14	SCREW - EVAPORATOR MOUNTING	(IM-45WLE)	4H2593-01	4	4	4	4
	SCREW - EVAPORATOR MOUNTING	(IM-45WLE-25)	4X6095-01	4	4	4	4
15	WASHER	AC	4H0777-01	4	4	4	4
16	SPACER	(IM-45WLE)	4H0471-01	4	4	4	4
	SPACER	(IM-45WLE-25)	4X5342-01	4	4	4	4
17	CLAMP	No. 2674	427902-02	1	1	1	1
18	SPRING PIN	S.S, 3x22	712S-0322	1	1	1	1
19	BRACKET - ICEMAKING MECHANISM	(IM-45WLE)	3H9592-01	1	1	1	1
	BRACKET - ICEMAKING MECHANISM	(IM-45WLE-25)	3H9650-01	1	1	1	1
20	INSULATION - ICEMAKING MECHANISM BRACKET	(IM-45WLE)	4H1153-01	1	1	x	
	INSULATION - ICEMAKING MECHANISM BRACKET	(IM-45WLE-25)	4H1467-01	1	1	x	
21	HOLDER - THERMISTOR	PE	3H9642-01	1	1	1	1
22	GUIDE - CONNECTOR	G.S	4H5618-01	1	1	1	1
23	BOARD SUPPORT	KGLS-4S	414929-02	3	3	3	3
24	TIE	CV-100	7920-0002	2	2	2	2
25	THERMISTOR	NBFC-36-AH1-3	462976-03	1	1	1	1

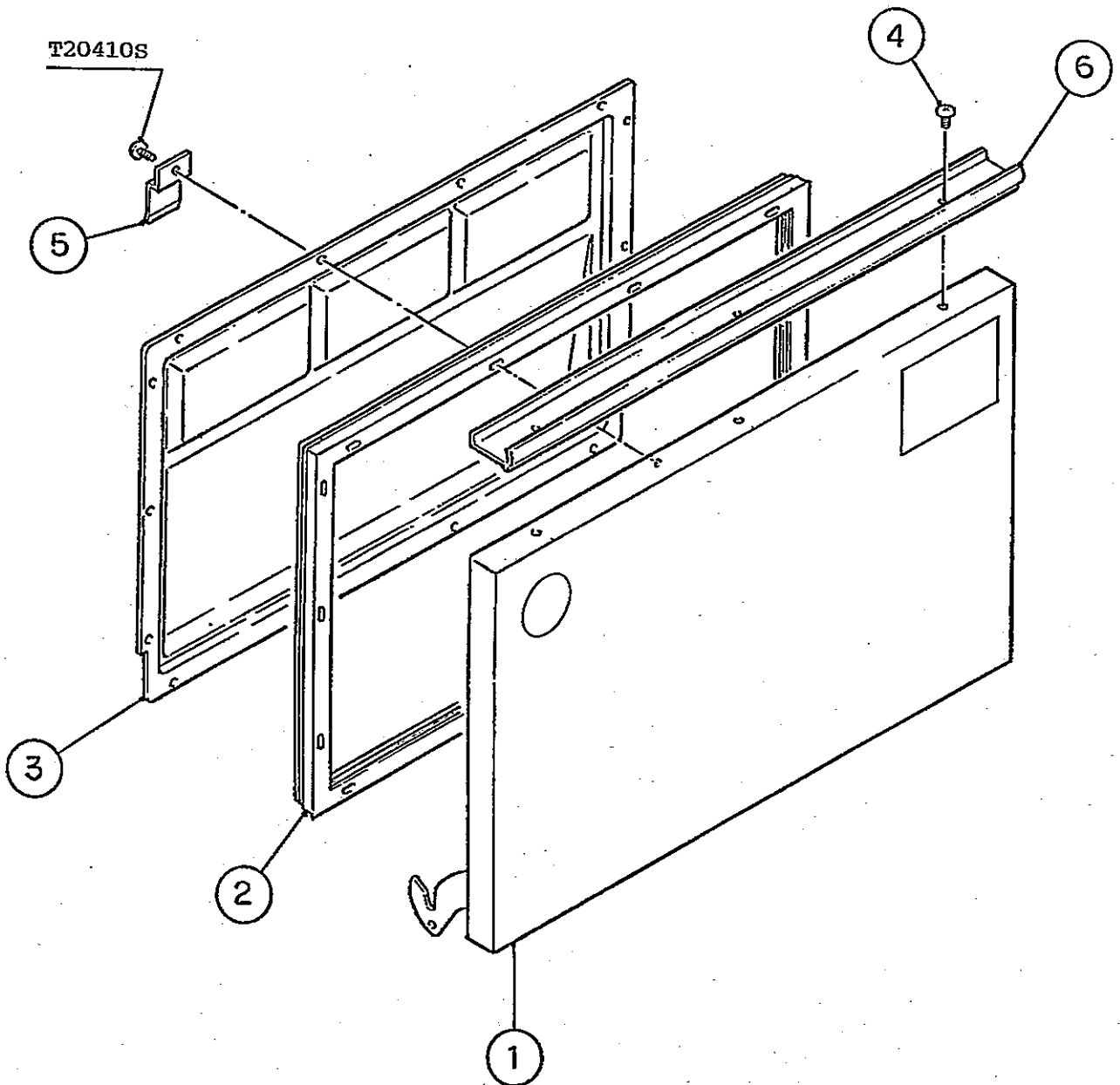
HE, GENERAL, OCEANIA, KOREA

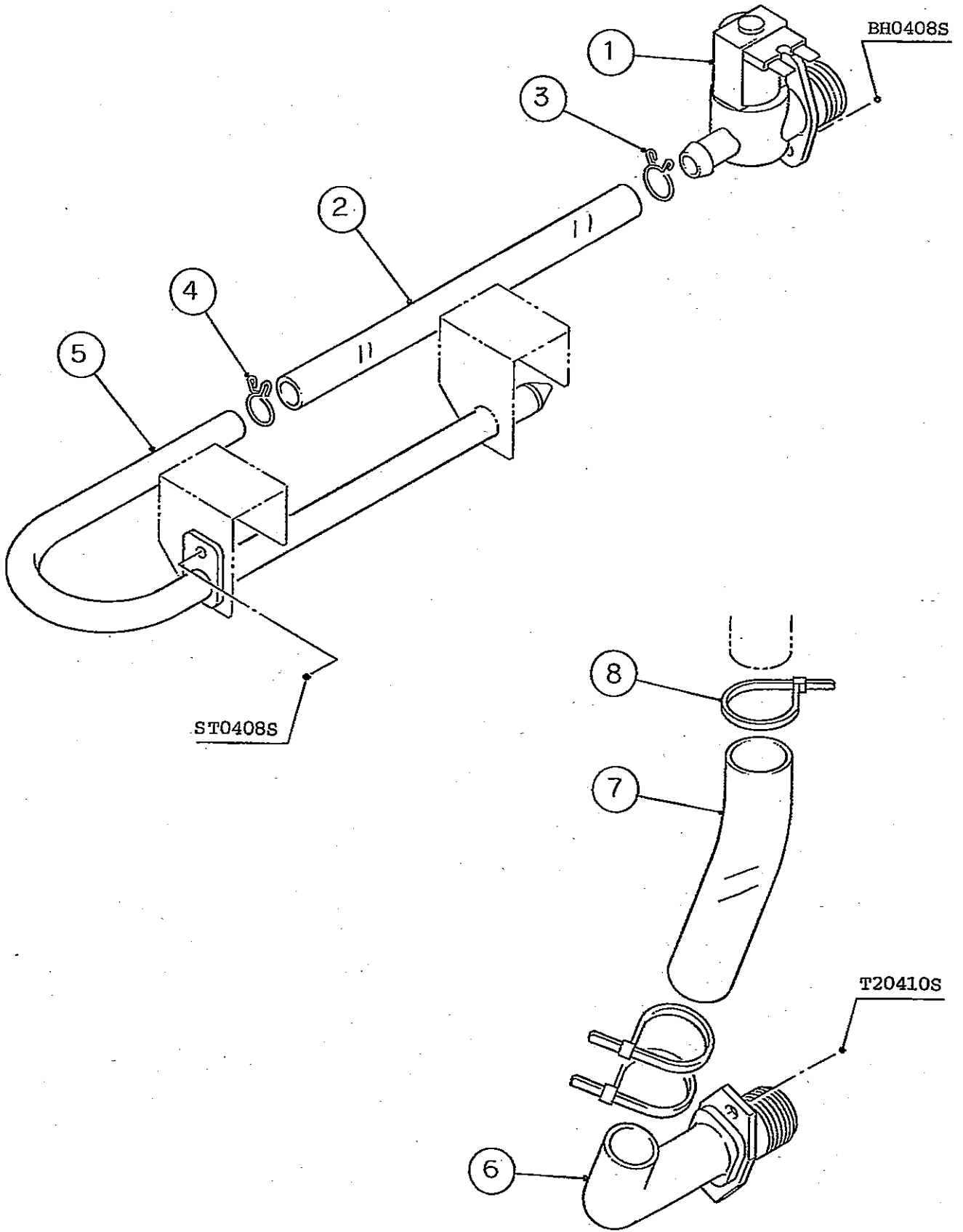
MODEL : IM-45WLE, IM-45WLE-25 TITLE : C. ICEMAKING MECHANISM ASSY							
INDEX NO.	DESCRIPTION	MATERIAL OR MODEL NUMBER	PART NUMBER	REQ'D NUMBER			
				D-1	D-2 E-0	E-1	
J	WATER PAN ASSY	(IM-45WLE)	-				
	WATER PAN ASSY	(IM-45WLE-25)	2H1158A05	1	1	1	
K	BIN SWITCH ASSY	(S-0817)	3H1537A02	1	1	1	
1	ACTUATOR MOTOR	SR486A43-12	457880-01	1	1	1	
2	BRACKET - ACTUATOR MOTOR	G.S	3H1388-01	1	1	1	
3	CAM (A)	AC	2H0659-01	1	1	1	
4	CAM (B)	AC	3H1389-01	1	1	1	
5	CAM SHAFT	S.S	4H2589G01	1	1	1	
6	SPLIT PIN	S.S, 2x12	711S-0212	1	1	1	
7	SPRING	S.S	4H2640-01	2	2	2	
8	TOGGLE SWITCH	VAT4-71	431977-01	1	1	1	
9	WASHER - TOGGLE SWITCH	S.S	406196-01	1	1	1	
10	SWITCH COVER	PE	408163-01	1	1	1	
11	CAM SHAFT HOLDER	-	307256-01	1	1	1	
12	HANGER BRACKET (FRONT) - WATER PAN	-	4H2591G01	1	1	1	
13	HANGER BRACKET (REAR) - WATER PAN	-	4H2592G01	1	1	1	
14	SCREW - EVAPORATOR MOUNTING	(IM-45WLE)	4H2593-01	4	4	4	
	SCREW - EVAPORATOR MOUNTING	(IM-45WLE-25)	4X6095-01	4	4	4	
15	WASHER	AC	4H0777-01	4	4	4	
16	SPACER	(IM-45WLE)	4H0471-01	4	4	4	
	SPACER	(IM-45WLE-25)	4X5342-01	4	4	4	
17	CLAMP	No. 2674	427902-02	1	1	1	
18	SPRING PIN	S.S, 3x22	712S-0322	1	1	1	
19	BRACKET - ICEMAKING MECHANISM	(IM-45WLE)	3H9592-01	1	1	1	
	BRACKET - ICEMAKING MECHANISM	(IM-45WLE-25)	3H9650-01	1	1	1	
20	-	-	-				
	-	-	-				
21	HOLDER - THERMISTOR	PE	3H9642-01	1	1	1	
22	GUIDE - CONNECTOR	G.S	4H5618-01	1	1	1	
23	BOARD SUPPORT	KGLS-4S	414929-02	3	3	3	
24	TIE	CV-100	7920-0002	2	2	2	
25	THERMISTOR	NBFC-36-AH1-3	462976-03	1	1	1	

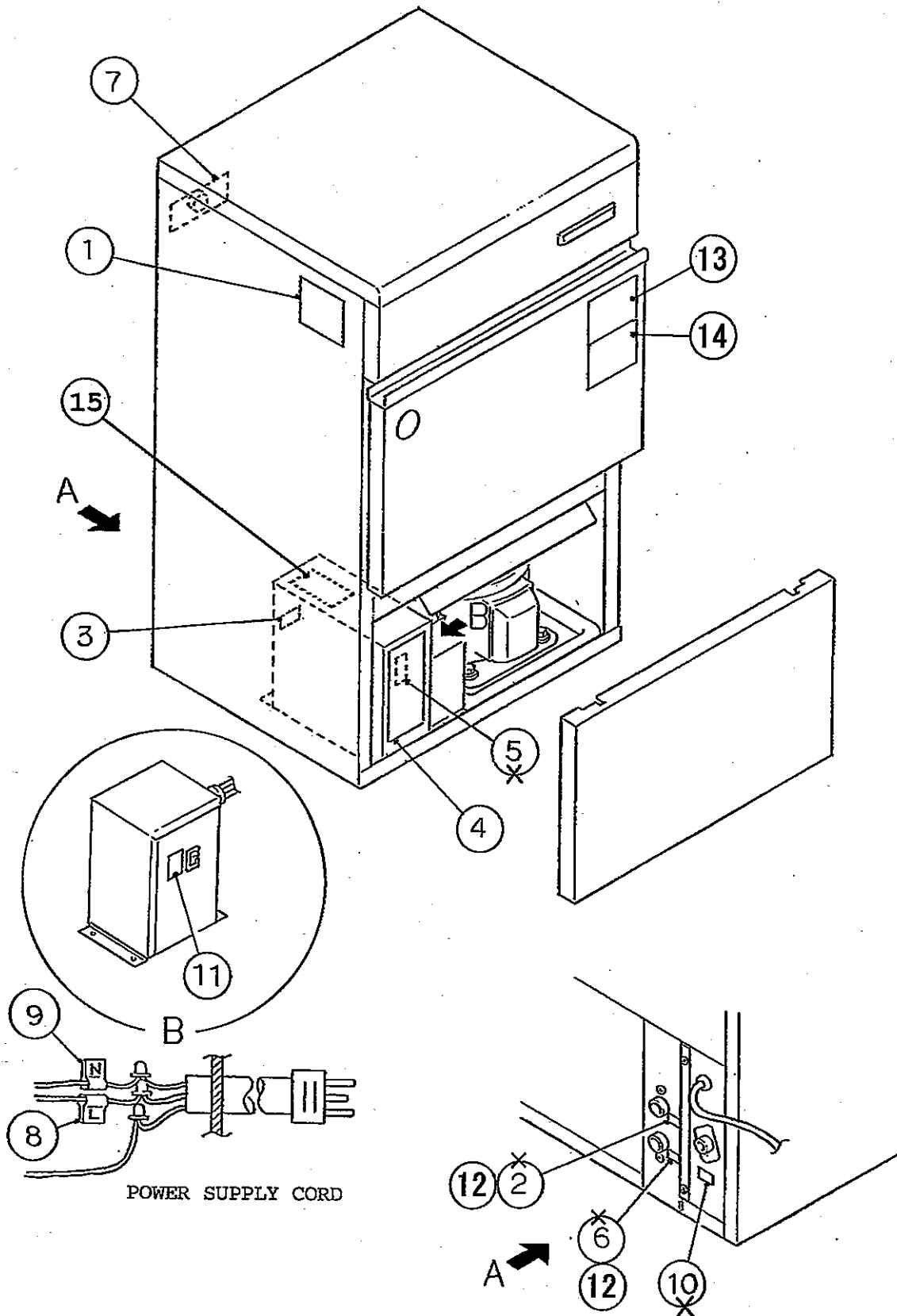










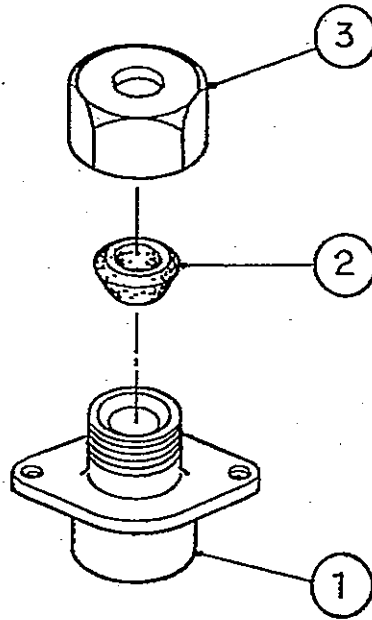


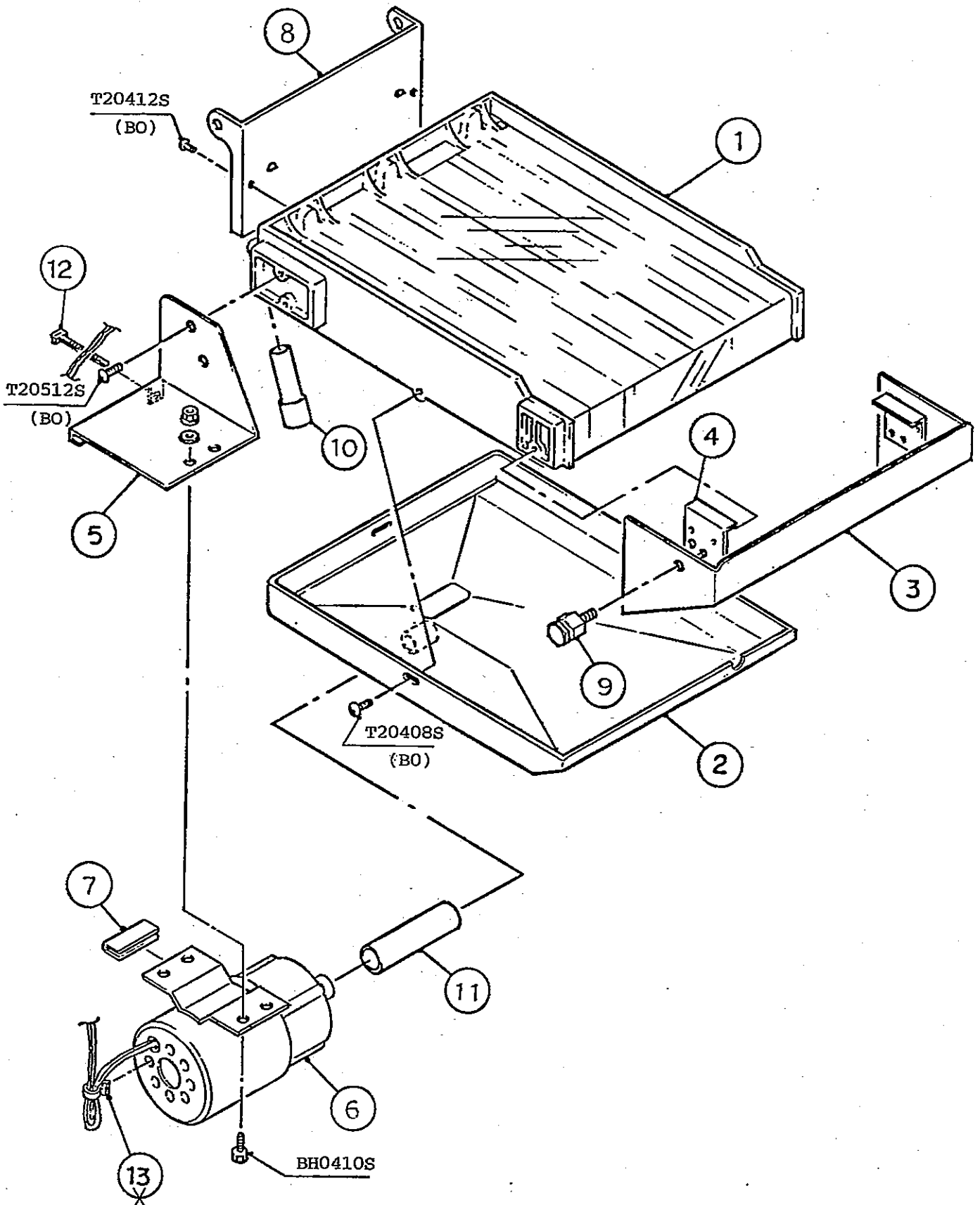
(S-0867)

(D-2) (E-0) (E-1) ~
(C-0) (C-1) (D-0) (D-1)
(K-0) (K-1) (A-0) (B-0)
(G-1) (H-0) (H-1) (J-0)

IM-45WLE, 45WLE-25

H. FITTING (P) ASSY

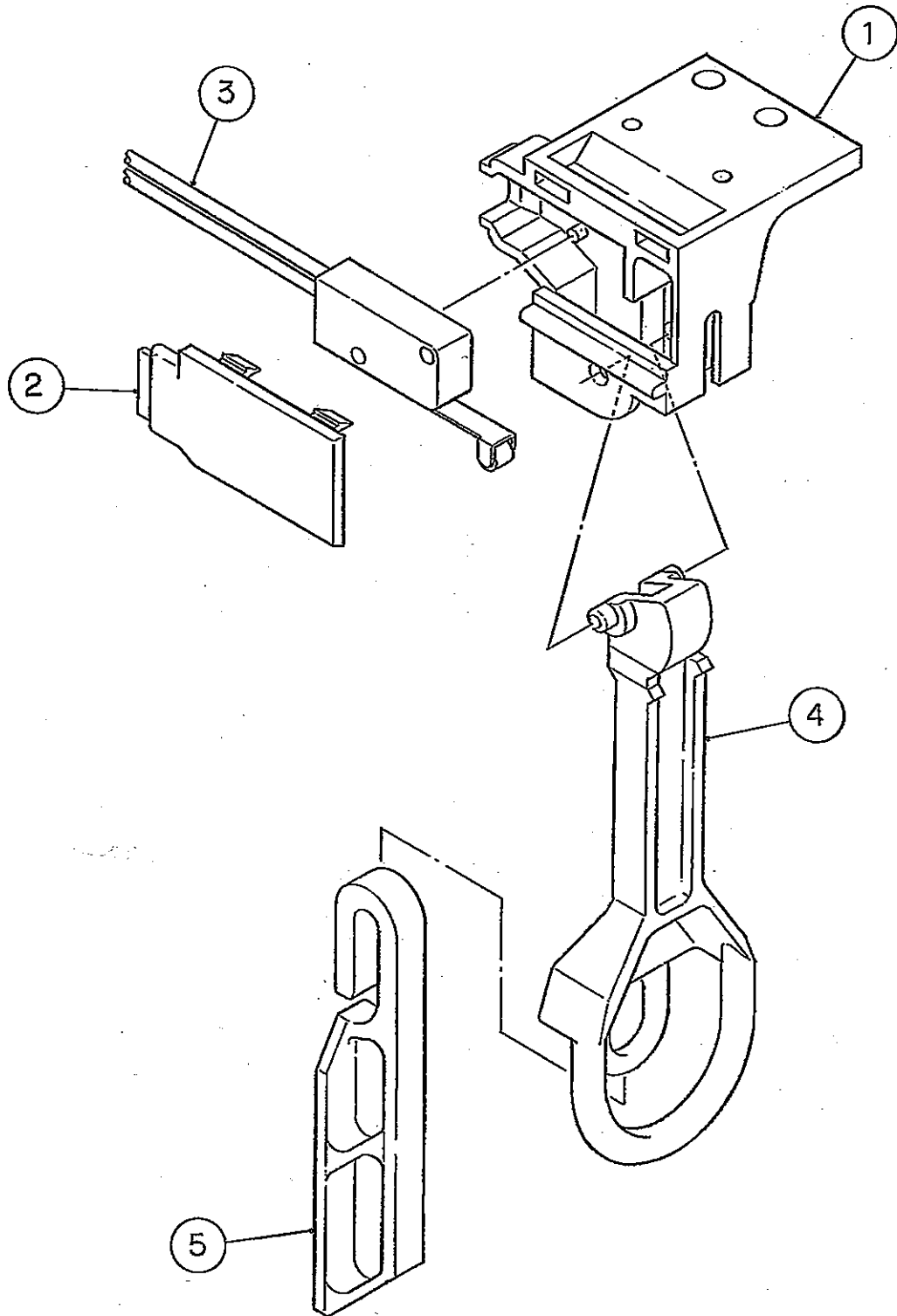


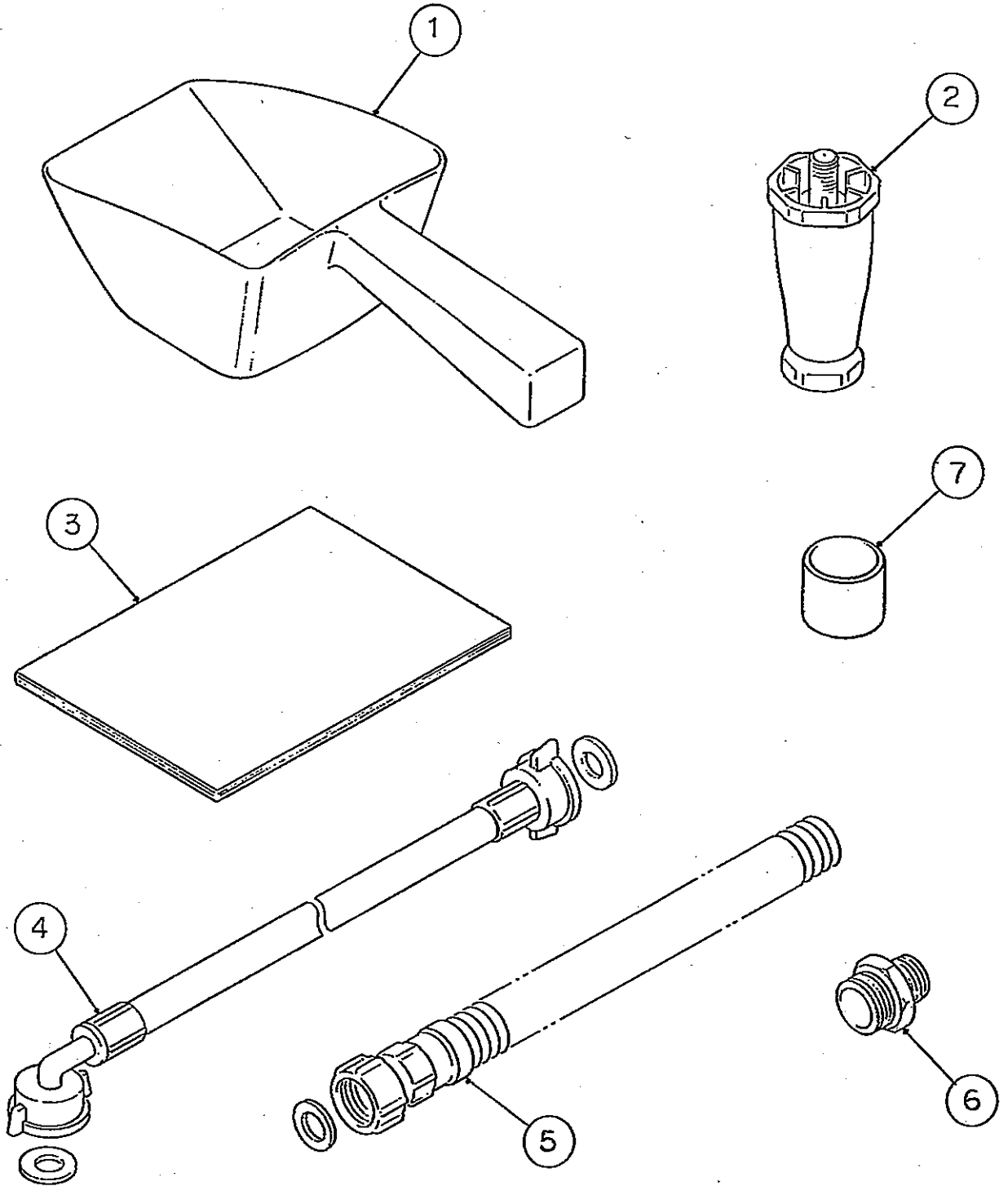


(D-2) (E-0) (E-1) ~
(C-0) (C-1) (D-0) (D-1)
(K-0) (K-1) (A-0) (B-0)
(G-1) (H-0) (H-1) (J-0)

IM-45WLE, 45WLE-25

K. BIN SWITCH ASSY





HE, GENERAL, OCEANIA, KOREA

MODEL : IM-45WLE, IM-45WLE-25 TITLE : L. ACCESSORIES							
INDEX NO.	DESCRIPTION	MATERIAL OR MODEL NUMBER	PART NUMBER	REQ'D NUMBER			
				D-1	D-2 E-0	E-1	
1	SCOOP	AC	2H0361-01	1	1	1	
2	LEG	(HE ONLY)	462576-01	4	4	4	
3	INSTRUCTION MANUAL	-	-				
		-	-				
		PAPER	91E1AX20B	1	1	-	
		PAPER	91E1AX20F			1	
4	INLET HOSE	-	450722-01	2	2	2	
5	OUTLET HOSE	-	450723-02	2	2	2	
6	ADAPTER	-	450724-01	2	2	2	
7	CAP	PE	417323-01	1	1	1	