



First Choice Group

SPARE PARTS DIAGRAM FOR



Oven Range
G1006FX
Twin Bullseye

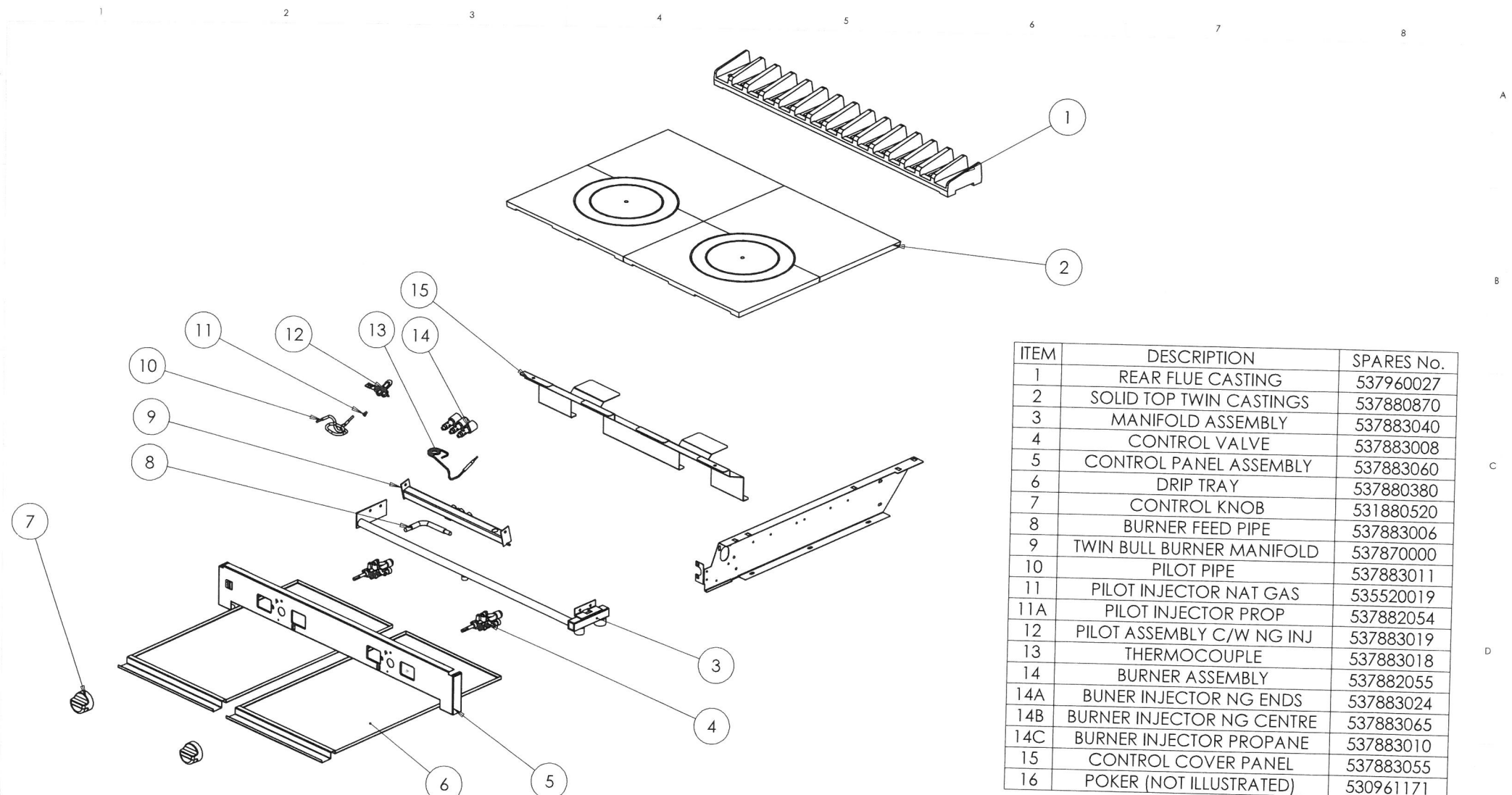


First Choice Group
Blakeney Way, Kingswood Lakeside
Cannock, Staffs, WS11 8LD
TEL: 01543 577778 FAX: 01543504141
Email: enquires@firstchoice-cs.co.uk
Web: www.firstchoice-cs.co.uk



G1006FX TWIN BULLSEYE

Spares No	Description
537060010	Control Knob
537883008	Gas Control
537883018	Thermocouple
537883019	Pilot Assembly (Natural Gas)
535520019	Pilot Injector (Natural Gas)
537882054	Pilot Injector (Propane Gas)
537882055	Burner Assembly (w/ Inj.) (Nat. Gas)
537883024	Burner Injector (Natural Gas)
537883010	Burner Injector (Propane Gas)



ITEM	DESCRIPTION	SPARES No.
1	REAR FLUE CASTING	537960027
2	SOLID TOP TWIN CASTINGS	537880870
3	MANIFOLD ASSEMBLY	537883040
4	CONTROL VALVE	537883008
5	CONTROL PANEL ASSEMBLY	537883060
6	DRIP TRAY	537880380
7	CONTROL KNOB	531880520
8	BURNER FEED PIPE	537883006
9	TWIN BULL BURNER MANIFOLD	537870000
10	PILOT PIPE	537883011
11	PILOT INJECTOR NAT GAS	535520019
11A	PILOT INJECTOR PROP	537882054
12	PILOT ASSEMBLY C/W NG INJ	537883019
13	THERMOCOUPLE	537883018
14	BURNER ASSEMBLY	537882055
14A	BUNER INJECTOR NG ENDS	537883024
14B	BURNER INJECTOR NG CENTRE	537883065
14C	BURNER INJECTOR PROPANE	537883010
15	CONTROL COVER PANEL	537883055
16	POKER (NOT ILLUSTRATED)	530961171

PRODUCTION ISSUE

ISSUE MOD No ALTERATION DRAWN BY DATE

A 7922 PRODUCTION ISSUE F.GARVOCK 08/08/17

IF IN DOUBT ASK
DO NOT SCALE
FIRST ANGLE PROJECTION

UNLESS OTHERWISE SPECIFIED:
DIMENSIONS ARE IN MILLIMETERS
TOLERANCES:
LINEAR: ±0.5mm
ANGULAR: ±0.5 DEG



DEBUR AND
BREAK SHARP EDGES

WEIGHT: 108342.09g

DRAWN: F.GARVOCK

DATE: 26/07/17

SCALE: 1:10

MATL:

THICKNESS:

BIN No:

PRODUCT

TITLE

DRAWING NUMBER

FINISH:

PART No:

G1006FX TWIN BULL RANGE
TWIN BULL PIEWORK

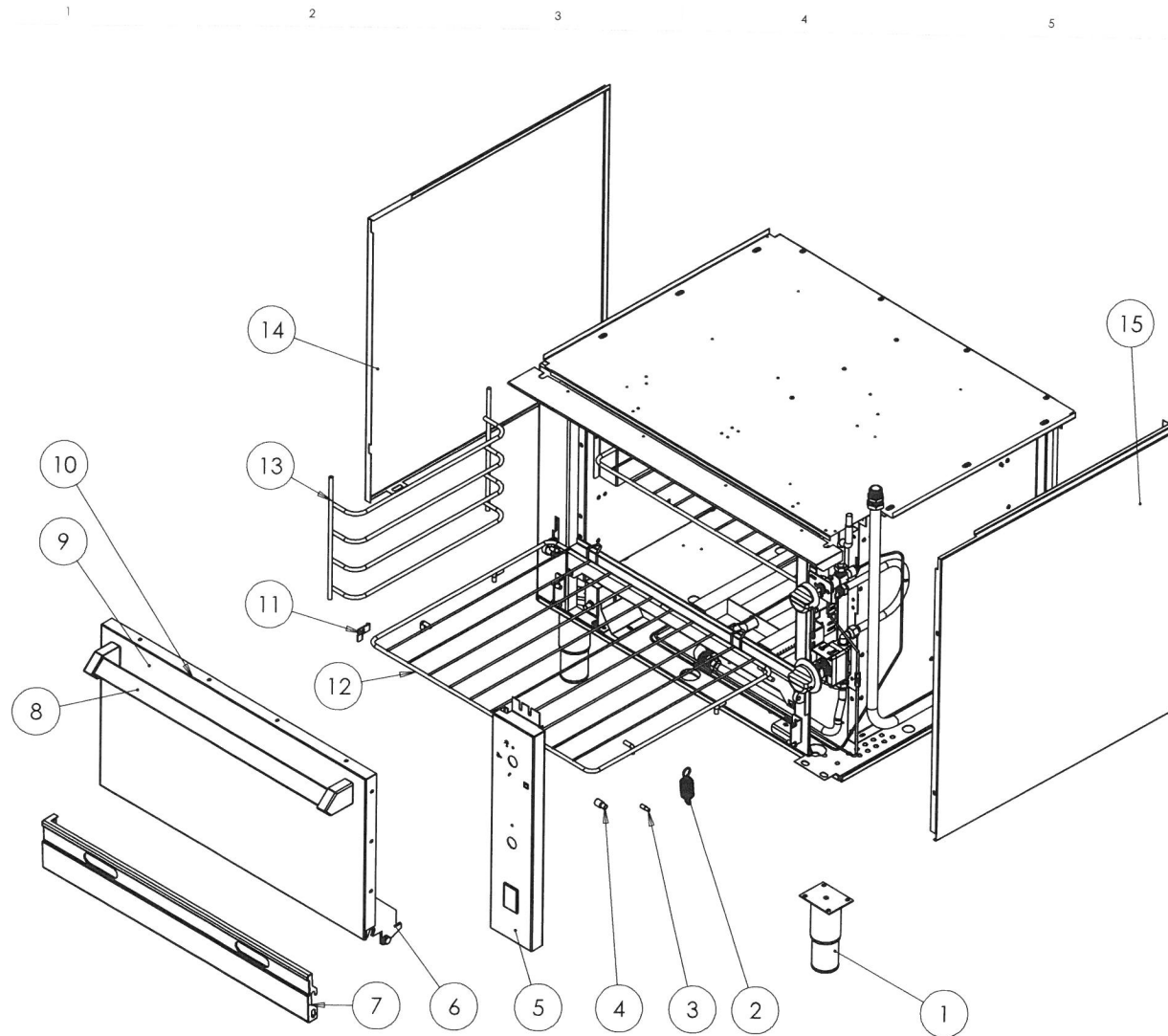
DRAWING NUMBER

ISSUE

AA54734

A F

Falcon Foodservice Equipment Wallace View Hillfoots Road Stirling Scotland



ITEM	DESCRIPTION	SPARES No.
1	ADJUSTABLE FOOT	535400670
1A	ADJUSTABLE FEET (SET OF 4)	531886613
2	DOOR SPRING	531880210
3	PIN BOTTOM PANEL LONG	531880130
4	HINGE PIN SHORT	531880230
5	CORNER POST	531880115
6	INNER DOOR FRAME	531880205
7	BOTTOM FRONT PANEL ASSEMBLY	531880240
8	DOOR HANDLE RAIL	531880170
9	OVEN DOOR COMPLETE	531880160
10	OUTER DOOR PANEL	531880200
11	HANGER BRACKET	535480066
12	OVEN SHELF	531880150
13	HANGER SUPPORT	531880450
14	LEFT HAND OUTER SIDE PANEL	531880010
15	RIGHT HAND OUTER SIDE PANEL	531880020

PRODUCTION ISSUE

ISSUE	MOD No	ALTERATION	DRAWN BY	DATE
A	7922	PRODUCTION ISSUE	F.GARVOCK	03/08/17

IF IN DOUBT ASK
DO NOT SCALE
FIRST ANGLE PROJECTION

UNLESS OTHERWISE SPECIFIED:
DIMENSIONS ARE IN MILLIMETERS
TOLERANCES:
LINEAR: ±0.5mm
ANGULAR: ±0.5 DEG



DEBUR AND
BREAK SHARP EDGES
WEIGHT: 235753.49g

DRAWN: **F.GARVOCK**

DATE: **24/07/17**

SCALE: **1:10**

MATL:

THICKNESS:

BIN No:

PRODUCT

G1006X/16X RANGE

TITLE

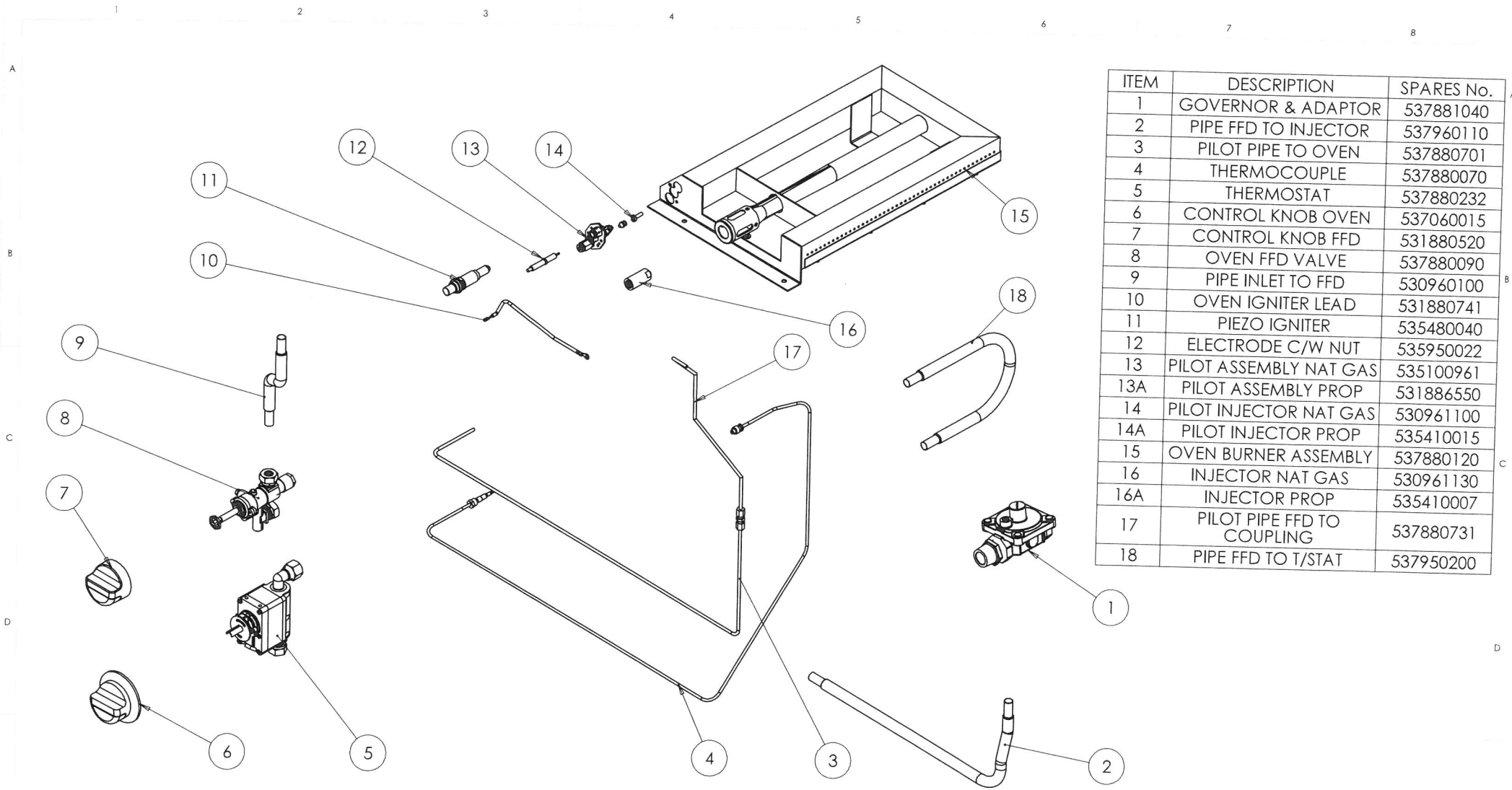
SPARES OVEN FITMENTS

DRAWING NUMBER

AA54730

ISSUE

A



ITEM	DESCRIPTION	SPARES No.
1	GOVERNOR & ADAPTOR	537881040
2	PIPE FFD TO INJECTOR	537960110
3	PILOT PIPE TO OVEN	537880701
4	THERMOCOUPLE	537880070
5	THERMOSTAT	537880232
6	CONTROL KNOB OVEN	537060015
7	CONTROL KNOB FFD	531880520
8	OVEN FFD VALVE	537880090
9	PIPE INLET TO FFD	530960100
10	OVEN IGNITER LEAD	531880741
11	PIEZO IGNITER	535480040
12	ELECTRODE C/W NUT	535950022
13	PILOT ASSEMBLY NAT GAS	535100961
13A	PILOT ASSEMBLY PROP	531886550
14	PILOT INJECTOR NAT GAS	530961100
14A	PILOT INJECTOR PROP	535410015
15	OVEN BURNER ASSEMBLY	537880120
16	INJECTOR NAT GAS	530961130
16A	INJECTOR PROP	535410007
17	PILOT PIPE FFD TO COUPLING	537880731
18	PIPE FFD TO T/STAT	537950200

PRODUCTION ISSUE

ISSUE	MOD No	ALTERATION	DRAWN BY	DATE
A	7922	PRODUCTION ISSUE	F.GARVOCK	03/08/17

IF IN DOUBT ASK
DO NOT SCALE
FIRST ANGLE PROJECTION

UNLESS OTHERWISE SPECIFIED:
DIMENSIONS ARE IN MILLIMETERS
TOLERANCES:
LINEAR: ±0.5mm
ANGULAR: ±0.5 DEG



DEBUR AND
BREAK SHARP EDGES
WEIGHT: 304454.42g

DRAWN: **F.GARVOCK**

DATE: **24/07/17**

SCALE: **1:5**

MATL:

THICKNESS:

BIN No:

PRODUCT

TITLE

FINISH:

PART No:

**G1006X/16 RANGE
SPARES OVEN PIPEWORK**

DRAWING NUMBER

AA54731

ISSUE

A

Falcon Foodservice Equipment Wallace View Hillfoots Road Stirling Scotland