



First Choice
Group

SPARE PARTS DIAGRAM FOR



HOSHIZAKI

Ice Machine
DCM-120FE

First Choice Group
Blakeney Way, Kingswood Lakeside
Cannock, Staffs, WS11 8LD
TEL: 01543 577778 FAX: 01543504141
Email: enquires@firstchoice-cs.co.uk
Web: www.firstchoice-cs.co.uk

No. 24CG-2093

ISSUED: APR. 13,2000

REVISED: NOV. 29,2007

SERVICE INFORMATION

: -



HOSHIZAKI CUBELET ICE MAKER

MODEL **DCM-120FE**

PARTS LIST (HE)

		H-1	JUL. 1998
		H-2	SEP. 1998
		J-0	DEC. 1998
		J-1	JAN. 1999
		J-2	MAR. 1999
		J-3	JUL. 1999
		J-4	JUL. 1999
		J-5	DEC. 1999
		K-1	JAN. 2000
		A-0	DEC. 2000
		A-1	MAY 2001
		B-1	NOV. 2001
		B-2	DEC. 2001
		B-3	APR. 2002
B-4	OCT. 2002		
C-1	FEB. 2003		
C-2	APR. 2003		
D-0	DEC. 2003		
E-0	DEC. 2004		
F-1	APR. 2006		
G-0	JAN. 2007		
G-1	DEC. 2007		

MATERIAL ABBREVIATIONS

ALUMINUM

AL = Aluminum

COPPER

CU = Copper

PLASTIC

ABS = Acrylonitrile -butadiene - styrene
AC = Polyacetal
EVA = Ethylene vinyl acetate
PA = Polyamide = Nylon
PC = Polycarbonate
PE = Polyethylene
PES = Polyester
PETP = Polyethylene terephthalate = Tetlon
PP = Polypropylene
PS = Polystyrene
PTFE = Polytetrafluoroethylene = Teflon
PUR = Polyurethane
PVC = Polyvinyl chloride

RUBBER

VN = Vinyl Nitrile
EPDM = EP rubber
NBR = Nitrile butadiene rubber
NR = Natural rubber
NP = Neoprene
SI.R = Silicone rubber
SY.R = Synthetic rubber
EPH = Epichlorohydrin

STEEL

GS = Galvanized steel
SS = Stainless steel
PS = Plated steel
PAS = Primed steel

AUXILIARY CODE

K-0

Designates the year. "K" indicates the year 2000. Years progress or regress in alphabetical order. "J" is 1999, "L" is 2001, "M" is 2002, and so on. The letters "I" and "O" were skipped.
Designates significant part changes within the same year. Base is 0 and this number advances for each change.

Example: P-1

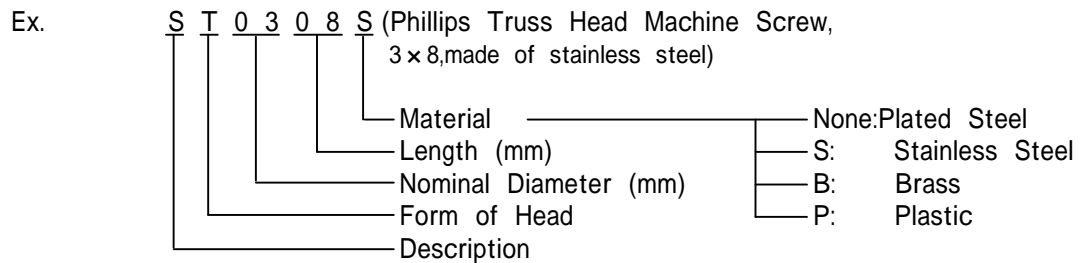
"P" indicates 2004.
"1" indicates the first significant part change for 2004.

MARKS LOCATED UNDER THE AUXILIARY CODE

- = Part deleted.
x = Part deleted and replaced by "o" part.
o = New part in place of "x" part.

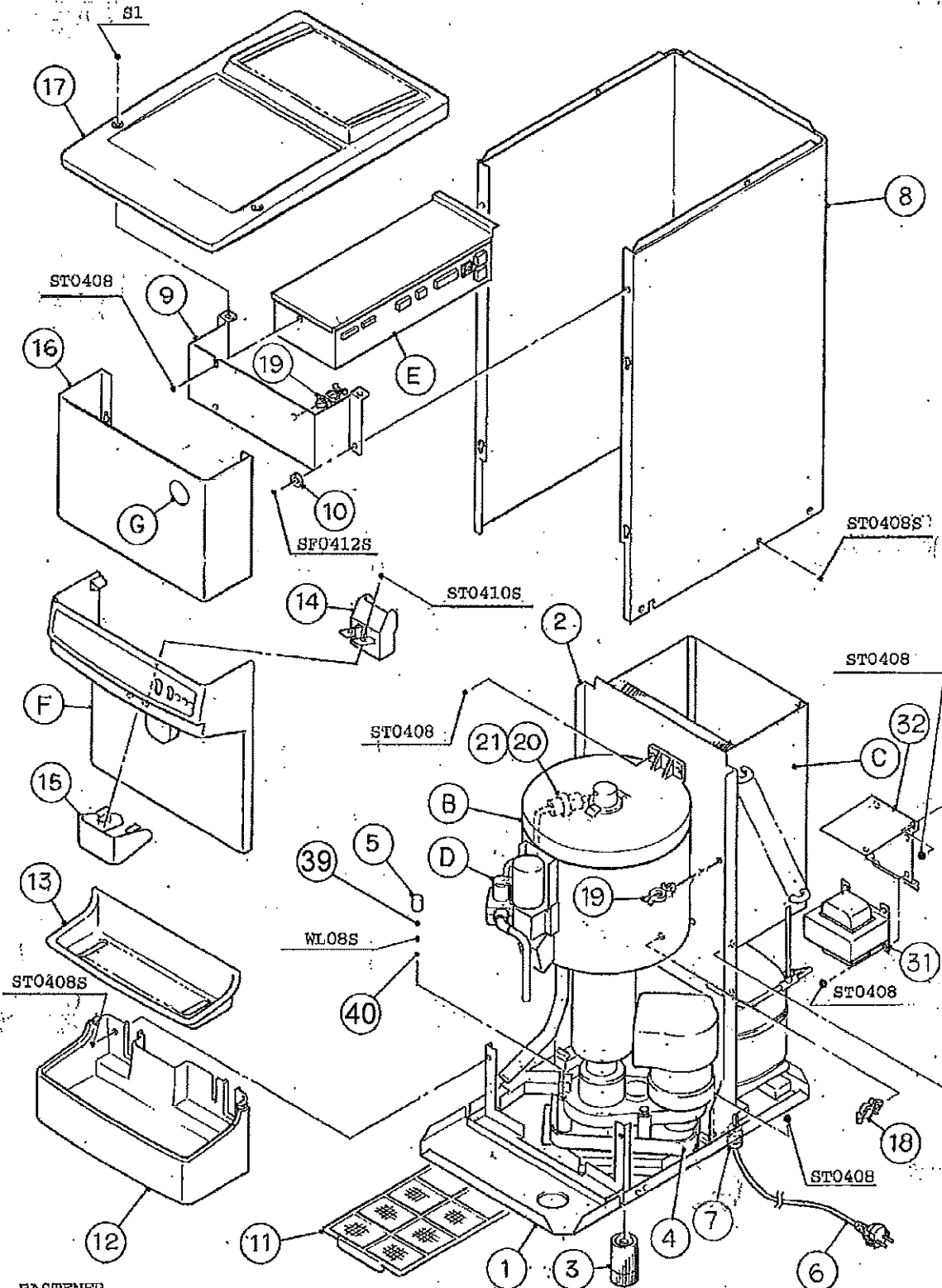
FASTENER ABBREVIATION LIST

ST	=	Phillips Truss Head Machine Screw
SP	=	Phillips Pan Head Machine Screw
SF	=	Phillips Flat Head Machine Screw
SS	=	Phillips Pan Head Machine Screw with Split Lock Washer
SW	=	Phillips Pan Head Machine Screw with Split Lock Washer and Flat Washer
T1	=	Phillips Truss Head Tapping Screw (Correspond to Type A)
T2	=	Phillips Truss Head Tapping Screw (Correspond to Type B)
T3	=	Phillips Truss Head Tapping Screw (Correspond to Type C)
FT	=	Phillips Truss Head Tapping Screw (Special)
BH	=	Hexagon Head Bolt
BC	=	Socket Head Cap Screw
BS	=	Hexagon Bolt with Split Washer
BW	=	Hexagon Bolt with Split Washer and Flat Washer
BF	=	Hexagon Flange Bolt
BR	=	Cross-Recessed Hexagon Head Bolt
BRW	=	Cross-Recessed Hexagon Head Bolt with Split Lock Washer and Flat Washer
WL	=	Split Lock Washer
WT	=	External Tooth Washer
WF	=	Flat Washer
WS	=	Spring Washer
NH	=	Hexagon Nut
NF	=	Hexagon Flange Nut
NC	=	Hexagon Cap Nut
NS	=	Square Nut
NW	=	Wing Nut



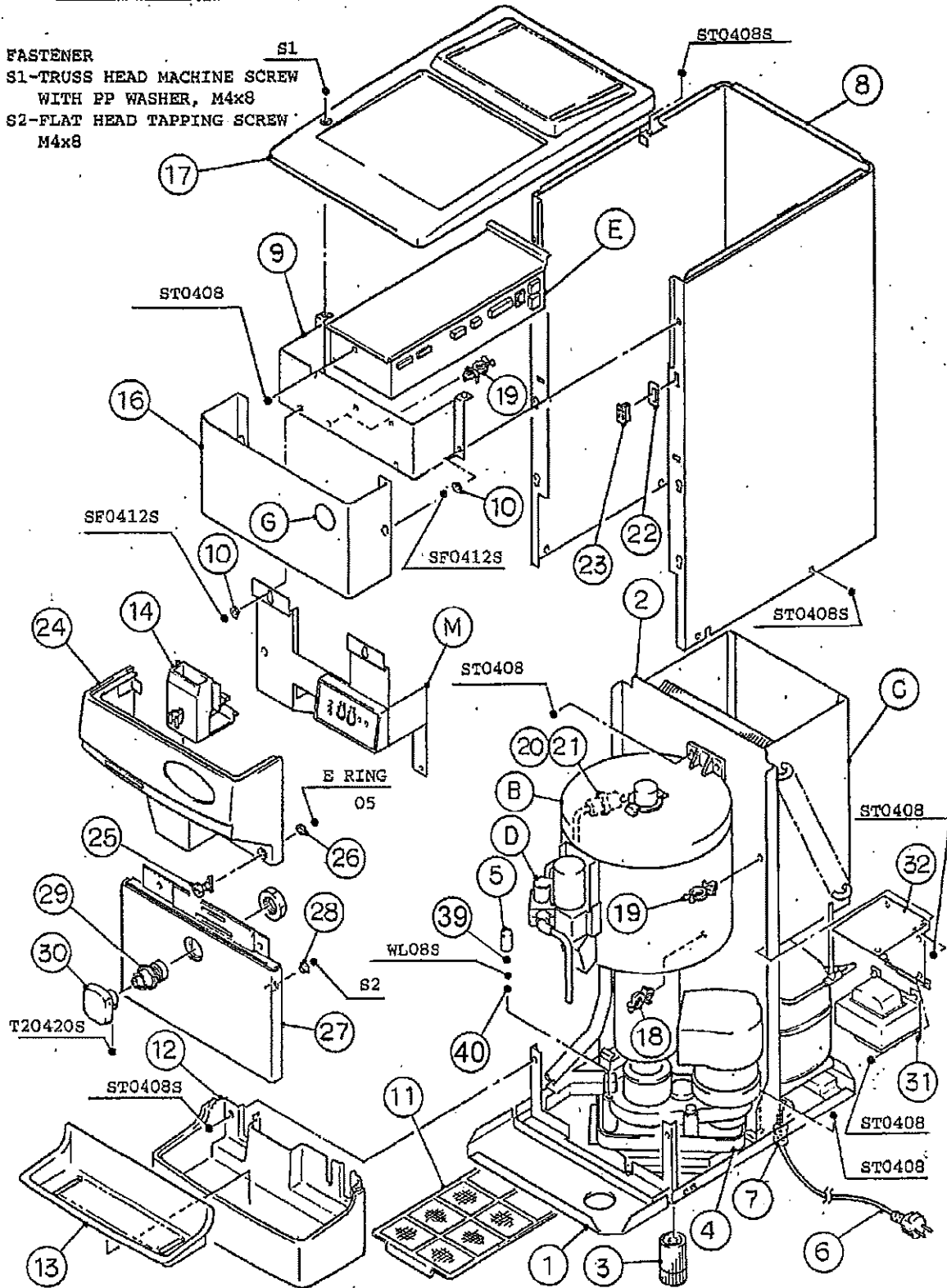
(Note) Second character is numerical except the list.
 Ex: S1,S2,B3 etc.

And abbreviations and names are shown under the illustration.



FASTENER
S1 - TRUSS HEAD MACHINE SCREW
WITH PP WASHER, M4x8

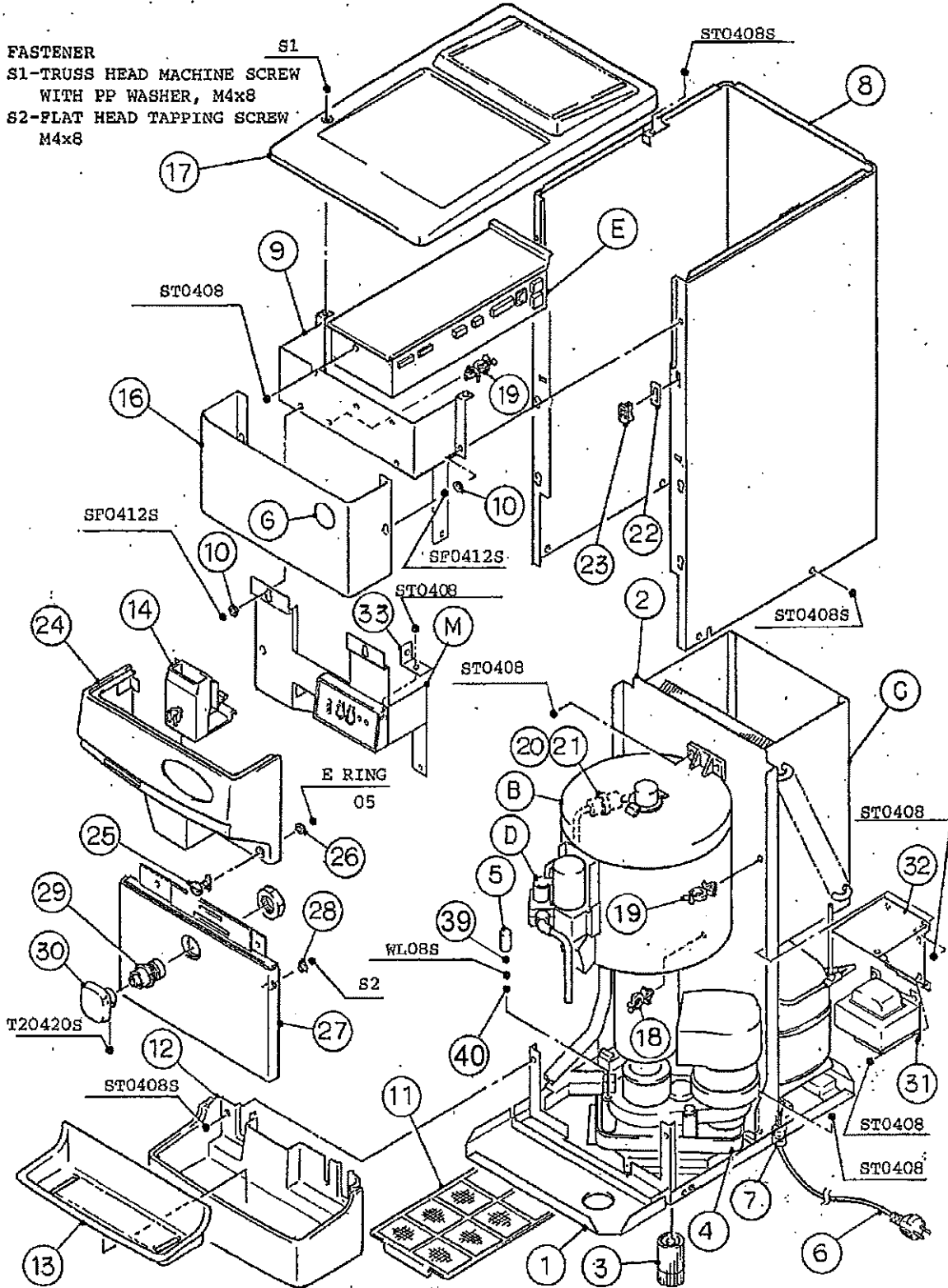
FASTENER
S1-TRUSS HEAD MACHINE SCREW
WITH PP WASHER, M4x8
S2-FLAT HEAD TAPPING SCREW
M4x8



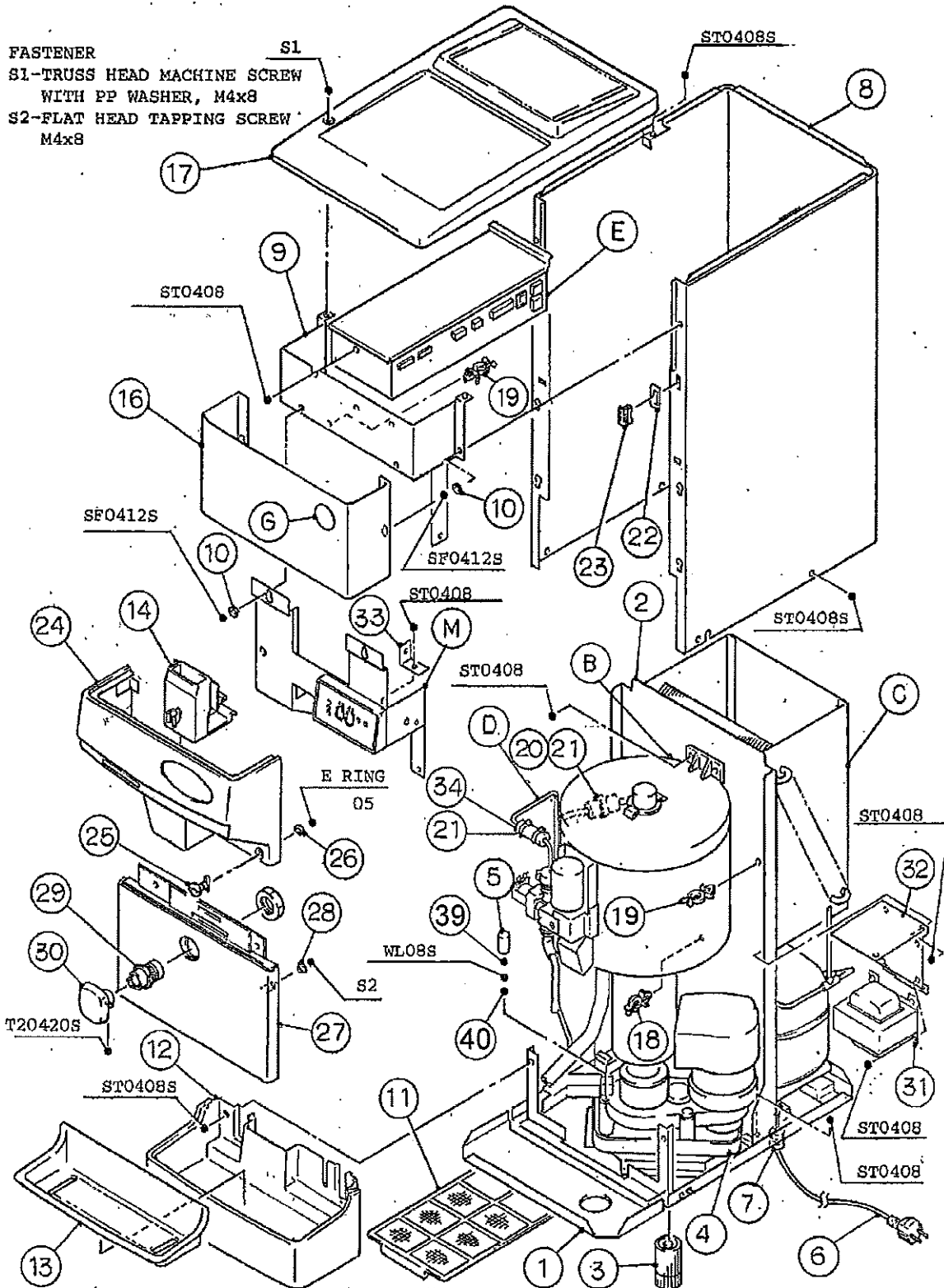
FASTENER

S1-TRUSS HEAD MACHINE SCREW
WITH PP WASHER, M4x8

S2-FLAT HEAD TAPPING SCREW
M4x8



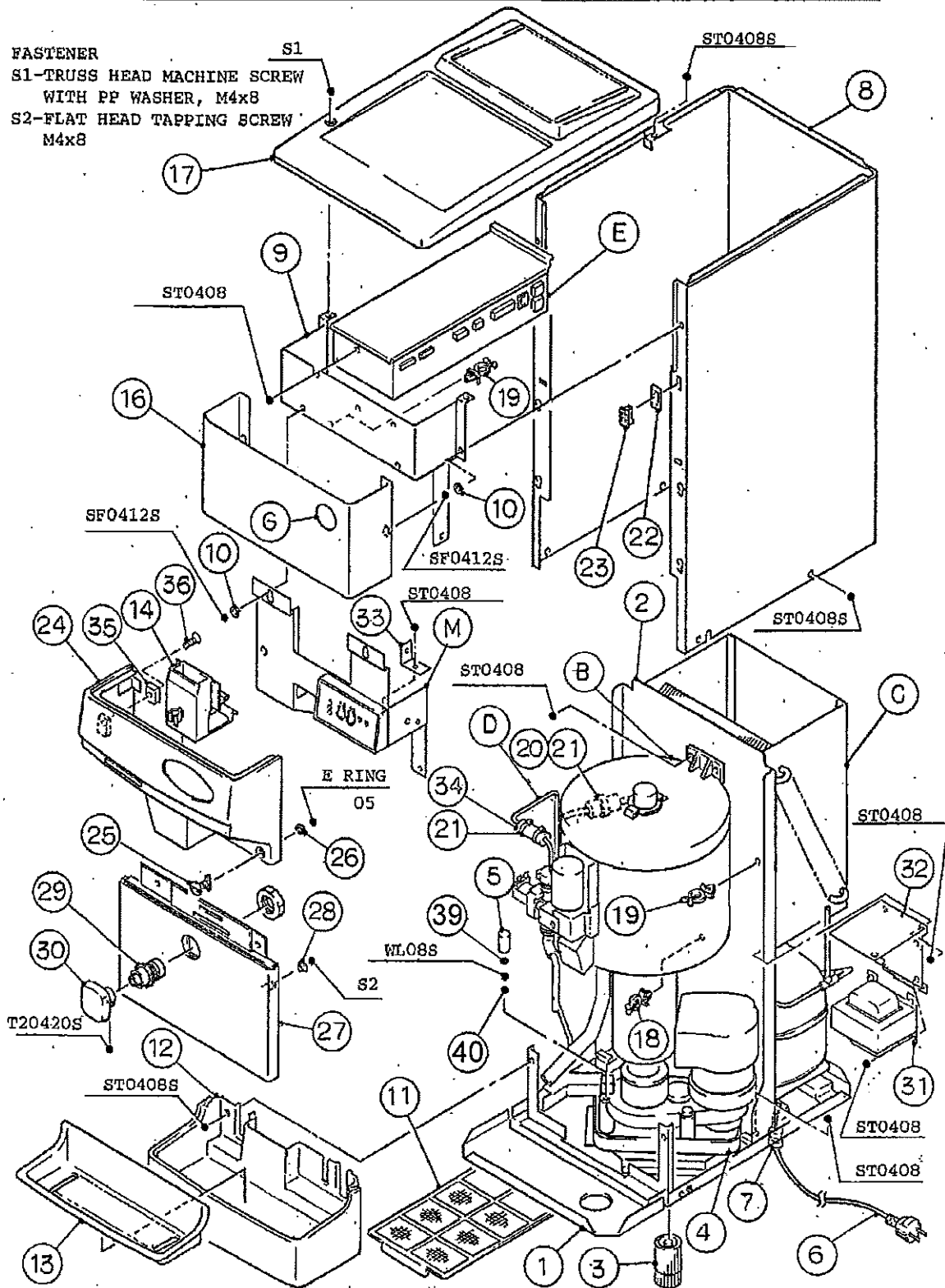
FASTENER
S1-TRUSS HEAD MACHINE SCREW
WITH PP WASHER, M4x8
S2-FLAT HEAD TAPPING SCREW
M4x8

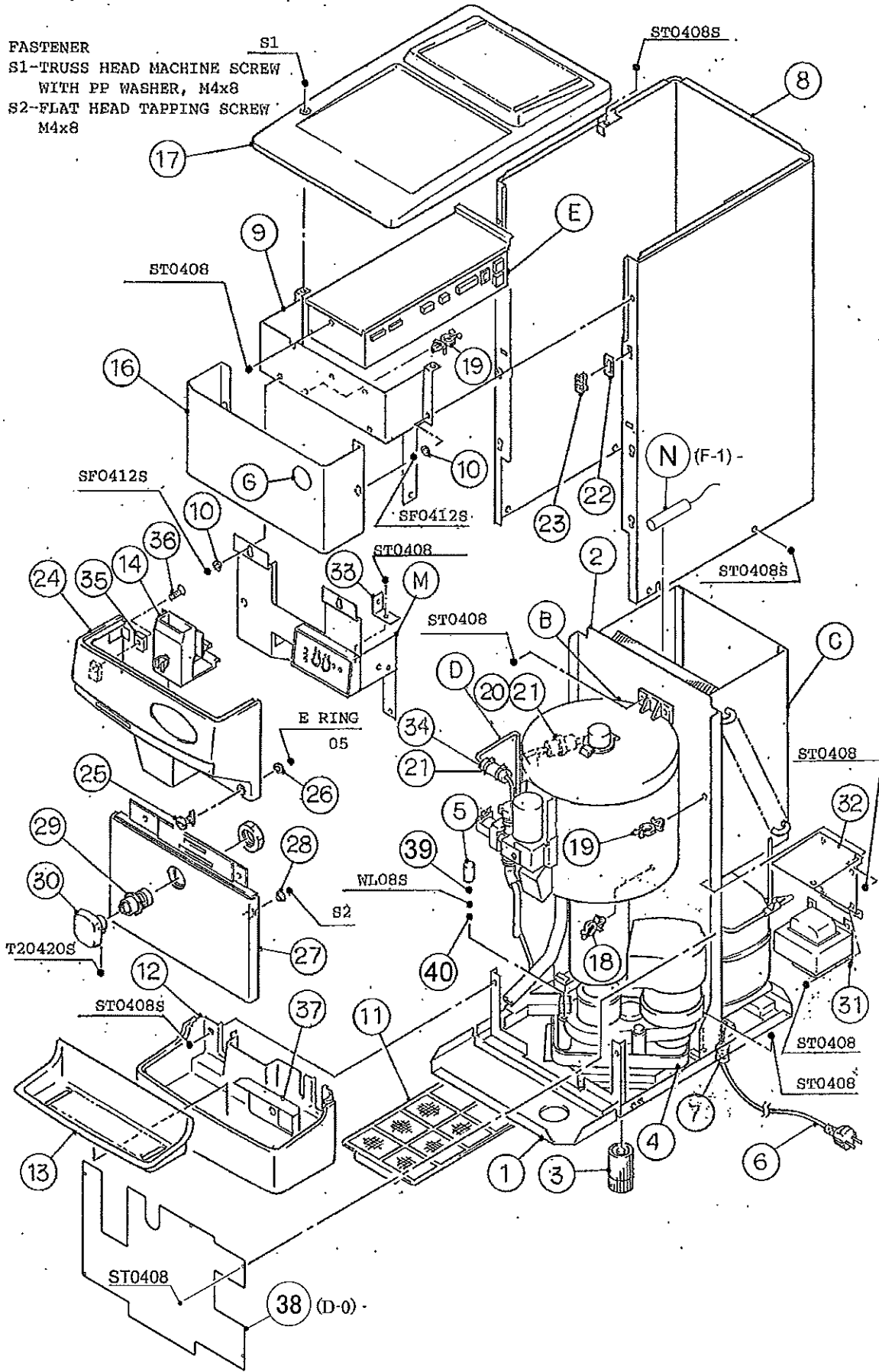


HE
DCM-120FE

A. ICE DISPENSER ASSY

(J-5)(K-1)(A-0)





HE

MODEL: DCM-120FE TITLE: A. ICE DISPENSER ASSY							
INDEX NO.	DESCRIPTION	MATERIAL OR MODEL NUMBER	PART NUMBER	REQ'D NUMBER			
				H-1	H-2 J-0	J-1	J-2
B	ICE MAKING UNIT	-	229689A01	1	1	-	
			229689A02			1	1
C	REFRIGERATION CIRCUIT	-	109499A01	1	1	x 1	
			109499A02			o 1	1
D	WATER CIRCUIT	-	109498A01	1	1	1	1
E	CONTROL BOX ASSY	-	229735A02	1	x 1		
			229735A03		o 1	1	1
F	APRON PANEL ASSY	-	229691A01	1	-		
			229691A02		x 1		
G	LABEL LOCATION	-	229736A01	1	1	-	
			231038A01			1	1
M	BRACKET (B) ASSY	-	343423A01		o 1	1	-
			343423A02				1
1	BASE	G.S	228738G03	1	1	1	1
2	PLATE	G.S	228764G02	1	1	1	1
3	LEG		455706-01	4	4	4	4
4	DRAIN PAN	ABS	318441-01	1	1	1	1
5	VINYL CAP	SH-108	451272-01	3	3	3	3
6	POWER SUPPLY CORD (CONTINENTAL)	GTCE-3	450412-01	1	1	1	1
	POWER SUPPLY CORD (UK)	CTBS-3	452359-01	1	1	1	1
7	BUSHING	CEE-SP6P10	448949-01	1	1	1	1
8	PANEL	S.S	230443G02	1	x 1		
		S.S	230443G04		o 1	1	1
9	BRACKET - TOP	G.S	341412-01	1	x 1		
		G.S	343425-01		o 1	1	1
10	COLLAR	S.S	4H0171-01	2	o 4	4	4
11	AIR FILTER	-	341489G01	1	1	1	1
12	DRAIN PANEL	ABS	109232-02	1	1	1	1
13	GRILLE	ABS	109231-02	1	1	1	1
14	GUIDE - SHUTTER	ABS	228910-01	1	x 1		
		PP	230748-01		o 1	1	1

HE

MODEL: DCM-120FE TITLE: A. ICE DISPENSER ASSY							
INDEX NO.	DESCRIPTION	MATERIAL OR MODEL NUMBER	PART NUMBER	REQ'D NUMBER			
				J-3	J-4	J-5	K-1 A-0
B	ICE MAKING UNIT	-	229689A02	-			
			229689A03	1	1	1	1
C	REFRIGERATION CIRCUIT	-	109499A02	1	1	1	1
D	WATER CIRCUIT	-	109498A01	1	1	1	1
E	CONTROL BOX ASSY	-	229735A03	1	1	-	
			229735A04			1	1
F							
G	LABEL LOCATION	-	231038A01	1	1	1	1
M	BRACKET (B) ASSY	-	343423A02	-			
			343423A03	1	1	-	
			345346A01			1	1
1	BASE	G.S	228738G03	1	1	1	1
2	PLATE	G.S	228764G02	1	1	1	1
3	LEG		455706-01	4	4	4	4
4	DRAIN PAN	ABS	318441-01	1	1	1	1
5	VINYL CAP	SH-108	451272-01	3	3	3	3
6	POWER SUPPLY CORD (CONTINENTAL)	GTCE-3	450412-01	1	1	1	1
	POWER SUPPLY CORD (UK)	CTBS-3	452359-01	1	1	1	1
7	BUSHING	CEE-SP6P10	448949-01	1	1	1	1
8	PANEL	S.S	230443G04	1	1	1	1
9	BRACKET - TOP	G.S	343425-01	1	1	1	1
10	COLLAR	S.S	4H0171-01	4	4	4	4
11	AIR FILTER	-	341489G01	1	1	1	1
12	DRAIN PANEL	ABS	109232-02	1	1	1	1
13	GRILLE	ABS	109231-02	1	1	1	1
14	GUIDE - SHUTTER	PP	230748-01	1	1	1	1
15	GUIDE - APRON PANEL	ABS	228909-02	1	1	1	1
16	FRONT PANEL	S.S	343426-01	1	1	1	1
17	TOP PANEL	ABS	109229-02	1	1	1	1
18	CLAMP	NO. 249	427902-03	1	1	1	1
19	CLAMP	NO. 4253	427902-05	6	6	6	6

HE

MODEL: DCM-120FE		TITLE: A. ICE DISPENSER ASSY					
INDEX NO.	DESCRIPTION	MATERIAL OR MODEL NUMBER	PART NUMBER	REQ'D NUMBER			
				A-1 B-1 B-2	B-3	B-4 C-1 C-2	D-0 E-0
B	ICE MAKING UNIT	-	229689A03	1	-		
			229689A05		1	x 1	
			229689A07			o 1	1
C	REFRIGERATION CIRCUIT	-	109499A02	1	1	1	1
D	WATER CIRCUIT	-	109498A01	1	1	x 1	
			109498A02			o 1	1
E	CONTROL BOX ASSY	-	229735A04	1	1	x 1	
			229735A05			o 1	1
F							
G	LABEL LOCATION	-	231038A01	1	1	1	1
M	BRACKET (B) ASSY	-	345346A01	1	1	1	1
1	BASE	G.S	228738G03	1	1	1	1
2	PLATE	G.S	228764G02	1	1	1	x 1
			228764G04				o 1
3	LEG		455706-01	4	4	4	4
4	DRAIN PAN	ABS	318441-01	1	1	1	1
5	VINYL CAP	SH-108	451272-01	3	3	3	3
6	POWER SUPPLY CORD (CONTINENTAL)	GTCE-3	450412-01	1	1	1	1
	POWER SUPPLY CORD (UK)	CTBS-3	452359-01	1	1	1	1
7	BUSHING	CEE-SP6P10	448949-01	1	1	1	1
8	PANEL	S.S	230443G04	1	1	1	1
9	BRACKET - TOP	G.S	343425-01	1	1	1	1
10	COLLAR	S.S	4H0171-01	4	4	4	4
11	AIR FILTER	-	341489G01	1	1	1	1
12	DRAIN PANEL	ABS	109232-02	1	1	1	1
13	GRILLE	ABS	109231-02	1	1	1	1
14	GUIDE - SHUTTER	PP	230748-01	1	1	1	1
15	GUIDE - APRON PANEL	ABS	228909-02	1	1		
16	FRONT PANEL	S.S	343426-01	1	1		
17	TOP PANEL	ABS	109229-02	1	1		

HE

MODEL: DCM-120FE		TITLE: A. ICE DISPENSER ASSY					
INDEX NO.	DESCRIPTION	MATERIAL OR MODEL NUMBER	PART NUMBER	REQ'D NUMBER			
				F-1 G-0	G-1		
B	ICE MAKING UNIT	-	229689A07	1	1		
C	REFRIGERATION CIRCUIT	-	109499A02	-			
			109499A03	1	1		
D	WATER CIRCUIT	-	109498A02	-			
			113786A03	1	1		
E	CONTROL BOX ASSY	-	229735A05	-			
			248337A01	1	1		
F							
G	LABEL LOCATION	-	231038A01	-			
			251021A01	1	1		
M	BRACKET (B) ASSY	-	345346A01	-			
			367887A01	1	1		
N	THERMISTOR LOCATION	-	245889A02	1	1		
1	BASE	G.S	228738G03	1	1		
2	PLATE	G.S	228764G04	1	1		
3	LEG		455706-01	4	4		
4	DRAIN PAN	ABS	318441-01	1	1		
5	VINYL CAP	SH-108	451272-01	x 3			
6	POWER SUPPLY CORD (CONTINENTAL)	GTCE-3	450412-01	1	1		
	POWER SUPPLY CORD (UK)	CTBS-3	452359-01	1	1		
7	BUSHING	CEE-SP6P10	448949-01	1	1		
8	PANEL	S.S	230443G04	1	1		
9	BRACKET - TOP	G.S	343425-01	1	1		
10	COLLAR	S.S	4H0171-01	4	4		
11	AIR FILTER	-	341489G01	1	1		
12	DRAIN PANEL	ABS	109232-02	1	1		
13	GRILLE	ABS	109231-02	1	1		
14	GUIDE - SHUTTER	PP	230748-01	1	1		
15	GUIDE - APRON PANEL	ABS	228909-02	1	1		
16	FRONT PANEL	S.S	343426-01	1	1		

HE

MODEL: DCM-120FE		TITLE: A. ICE DISPENSER ASSY					
INDEX NO.	DESCRIPTION	MATERIAL OR MODEL NUMBER	PART NUMBER	REQ'D NUMBER			
				H-1	H-2 J-0	J-1	J-2
15	GUIDE - APRON PANEL	ABS	228909-01	1	x 1		
		ABS	228909-02		o 1	1	1
16	FRONT PANEL	S.S	341410-01	1	x 1		
		S.S	343426-01		o 1	1	1
17	TOP PANEL	ABS	109229-01	1	x 1		
		ABS	109229-02		o 1	1	1
18	CLAMP	NO. 249	427902-03	1	1	1	1
19	CLAMP	NO. 4253	427902-05	4	o 5	6	6
20	INSULATION TUBE	L=50	7762-1020	1	x 1		
		L=50	109496-38		x 1		
		L=50	109793-19		o 1	1	1
21	TIE	CV-150	7920-0003	1	1	1	1
22	SPACER	S.S	456500-01		o 1	1	1
23	MAGNET CATCH	MC-340-T2	452935-01		o 2	2	2
24	APRON PANEL (A)	ABS	230789G01		o 1	1	1
25	SCREW	ALUMINUM	343385-01		o 2	2	2
26	WASHER	PTFE	456488-01		o 2	2	2
27	APRON PANEL (B)	ABS	109779G01		o 1	1	1
28	COLLAR	S.S	4H0171-01		o 4	4	4
29	PUSH SWITCH	HS-20	460111-01		o 1	1	1
30	PUSH LEVER	ABS	341617-02		o 1	1	1
31	TRANSFORMER	RY12-19738	455656-01	1	1	1	1
32	BRACKET - TRANSFORMER	G.S	454786-01	1	1	1	1
33	BRACKET		456991-01				1

HE

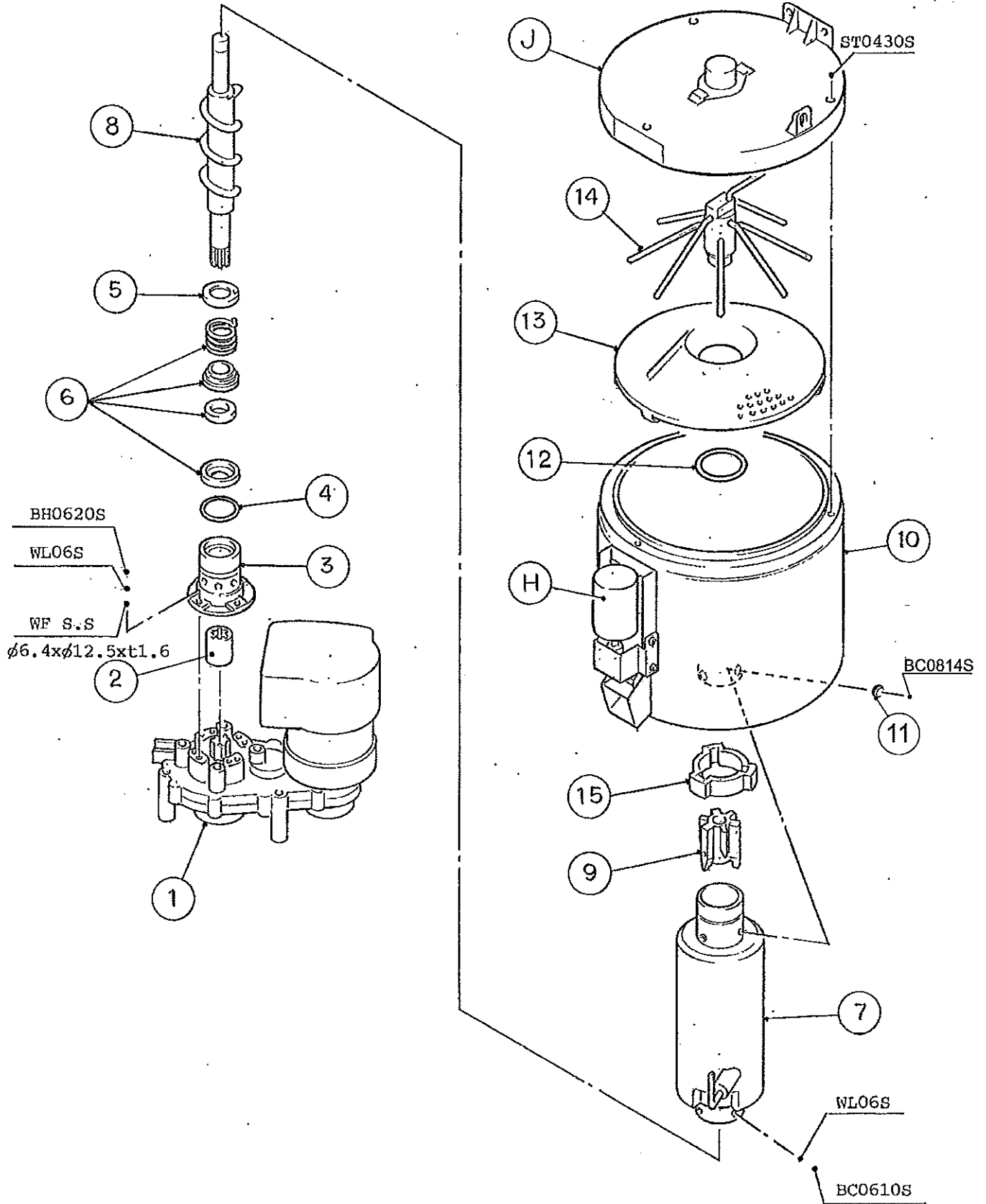
MODEL: DCM-120FE TITLE: A. ICE DISPENSER ASSY							
INDEX NO.	DESCRIPTION	MATERIAL OR MODEL NUMBER	PART NUMBER	REQ'D NUMBER			
				J-3	J-4	J-5	K-1 A-0
20	INSULATION TUBE	L=50	109793-19	1	1	1	1
21	TIE	CV-150	7920-0003	1	1	1	1
22	SPACER	S.S	456500-01	1	1	1	1
23	MAGNET CATCH	MC-340-T2	452935-01	2	2	2	2
24	APRON PANEL (A)	ABS	230789G01	1	1	-	
			230789G04			1	1
25	SCREW	ALUMINUM	343385-01	2	2	2	2
26	WASHER	PTFE	456488-01	2	2	2	2
27	APRON PANEL (B)	ABS	109779G01	1	1	1	1
28	COLLAR	S.S	4H0171-01	4	4	4	4
29	PUSH SWITCH	HS-20	460111-01	1	1	1	1
30	PUSH LEVER	ABS	341617-02	1	1	1	1
31	TRANSFORMER	RY12-19738	455656-01	1	1	1	1
32	BRACKET - TRANSFORMER	G.S	454786-01	1	1	1	1
33	BRACKET		456991-01	1	1	1	1
34	INSULATION TUBE	L=80	7762-1020		1	1	1
35	MAGNET		457962-01			1	1
36	TAPPING SCREW - FLAT HEAD		457963-01			1	1

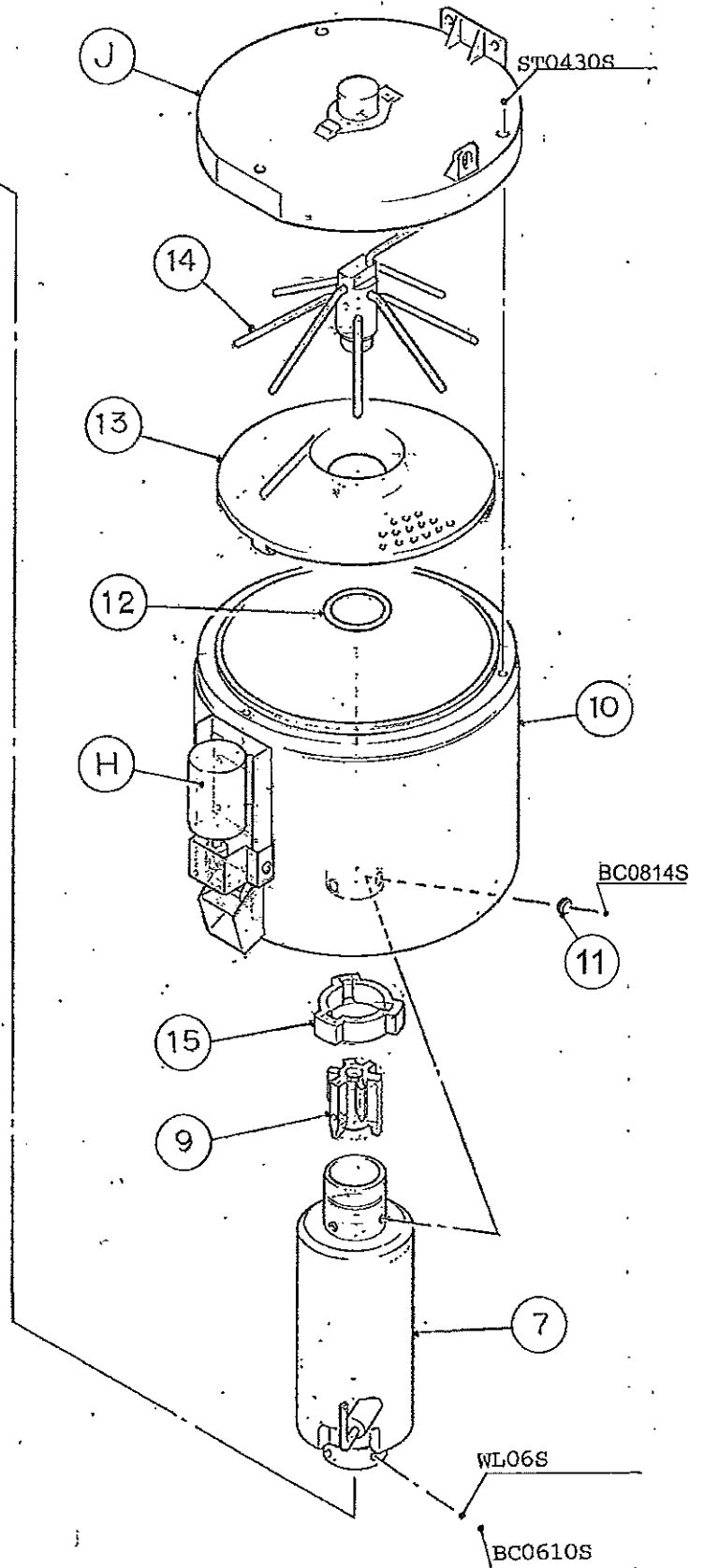
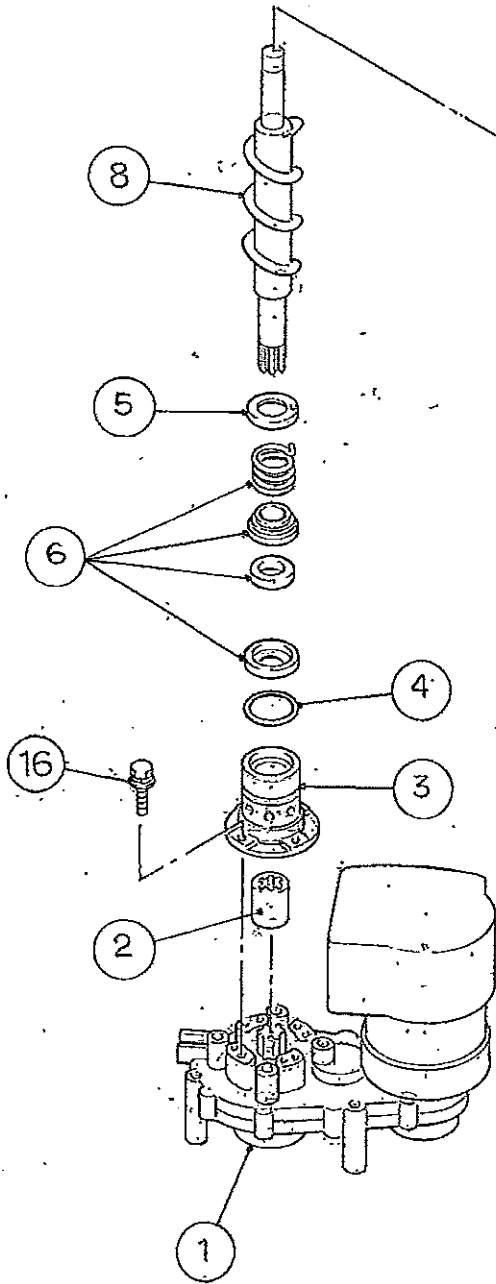
HE

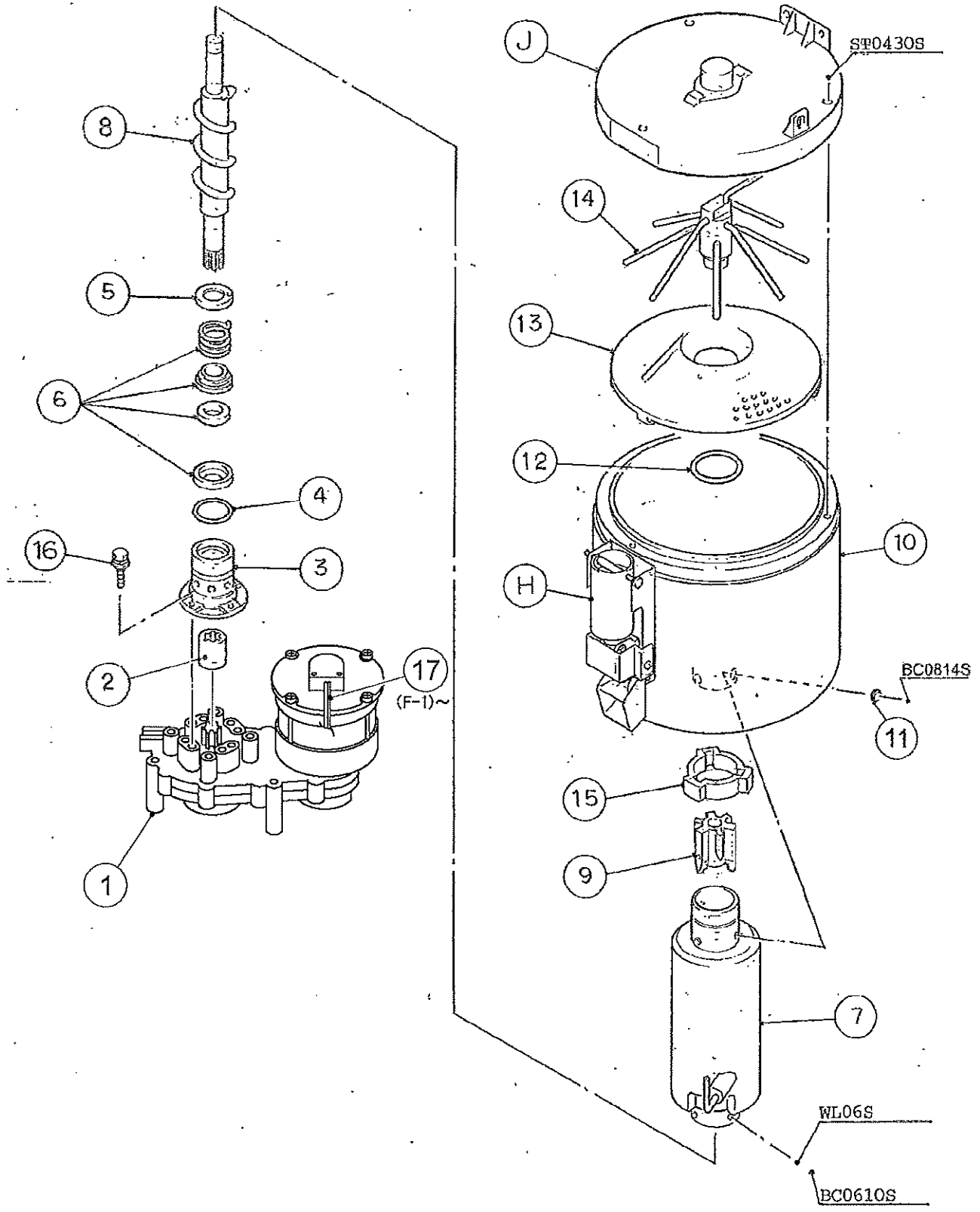
MODEL: DCM-120FE		TITLE: A. ICE DISPENSER ASSY					
INDEX NO.	DESCRIPTION	MATERIAL OR MODEL NUMBER	PART NUMBER	REQ'D NUMBER			
				A-1 B-1 B-2	B-3	B-4 C-1 C-2	D-0 E-0
18	CLAMP	NO. 249	427902-03	1	1	1	1
19	CLAMP	NO. 4253	427902-05	6	6	6	6
20	INSULATION TUBE	L=50	109793-19	1	1	1	1
21	TIE	CV-150	7920-0003	1	1	1	1
22	SPACER	S.S	456500-01	1	1	1	1
23	MAGNET CATCH	MC-340-T2	452935-01	2	2	2	2
24	APRON PANEL (A)	ABS	230789G04	1	1	1	1
25	SCREW	ALUMINUM	343385-01	2	2	2	2
26	WASHER	PTFE	456488-01	2	2	2	2
27	APRON PANEL (B)	ABS	109779G01	1	1	1	1
28	COLLAR	S.S	4H0171-01	4	4	4	4
29	PUSH SWITCH	HS-20	460111-01	1	1	1	1
30	PUSH LEVER	ABS	341617-02	1	1	1	x 1
			357684G01				o 1
31	TRANSFORMER	RY12-19738	455656-01	1	1	1	1
32	BRACKET - TRANSFORMER	G.S	454786-01	1	1	1	1
33	BRACKET		456991-01	1	1	1	1
34	INSULATION TUBE	L=80	7762-1020	1	1	1	1
35	MAGNET		457962-01	1	1	1	1
36	TAPPING SCREW - FLAT HEAD		457963-01	1	1	1	1
37	BRACKET - DRAIN		351111-01	1	1	1	1
38	BRACKET - COVER	G.S	364670-01				1

HE

MODEL: DCM-120FE				TITLE: A. ICE DISPENSER ASSY			
INDEX NO.	DESCRIPTION	MATERIAL OR MODEL NUMBER	PART NUMBER	REQ'D NUMBER			
				F-1 G-0	G-1		
17	TOP PANEL	ABS	109229-02	1	1		
18	CLAMP	NO. 249	427902-03	1	1		
19	CLAMP	NO. 4253	427902-05	6	6		
20	INSULATION TUBE	L=50	109793-19	1	1		
21	TIE	CV-150	7920-0003	1	1		
22	SPACER	S.S	456500-01	1	1		
23	MAGNET CATCH	MC-340-T2	452935-01	2	2		
24	APRON PANEL (A)	ABS	230789G04	1	1		
25	SCREW	ALUMINUM	343385-01	2	2		
26	WASHER	PTFE	456488-01	2	2		
27	APRON PANEL (B)	ABS	109779G01	1	1		
28	COLLAR	S.S	4H0171-01	4	4		
29	PUSH SWITCH	HS-20	460111-01	1	1		
30	PUSH LEVER	ABS	357684G01	1	1		
31	TRANSFORMER	RY12-19738	455656-01	x 1			
		PY12-20118	468588-01	o 1	1		
32	BRACKET - TRANSFORMER	G.S	454786-01	1	1		
33	BRACKET		456991-01	1	1		
34	INSULATION TUBE	L=80	7762-1020	1	1		
35	MAGNET		457962-01	1	1		
36	TAPPING SCREW - FLAT HEAD		457963-01	1	1		
37	BRACKET - DRAIN		351111-01	1	1		
38	BRACKET - COVER	G.S	364670-01	1	1		
39	SCREW – M8	S.S	458298-01	o 3	o 3		
40	SEAL WASHER		458299-01	o 3	o 3		







HE

MODEL: DCM-120FE TITLE: B. ICE MAKING UNIT							
INDEX NO.	DESCRIPTION	MATERIAL OR MODEL NUMBER	PART NUMBER	REQ'D NUMBER			
				H-1	H-2 J-0	J-1	J-2
H	SHUTTER ASSY	-	228920A01	1	1	1	1
J	COVER ASSY - BIN TOP	-	228513A01	1	1	1	1
1	GEAR MOTOR	TC1149, 100V 80W	450455-01	1	1	1	1
2	COUPLING - SPLINE	S.S	418316-01	1	1	1	1
3	HOUSING	COPPER ALLOY	206013G03	1	1	1	1
4	"O" RING		7616-G040	1	1	1	1
5	RING (B)	S.S	432494-01	1	1	1	1
6	MECHANICAL SEAL	HK9A-MS	432491-01	1	1	1	1
7	EVAPORATOR - INSULATION AD	-	341259G02	1	1	1	1
8	AUGER	S.S	341449G01	1	1	1	1
9	EXTRUDING HEAD - 45C	S.S	327236G02	1	1	1	1
10	INSULATION - BIN	-	228516G05	1	1	1	1
11	SOCKET HEAD CAP SCREW	S.S, 8x14	429121-01	3	3	3	3
12	"O" RING		7616-P048	1	1	1	1
13	DRIP RING	S.S	207754-01	1	1	1	1
14	AGITATOR	S.S	314997G02	1	1	1	1
15	COVER - UPPER, EVAPORATOR	PE FOAM	413446-01	1	1	1	1

HE

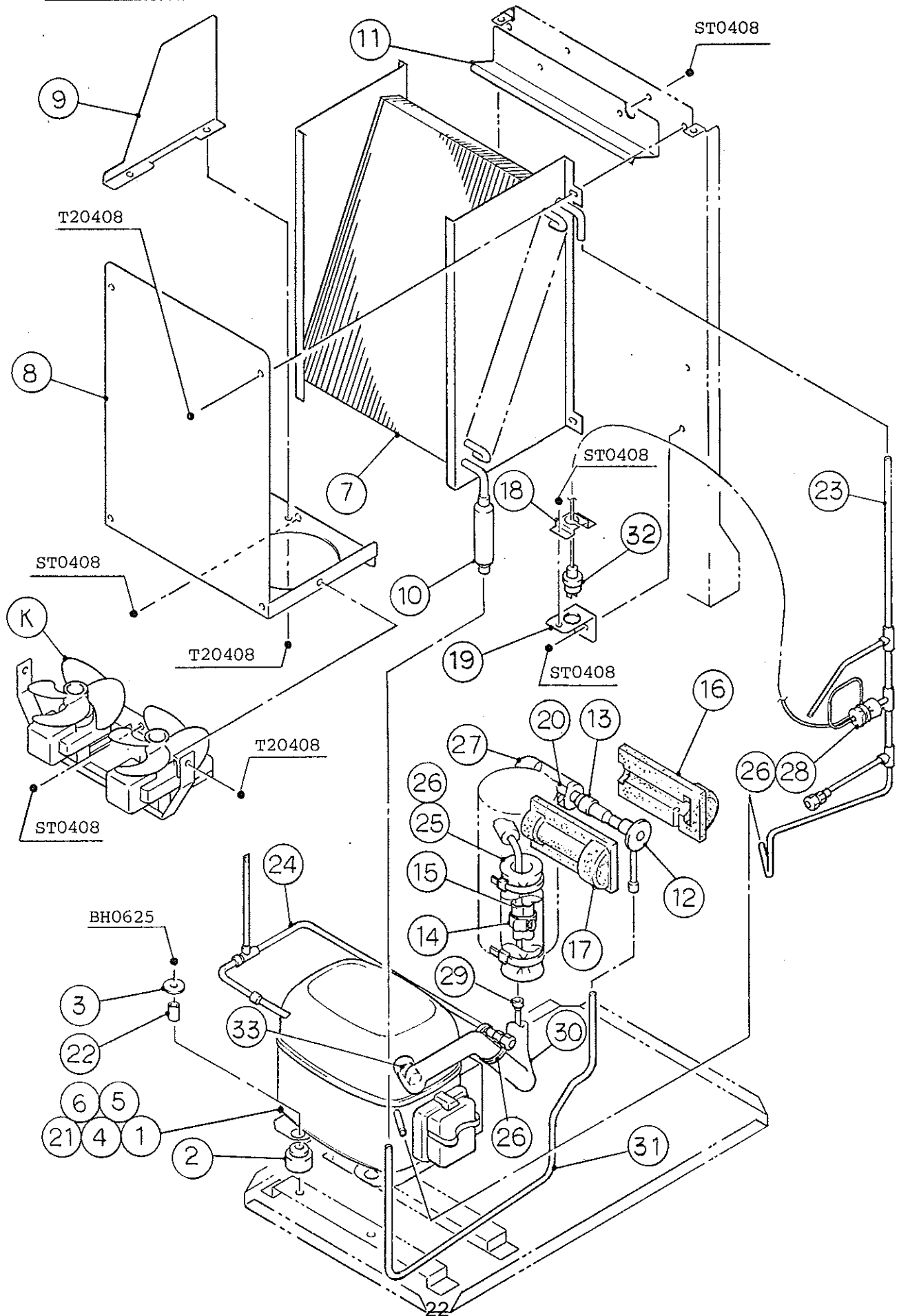
MODEL: DCM-120FE TITLE: B. ICE MAKING UNIT							
INDEX NO.	DESCRIPTION	MATERIAL OR MODEL NUMBER	PART NUMBER	REQ'D NUMBER			
				J-3	J-4	J-5	K-1 A-0
H	SHUTTER ASSY	-	228920A01	1	1	1	1
J	COVER ASSY - BIN TOP	-	228513A01	1	1	1	1
1	GEAR MOTOR	TC1149, 100V 80W	450455-01	1	1	1	1
2	COUPLING - SPLINE	S.S	418316-01	1	1	1	1
3	HOUSING	COPPER ALLOY	206013G03	1	1	1	1
4	"O" RING		7616-G040	1	1	1	1
5	RING (B)	S.S	432494-01	1	1	1	1
6	MECHANICAL SEAL	HK9A-MS	432491-01	1	1	1	1
7	EVAPORATOR - INSULATION AD	-	341259G02	1	1	1	1
8	AUGER	S.S	341449G01	1	1	1	1
9	EXTRUDING HEAD - 45C	S.S	327236G02	1	1	1	1
10	INSULATION - BIN	-	228516G05	1	1	1	1
11	SOCKET HEAD CAP SCREW	S.S, 8x14	429121-01	3	3	3	3
12	"O" RING		7616-P048	1	1	1	1
13	DRIP RING	S.S	207754-01	1	1	1	1
14	AGITATOR	S.S	314997G02	1	1	1	1
15	COVER - UPPER, EVAPORATOR	PE FOAM	413446-01	1	1	1	1
16	BOLT		458660-01				4

HE

MODEL: DCM-120FE TITLE: B. ICE MAKING UNIT							
INDEX NO.	DESCRIPTION	MATERIAL OR MODEL NUMBER	PART NUMBER	REQ'D NUMBER			
				A-1 B-1 B-2	B-3	B-4 C-1 C-2	D-0 E-0
H	SHUTTER ASSY	-	228920A01	1	-		
			237274A01		1	1	1
J	COVER ASSY - BIN TOP	-	228513A01	1	1		
1	GEAR MOTOR	TC1149, 100V 80W	450455-01	1	1	1	1
2	COUPLING - SPLINE	S.S	418316-01	1	1	1	1
3	HOUSING	COPPER ALLOY	206013G03	1	1	1	x 1
			206013G07				o 1
4	"O" RING		7616-G040	1	1	1	1
5	RING (B)	S.S	432494-01	1	1	1	1
6	MECHANICAL SEAL	HK9A-MS	432491-01	1	1	1	1
7	EVAPORATOR - INSULATION AD	-	341259G02	1	1	1	1
8	AUGER	S.S	341449G01	1	1	1	x 1
			361014G01				o 1
9	EXTRUDING HEAD - 45C	S.S	327236G02	1	1	1	1
10	INSULATION - BIN	-	228516G05	1	1	1	1
11	SOCKET HEAD CAP SCREW	S.S, 8x14	429121-01	3	3	3	x 3
	SEAL - M8		467858-01				o 3
12	"O" RING		7616-P048	1	1	1	1
13	DRIP RING	S.S	207754-01	1	1	x 1	
			207754-03			o 1	1
14	AGITATOR	S.S	314997G02	-			
			348969G01	1	1	1	1
15	COVER - UPPER, EVAPORATOR	PE FOAM	413446-01	1	1	1	1
16	BOLT		458660-01	4	4	4	4

HE

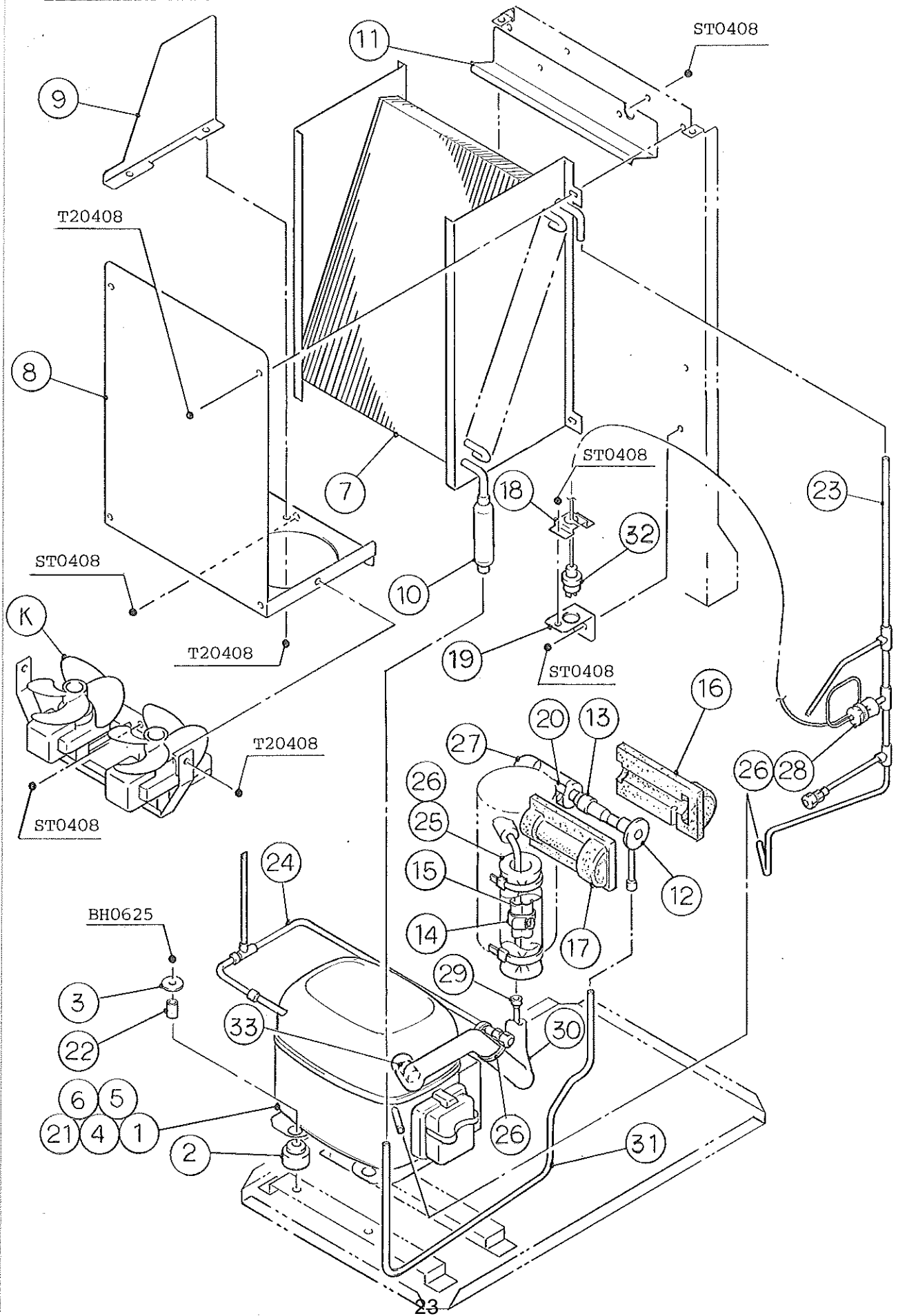
MODEL: DCM-120FE TITLE: B. ICE MAKING UNIT							
INDEX NO.	DESCRIPTION	MATERIAL OR MODEL NUMBER	PART NUMBER	REQ'D NUMBER			
				F-1 G-0	G-1		
H	SHUTTER ASSY	-	237274A01	1	1		
J	COVER ASSY - BIN TOP	-	228513A01	1	1		
1	GEAR MOTOR	TC1149, 100V 80W	450455-01	-			
		TC1155	464035-01	1	1		
2	COUPLING - SPLINE	S.S	418316-01	1	1		
3	HOUSING	COPPER ALLOY	206013G03	1	1		
4	"O" RING		7616-G040	1	1		
5	RING (B)	S.S	432494-01	1	1		
6	MECHANICAL SEAL	HK9A-MS	432491-01	1	1		
7	EVAPORATOR - INSULATION AD	-	341259G02	1	1		
8	AUGER	S.S	361014G01	1	1		
9	EXTRUDING HEAD - 45C	S.S	327236G02	1	1		
10	INSULATION - BIN	-	228516G05	1	1		
11	SEAL - M8		467858-01	3	3		
12	"O" RING		7616-P048	1	1		
13	DRIP RING	S.S	207754-03	1	1		
14	AGITATOR	S.S	348969G01	1	1		
15	COVER - UPPER, EVAPORATOR	PE FOAM	413446-01	1	1		
16	BOLT		458660-01	4	4		
17	ROTATION SENSOR	HO4053-100	459861-03	1	1		



HE
DCM-120FE

C. REFRIGERATION CIRCUIT

(B-2)(B-3) -
(A-0)(A-1)(B-1)
(J-4)(J-5)(K-1)
(J-1)(J-2)(J-3)



ハイブリッド冷凍機

HE

MODEL: DCM-120FE				TITLE: C. REFRIGERATION CIRCUIT			
INDEX NO.	DESCRIPTION	MATERIAL OR MODEL NUMBER	PART NUMBER	REQ'D NUMBER			
				H-1	H-2 J-0	J-1	J-2
K	FAN MOTOR ASSY	-	228777A01	1	1	1	1
1	COMPRESSOR	SC15G	455606-01	1	1	1	1
2	GROMMET		450897-01	4	4	4	4
3	WASHER CUSHION		450894-01	1	1	1	1
4	START CAPACITOR		452238-01	1	1	-	
		117U5017	456350-01			1	1
5	STARTER	117U6005	455607-01	1	1	1	1
6	CORD RELIEF	103N1004	452239-01	1	1	1	1
7	CONDENSER	-	109205-01	1	1	1	1
8	SHROUD	G.S	341306-01	1	1	1	1
9	SHROUD (B)	G.S	454829-01	1	1	1	1
10	DRIER	DY-15QHD-13	458776-01	1	1	1	1
11	BARRIER - CONDENSER	G.S	454777-01	1	1	1	1
12	EXPANSION VALVE	HFE-5QHD-1	446808-01	1	1	1	1
13	REDUCER	COPPER	421904-01	1	1	1	1
14	CLAMP	S.S	443461-01	1	1	1	1
15	HOLDER - EXPANSION VALVE	S.S	451267-01	1	1	1	1
16	COVER (A) - EXPANSION VALVE	PE FOAM	324313-01	1	1	1	1
17	COVER (B) - EXPANSION VALVE	PE FOAM	324313-02	1	1	1	1
18	BRACKET (A) - PRESSURE SWITCH	G.S	425506-01	1	1	1	1
19	BRACKET (B) - PRESSURE SWITCH	G.S	455309-01	1	1	1	1
20	COPPER TUBE - L3	COPPER	454880-02	1	1	1	1
21	COVER	103N2002	452240-01	1	1	1	1
22	BUSH CUSHION		450895-01	4	4	4	4
23	COPPER TUBE - H1	COPPER	341355G01	1	1	-	
		COPPER	341355G02			1	1
24	COPPER TUBE - L2	COPPER	341357G01	1	1	1	1
25	INSULATION TUBE	7762-2949, L=150	109499-37	1	1	1	1
26	TIE	CV-150	7920-0003	5	o 4	4	4
27	INSULATION TUBE	7762-1030, L=270	109499-39	1	1	1	1
28	INSULATION TUBE	7762-0717, L=30	109499-40	1	1	1	1
29	COPPER TUBE	COPPER	341354-01	1	1	1	1
30	INSULATION TUBE	L=450	7762-1030	1	1	1	1
31	COPPER TUBE - H2	COPPER	341536-01	1	1	1	1

HE

MODEL: DCM-120FE		TITLE: C. REFRIGERATION CIRCUIT					
INDEX NO.	DESCRIPTION	MATERIAL OR MODEL NUMBER	PART NUMBER	REQ'D NUMBER			
				J-3	J-4	J-5	K-1 A-0
K	FAN MOTOR ASSY	-	228777A01	1	1	1	1
1	COMPRESSOR	SC15G	455606-01	1	1	1	1
2	GROMMET		450897-01	4	4	4	4
3	WASHER CUSHION		450894-01	1	1	1	1
4	START CAPACITOR	117U5017	456350-01	1	1	1	1
5	STARTER	117U6005	455607-01	1	1	1	1
6	CORD RELIEF	103N1004	452239-01	1	1	1	1
7	CONDENSER	-	109205-01	1	1	1	1
8	SHROUD	G.S	341306-01	1	1	1	1
9	SHROUD (B)	G.S	454829-01	1	1	1	1
10	DRIER	DY-15QHD-13	458776-01	1	1	1	1
11	BARRIER - CONDENSER	G.S	454777-01	1	1	1	1
12	EXPANSION VALVE	HFE-5QHD-1	446808-01	1	1	1	1
13	REDUCER	COPPER	421904-01	1	1	1	1
14	CLAMP	S.S	443461-01	1	1	1	1
15	HOLDER - EXPANSION VALVE	S.S	451267-01	1	1	1	1
16	COVER (A) - EXPANSION VALVE	PE FOAM	324313-01	1	1	1	1
17	COVER (B) - EXPANSION VALVE	PE FOAM	324313-02	1	1	1	1
18	BRACKET (A) - PRESSURE SWITCH	G.S	425506-01	1	1	1	1
19	BRACKET (B) - PRESSURE SWITCH	G.S	455309-01	1	1	1	1
20	COPPER TUBE - L3	COPPER	454880-02	1	1	1	1
21	COVER	103N2002	452240-01	1	1	1	1
22	BUSH CUSHION		450895-01	4	4	4	4
23	COPPER TUBE - H1	COPPER	341355G02	1	1	1	1
24	COPPER TUBE - L2	COPPER	341357G01	1	1	1	1
25	INSULATION TUBE	7762-2949, L=150	109499-37	1	1	1	1
26	TIE	CV-150	7920-0003	4	4	4	4
27	INSULATION TUBE	7762-1030, L=270	109499-39	1	1	1	1
28	INSULATION TUBE	7762-0717, L=30	109499-40	1	1	1	1
29	COPPER TUBE	COPPER	341354-01	1	1	1	1
30	INSULATION TUBE	L=450	7762-1030	1	1	1	1
31	COPPER TUBE - H2	COPPER	341536-01	1	1	1	1

HE

MODEL: DCM-120FE		TITLE: C. REFRIGERATION CIRCUIT					
INDEX NO.	DESCRIPTION	MATERIAL OR MODEL NUMBER	PART NUMBER	REQ'D NUMBER			
				A-1 B-1 B-2	B-3	B-4 C-1 C-2	D-0 E-0
K	FAN MOTOR ASSY	-	228777A01	1	1	1	1
1	COMPRESSOR	SC15G	455606-01	1	1	1	1
2	GROMMET		450897-01	4	4	4	4
3	WASHER CUSHION		450894-01	1	1	1	1
4	START CAPACITOR	117U5017	456350-01	1	1	1	1
5	STARTER	117U6005	455607-01	1	1	1	1
6	CORD RELIEF	103N1004	452239-01	1	1	1	1
7	CONDENSER	-	109205-01	1	1	1	1
8	SHROUD	G.S	341306-01	1	1	1	1
9	SHROUD (B)	G.S	454829-01	1	1	1	1
10	DRIER	DY-15QHD-13	458776-01	1	1	1	1
11	BARRIER - CONDENSER	G.S	454777-01	1	1	1	1
12	EXPANSION VALVE	HFE-5QHD-1	446808-01	1	1	1	1
13	REDUCER	COPPER	421904-01	1	1	1	1
14	CLAMP	S.S	443461-01	1	1	1	1
15	HOLDER - EXPANSION VALVE	S.S	451267-01	1	1	1	1
16	COVER (A) - EXPANSION VALVE	PE FOAM	324313-01	1	1	1	1
17	COVER (B) - EXPANSION VALVE	PE FOAM	324313-02	1	1	1	1
18	BRACKET (A) - PRESSURE SWITCH	G.S	425506-01	1	1	1	1
19	BRACKET (B) - PRESSURE SWITCH	G.S	455309-01	1	1	1	1
20	COPPER TUBE - L3	COPPER	454880-02	1	1	1	1
21	COVER	103N2002	452240-01	1	1	1	1
22	BUSH CUSHION		450895-01	4	4	4	4
23	COPPER TUBE - H1	COPPER	341355G02	1	1	1	1
24	COPPER TUBE - L2	COPPER	341357G01	1	1	1	1
25	INSULATION TUBE	7762-2949, L=150	109499-37	1	1	1	1
26	TIE	CV-150	7920-0003	4	4	4	4
27	INSULATION TUBE	7762-1030, L=270	109499-39	1	1	1	1
28	INSULATION TUBE	7762-0717, L=30	109499-40	1	1	1	1
29	COPPER TUBE	COPPER	341354-01	1	1	1	1
30	INSULATION TUBE	L=450	7762-1030	1	1	1	1
31	COPPER TUBE - H2	COPPER	341536-01	1	1	1	1

HE

MODEL: DCM-120FE		TITLE: C. REFRIGERATION CIRCUIT					
INDEX NO.	DESCRIPTION	MATERIAL OR MODEL NUMBER	PART NUMBER	REQ'D NUMBER			
				F-1 G-0	G-1		
K	FAN MOTOR ASSY	-	228777A01	1	1		
1	COMPRESSOR	SC15G	455606-01	1	1		
2	GROMMET		450897-01	4	4		
3	WASHER CUSHION		450894-01	1	1		
4	START CAPACITOR	117U5017	456350-01	1	1		
5	STARTER	117U6005	455607-01	1	1		
6	CORD RELIEF	103N1004	452239-01	1	1		
7	CONDENSER	-	109205-01	x 1			
			109205-02	o 1	1		
8	SHROUD	G.S	341306-01	1	1		
9	SHROUD (B)	G.S	454829-01	1	1		
10	DRIER	DY-15QHD-13	458776-01	1	1		
11	BARRIER - CONDENSER	G.S	454777-01	1	1		
12	EXPANSION VALVE	HFE-5QHD-1	446808-01	1	1		
13	REDUCER	COPPER	421904-01	1	1		
14	CLAMP	S.S	443461-01	1	1		
15	HOLDER - EXPANSION VALVE	S.S	451267-01	1	1		
16	COVER (A) - EXPANSION VALVE	PE FOAM	324313-01	1	1		
17	COVER (B) - EXPANSION VALVE	PE FOAM	324313-02	1	1		
18	BRACKET (A) - PRESSURE SWITCH	G.S	425506-01	-			
19	BRACKET (B) - PRESSURE SWITCH	G.S	455309-01	-			
20	COPPER TUBE - L3	COPPER	454880-02	1	1		
21	COVER	103N2002	452240-01	1	1		
22	BUSH CUSHION		450895-01	4	4		
23	COPPER TUBE - H1	COPPER	341355G02	-			
			368140G01	1	1		
24	COPPER TUBE - L2	COPPER	341357G01	1	1		
25	INSULATION TUBE	7762-2949, L=150	109499-37	1	1		
26	TIE	CV-150	7920-0003	4	4		
27	INSULATION TUBE	7762-1030, L=270	109499-39	1	1		
28	INSULATION TUBE	7762-0717, L=30	109499-40	1	1		
29	COPPER TUBE	COPPER	341354-01	1	1		
30	INSULATION TUBE	L=450	7762-1030	1	1		
31	COPPER TUBE - H2	COPPER	341536-01	1	1		

HE

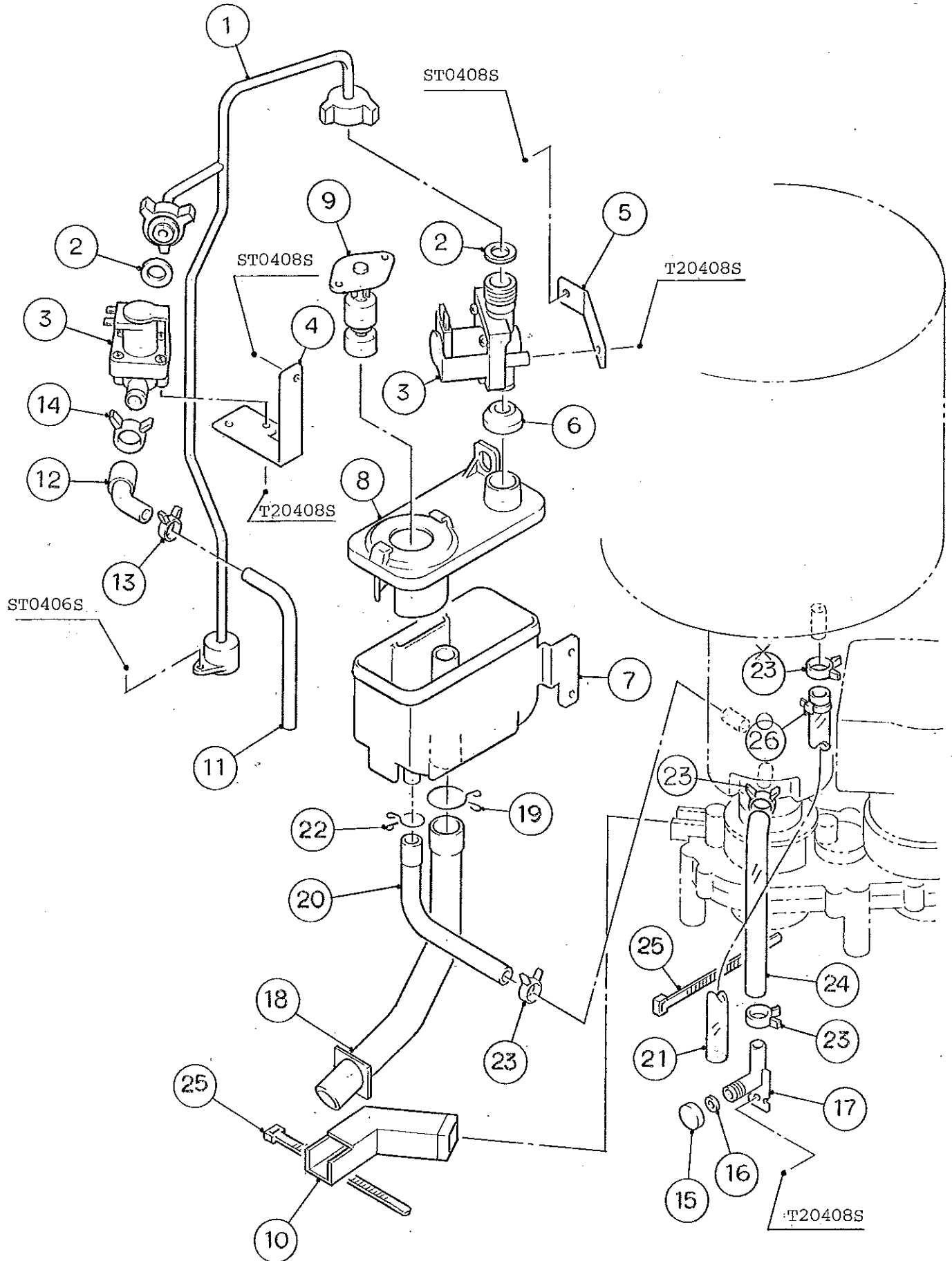
MODEL: DCM-120FE				TITLE: C. REFRIGERATION CIRCUIT			
INDEX NO.	DESCRIPTION	MATERIAL OR MODEL NUMBER	PART NUMBER	REQ'D NUMBER			
				H-1	H-2 J-0	J-1	J-2
32	PRESSURE SWITCH	ACU-2UB05	433441-06			1	1

HE

MODEL: DCM-120FE			TITLE: C. REFRIGERATION CIRCUIT				
INDEX NO.	DESCRIPTION	MATERIAL OR MODEL NUMBER	PART NUMBER	REQ'D NUMBER			
				A-1 B-1 B-2	B-3	B-4 C-1 C-2	D-0 E-0
32	PRESSURE SWITCH	ACU-2UB05	433441-06	1	1	1	1
33	RUBBER		446470-01	1	1	1	1

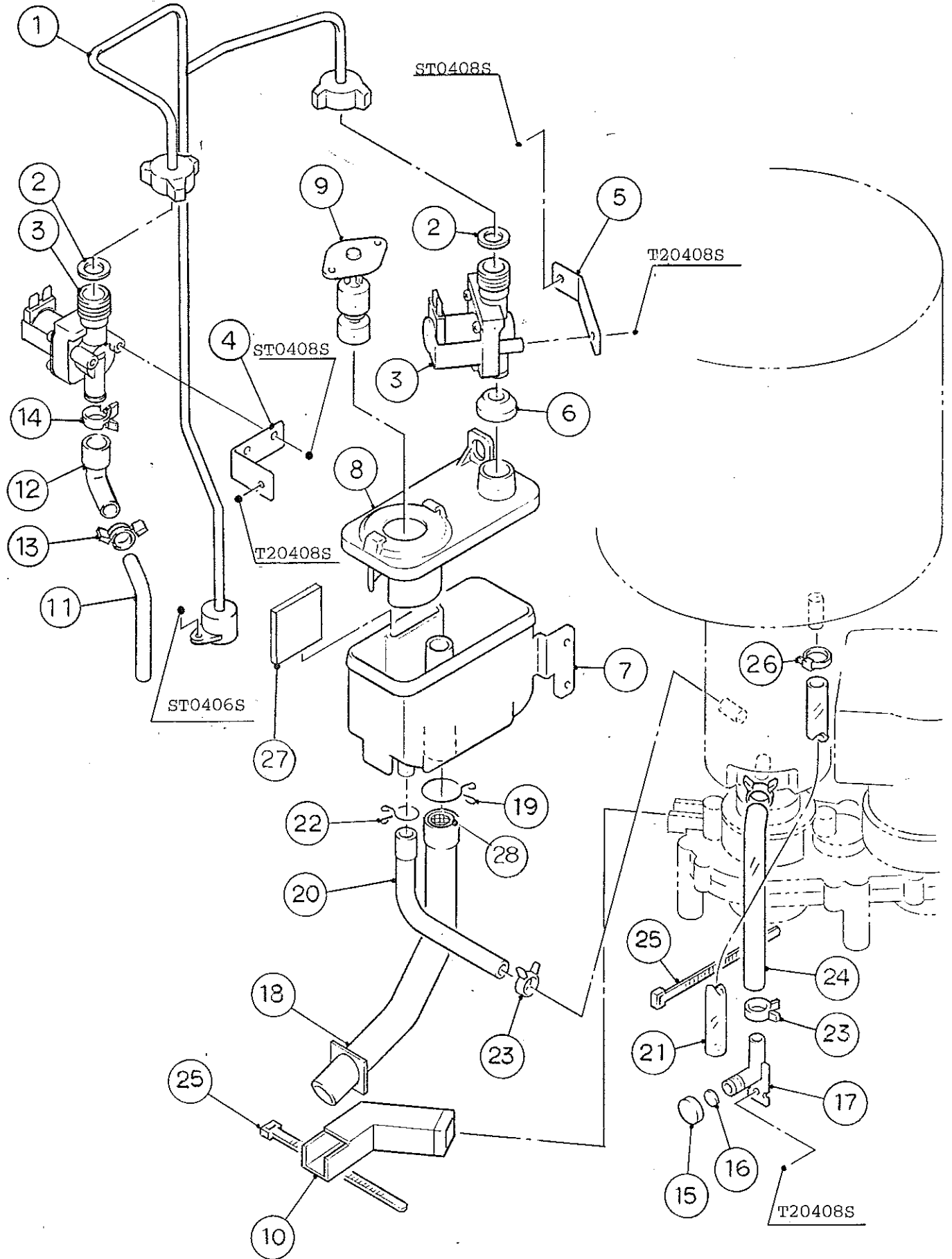
HE

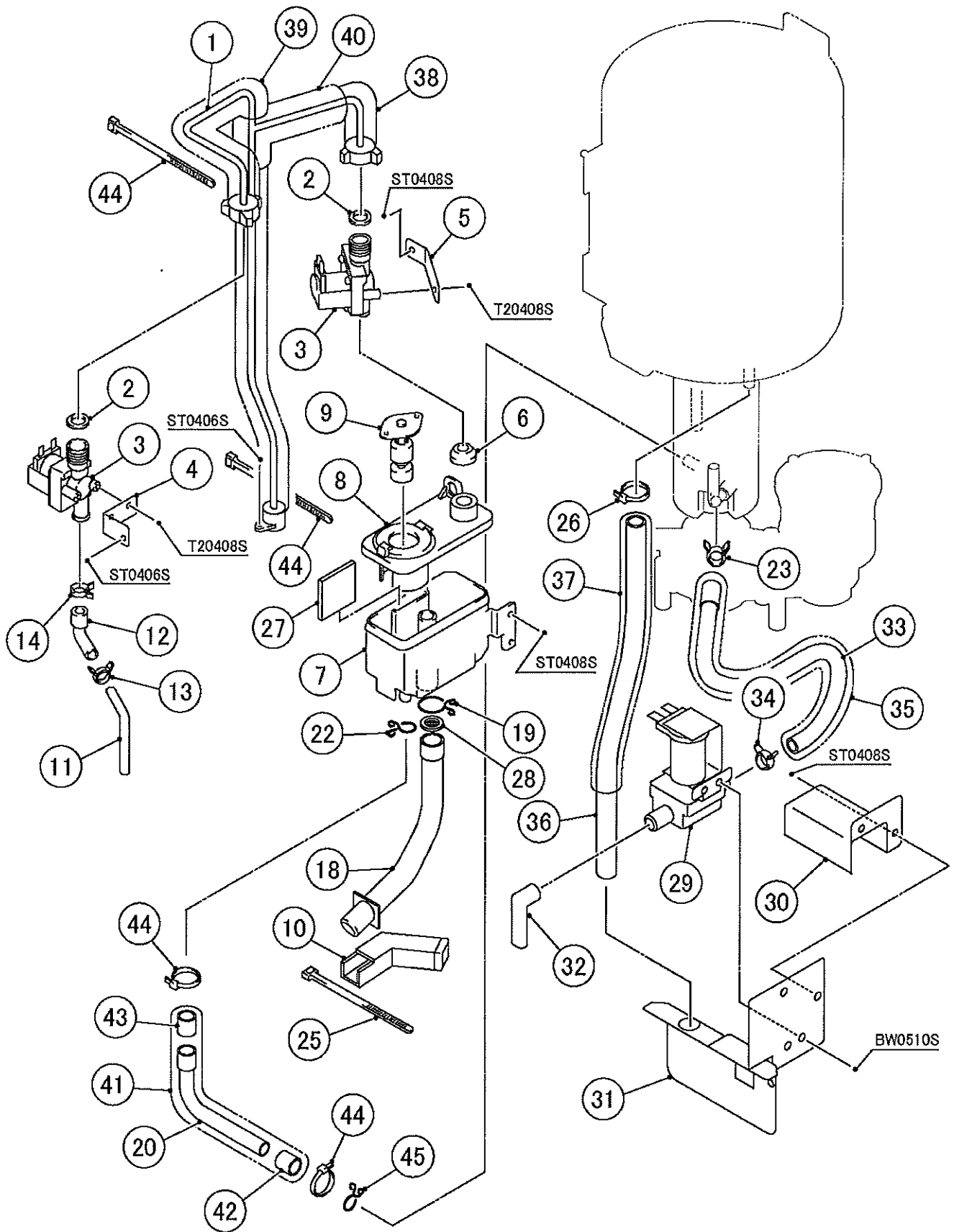
MODEL: DCM-120FE				TITLE: C. REFRIGERATION CIRCUIT			
INDEX NO.	DESCRIPTION	MATERIAL OR MODEL NUMBER	PART NUMBER	REQ'D NUMBER			
				F-1 G-0	G-1		
32	PRESSURE SWITCH	ACU-2UB05	433441-06	-			
33	RUBBER		446470-01	1	1		



D. WATER CIRCUIT

(B-3)-(E-0)
(A-0)(A-1)(B-1)(B-2)
(J-3)(J-4)(J-5)(K-1)





HE

MODEL: DCM-120FE		TITLE: D. WATER CIRCUIT					
INDEX NO.	DESCRIPTION	MATERIAL OR MODEL NUMBER	PART NUMBER	REQ'D NUMBER			
				H-1	H-2 J-0	J-1	J-2
1	PIPE - WATER SUPPLY	S.S	341528G01	1	1	1	1
2	PACKING	SI. R	413854-02	2	2	2	2
3	WATER VALVE	J246-198E	455812-01	2	2	2	2
4	BRACKET (A) - VALVE	S.S	455059-01	1	1	1	1
5	BRACKET (B) - VALVE	S.S	455047-01	1	1	1	1
6	COVER - RESERVOIR INLET	SI. R	415094-01	1	1	1	1
7	RESERVOIR	ABS	217620-01	1	1	1	1
8	COVER - RESERVOIR	ABS	217621-01	1	1	1	1
9	FLOAT SWITCH	TW-1221-101	435490-01	1	1	1	1
10	DRAIN PIPE	EPDM	454788-01	1	1	1	1
11	WATER PIPE	S.S	454881-01	1	1	1	1
12	JOINT HOSE	SILICONE	454882-01	1	1	1	1
13	CLIP BAND (A)	T14	423866-01	1	1	1	1
14	CLIP BAND (B)	T19	423866-02	1	1	1	1
15	CAP - DRAIN	C3602BD	454963-01	1	1	1	1
16	PACKING - DRAIN	SY. R	418071-03	1	1	1	1
17	PIPE - DRAIN	S.S	454964G01	1	1	1	1
18	PIPE - OVERFLOW	EPDM	342085-01	1	1	1	1
19	CLAMP	SK-25	435934-07	1	1	1	1
20	PIPE - TANK	SILICONE	455588-01	1	1	1	1
21	HOSE	7716-1216, L=350	109498-35	1	1	1	1
22	CLAMP	SK-15	435934-03	1	1	1	1
23	CLIP BAND	T15	423866-04	4	4	3	3
24	HOSE	7716-1216, L=125	109498-28	1	1	1	1
25	TIE	CV-250	7920-0011	2	2	2	2
26	TIE	CV-150	7920-0003			1	1

HE

MODEL: DCM-120FE				TITLE: D. WATER CIRCUIT			
INDEX NO.	DESCRIPTION	MATERIAL OR MODEL NUMBER	PART NUMBER	REQ'D NUMBER			
				J-3	J-4	J-5	K-1 A-0
1	PIPE - WATER SUPPLY	S.S	344566G01	1	1	1	1
2	PACKING	SI. R	413854-02	2	2	2	2
3	WATER VALVE	J246-198E	455812-01	2	2	2	2
4	BRACKET (A) - VALVE	S.S	455059-01	1	1	1	1
5	BRACKET (B) - VALVE	S.S	455047-01	1	1	1	1
6	COVER - RESERVOIR INLET	SI. R	415094-01	1	1	1	1
7	RESERVOIR	ABS	217620-01	1	1	1	1
8	COVER - RESERVOIR	ABS	217621-01	1	1	1	1
9	FLOAT SWITCH	TW-1221-101	435490-01	1	1	1	1
10	DRAIN PIPE	EPDM	454788-01	1	1	1	1
11	WATER PIPE	S.S	457277-01	1	1	1	1
12	JOINT HOSE	SILICONE	457276-01	1	1	1	1
13	CLIP BAND (A)	T14	423866-01	1	1	1	1
14	CLIP BAND (B)	T19	423866-02	1	1	1	1
15	CAP - DRAIN	C3602BD	454963-01	1	1	1	1
16	PACKING - DRAIN	SY. R	418071-03	1	1	1	1
17	PIPE - DRAIN	S.S	454964G01	1	1	1	1
18	PIPE - OVERFLOW	EPDM	342085-01	1	1	1	1
19	CLAMP	SK-25	435934-07	1	1	1	1
20	PIPE - TANK	SILICONE	455588-01	1	1	1	1
21	HOSE	7716-1216, L=350	109498-35	1	1	1	1
22	CLAMP	SK-15	435934-03	1	1	1	1
23	CLIP BAND	T15	423866-04	4	4	3	3
24	HOSE	7716-1216, L=125	109498-28	1	1	1	1
25	TIE	CV-250	7920-0011	2	2	2	2
26	TIE	CV-150	7920-0003	1	1	1	1

HE

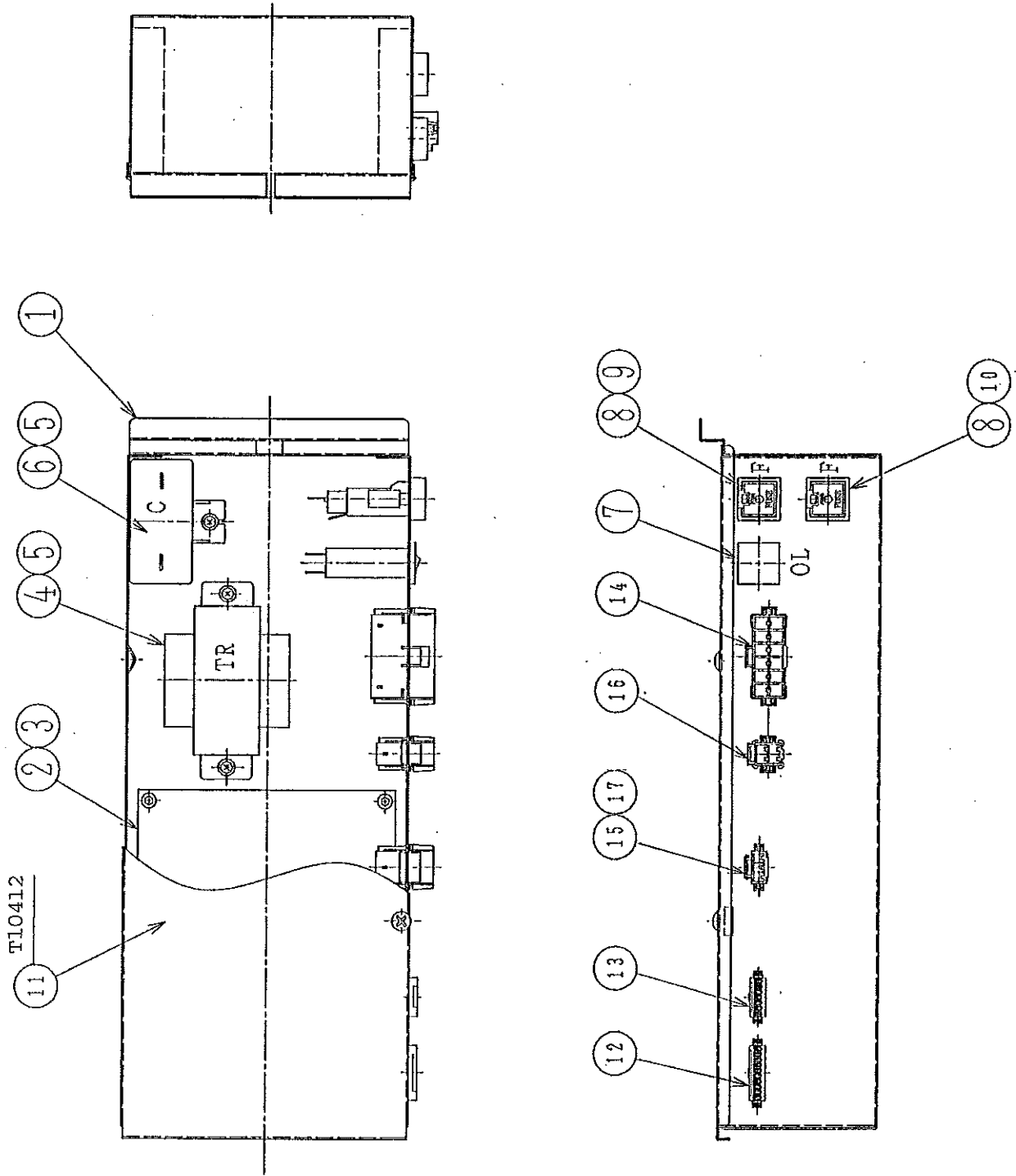
MODEL: DCM-120FE TITLE: D. WATER CIRCUIT							
INDEX NO.	DESCRIPTION	MATERIAL OR MODEL NUMBER	PART NUMBER	REQ'D NUMBER			
				A-1 B-1 B-2	B-3	B-4 C-1 C-2	D-0 E-0
1	PIPE - WATER SUPPLY	S.S	344566G01	1	1	1	1
2	PACKING	SI. R	413854-02	2	2	2	2
3	WATER VALVE	J246-198E	455812-01	2	2	2	2
4	BRACKET (A) - VALVE	S.S	455059-01	1	1	1	1
5	BRACKET (B) - VALVE	S.S	455047-01	1	1	1	1
6	COVER - RESERVOIR INLET	SI. R	415094-01	1	1	1	1
7	RESERVOIR	ABS	217620-01	1	1	1	x 1
			217620-02				o 1
8	COVER - RESERVOIR	ABS	217621-01	1	1	1	x 1
			217621-02				o 1
9	FLOAT SWITCH	TW-1221-101	435490-01	1	1	1	1
10	DRAIN PIPE	EPDM	454788-01	1	1	1	1
11	WATER PIPE	S.S	457277-01	1	1	1	1
12	JOINT HOSE	SILICONE	457276-01	1	1	1	1
13	CLIP BAND (A)	T14	423866-01	1	1	1	1
14	CLIP BAND (B)	T19	423866-02	1	1	1	1
15	CAP - DRAIN	C3602BD	454963-01	1	1	1	1
16	PACKING - DRAIN	SY. R	418071-03	1	1	1	1
17	PIPE - DRAIN	S.S	454964G01	1	1	1	1
18	PIPE - OVERFLOW	EPDM	342085-01	1	1	1	1
19	CLAMP	SK-25	435934-07	1	1	1	1
20	PIPE - TANK	SILICONE	455588-01	1	1	1	1
21	HOSE	7716-1216, L=350	109498-35	1	1	1	1
22	CLAMP	SK-15	435934-03	1	1	1	1
23	CLIP BAND	T15	423866-04	4	4	4	4
24	HOSE	7716-1216, L=125	109498-28	1	1	1	1
25	TIE	CV-250	7920-0011	2	2	2	2
26	TIE	CV-150	7920-0003	1	1	1	1
27	SILICON PLATE	SI. R	464444-01			o 1	1
28	PACKING FILTER		4X1497G02			o 1	1

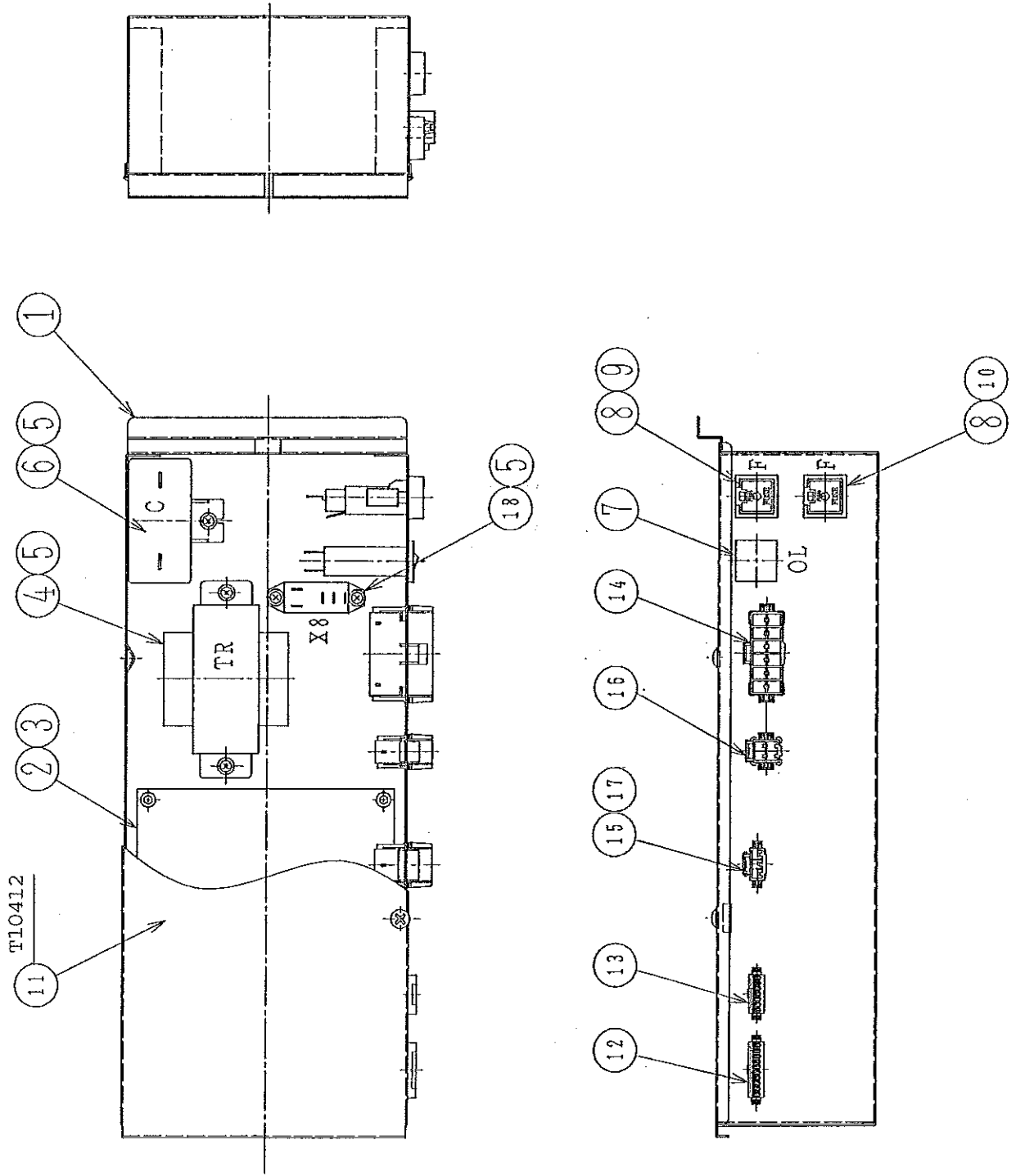
HE

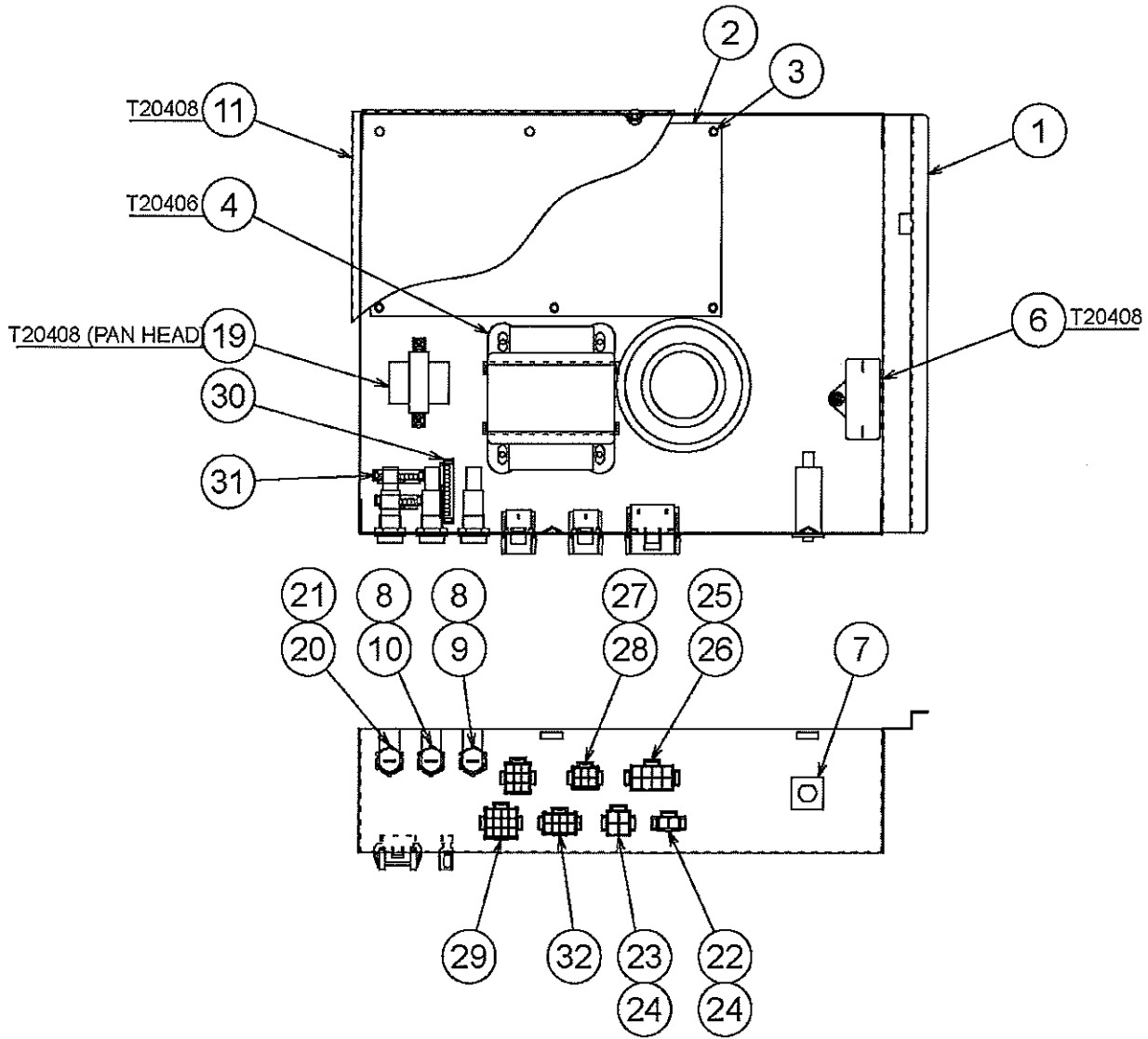
MODEL: DCM-120FE		TITLE: D. WATER CIRCUIT					
INDEX NO.	DESCRIPTION	MATERIAL OR MODEL NUMBER	PART NUMBER	REQ'D NUMBER			
				F-1 G-0	G-1		
1	PIPE - WATER SUPPLY	S.S	344566G01	-			
			356247G01	1	1		
2	PACKING	NBR	4X1497G01		2		
		SI. R	413854-02	2	-		
3	WATER VALVE	J246-198E	455812-01	2	2		
4	BRACKET (A) - VALVE	S.S	455059-01	-			
			457275-01	1	1		
5	BRACKET (B) - VALVE	S.S	455047-01	1	1		
6	COVER - RESERVOIR INLET	SI. R	415094-01	1	1		
7	RESERVOIR	ABS	217620-02	1	1		
8	COVER - RESERVOIR	ABS	217621-02	1	1		
9	FLOAT SWITCH	TW-1221-101	435490-01	1	1		
10	DRAIN PIPE	EPDM	454788-01	1	1		
11	WATER PIPE	S.S	457277-01	1	1		
12	JOINT HOSE	SILICONE	457276-01	1	1		
13	CLIP BAND (A)	T14	423866-01	1	1		
14	CLIP BAND (B)	T19	423866-02	1	1		
15	CAP - DRAIN	C3602BD	454963-01	-			
16	PACKING - DRAIN	SY. R	418071-03	-			
17	PIPE - DRAIN	S.S	454964G01	-			
18	PIPE - OVERFLOW	EPDM	342085-01	1	1		
19	CLAMP	SK-25	435934-07	1	1		
20	PIPE - TANK	SILICONE	455588-01	-			
		S.S	467797-01	1	1		
21	HOSE	7716-1216, L=350	109498-35	-			
22	CLAMP	SK-15	435934-03	2	2		
23	CLIP BAND	T15	423866-04	1	1		
24	HOSE	7716-1216, L=125	109498-28	-			
25	TIE	CV-250	7920-0011	1	1		
26	TIE	CV-150	7920-0003	1	1		
27	SILICON PLATE	SI. R	464444-01	1	1		
28	PACKING - FILTER		4X1497G02	1	1		
29	WATER VALVE	J241-809	468655-01	1	1		

HE

MODEL: DCM-120FE				TITLE: D. WATER CIRCUIT			
INDEX NO.	DESCRIPTION	MATERIAL OR MODEL NUMBER	PART NUMBER	REQ'D NUMBER			
				F-1 G-0	G-1		
30	COVER - WV	ABS	332416-01	1	1		
31	BRACKET - DRAIN	S.S	355587-01	1	1		
32	DRAIN PIPE	EPDM	460263-01	1	1		
33	DRAIN HOSE	SI.R	355588-01	1	1		
34	CLIP BAND (C)	T12	423866-03	1	1		
35	INSULATION TUBE	7762-1626 L=155	113786-37	1	1		
36	HOSE (N)	L=340	334235-10	1	1		
37	INSULATION TUBE	7762-1626 L=260	113786-36	1	1		
38	INSULATION TUBE	7762-0718 L=120	113786-39	1	1		
39	INSULATION TUBE	7762-1020 L=280	113786-40	1	1		
40	INSULATION TUBE	7762-2030 L=200	113786-41	1	1		
41	INSULATION TUBE	7730-2030 L=170	113786-35	1	1		
42	SILICON HOSE	7730-1114 L=30	113786-44	1	1		
43	JOINT – WATER SUPPLY	SI. R	467796-01	1	1		
44	TIE	CV-100	7920-0002	4	4		
45	CLAMP	SK-13	435934-01	1	1		







HE

MODEL: DCM-120FE		TITLE: E. CONTROL BOX ASSY					
INDEX NO.	DESCRIPTION	MATERIAL OR MODEL NUMBER	PART NUMBER	REQ'D NUMBER			
				H-1	H-2 J-0	J-1	J-2
1	CONTROL BOX	G.S	230792-03	1	x 1		
		G.S	230792-01		o 1	1	1
2	CONTROLLER BOARD	H2AE001C01	455655-01	1	1	1	1
3	BOARD SUPPORT	KGLS-6S	414929-01	4	4	4	4
4	TRANSFORMER	TR7990, AC100V	450438-01	1	1	1	1
5	TAPPING SCREW	3x8	431415-01	3	3	3	3
6	CAPACITOR	CME25B146DY	450456-01	1	1	1	1
7	OVERLOAD	W28XQ1A-3, 3A	440972-02	1	1	1	1
8	FUSE HOLDER	F-150-BB, 250V 10A	438024-01	2	2	2	2
9	FUSE	FGB0, 10A	406519-08	1	1	1	1
10	FUSE	FGB0, 3A	406519-04	1	1	1	1
11	COVER - CONTROL BOX	G.S	341413-01	1	x 1		
		G.S	343420-01		o 1	1	1
12	RECEPTACLE HOUSING	SMP-10V-NC	433787-02	1	1	1	1
13	RECEPTACLE HOUSING	SMP-07V-NC	433787-11	1	1	1	1
14	RECEPTACLE HOUSING	VLR-12V	454247-06	1	1	1	1
15	RECEPTACLE HOUSING	VLR-03V	454247-03	1	1	-	
16	RECEPTACLE HOUSING	VLR-04V	454247-04	1	1	1	1
17	RECEPTACLE HOUSING	VLR-06V	454247-05			1	1

HE

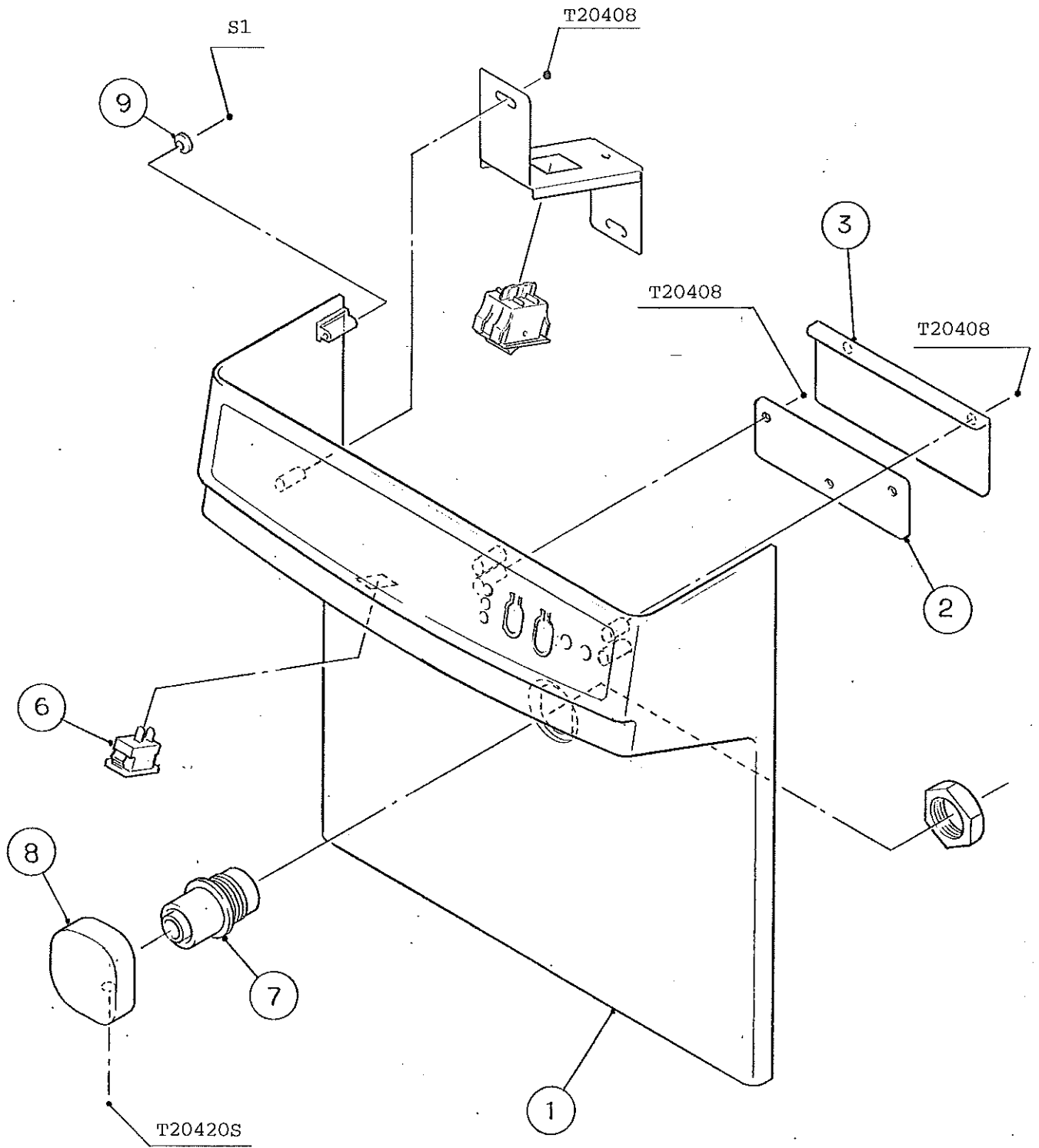
MODEL: DCM-120FE		TITLE: E. CONTROL BOX ASSY					
INDEX NO.	DESCRIPTION	MATERIAL OR MODEL NUMBER	PART NUMBER	REQ'D NUMBER			
				J-3	J-4	J-5	K-1 A-0
1	CONTROL BOX	G.S	230792-01	1	1	1	1
2	CONTROLLER BOARD	H2AE001C01	455655-01	1	1	-	
		H2AE001C02	455655-02			1	1
3	BOARD SUPPORT	KGLS-6S	414929-01	4	4	4	4
4	TRANSFORMER	TR7990, AC100V	450438-01	1	1	1	1
5	TAPPING SCREW	3x8	431415-01	3	3	3	5
6	CAPACITOR	CME25B146DY	450456-01	1	1	1	1
7	OVERLOAD	W28XQ1A-3, 3A	440972-02	1	1	1	1
8	FUSE HOLDER	F-150-BB, 250V 10A	438024-01	2	2	2	2
9	FUSE	FGB0, 10A	406519-08	1	1	1	1
10	FUSE	FGB0, 3A	406519-04	1	1	1	1
11	COVER - CONTROL BOX	G.S	343420-01	1	1	1	1
12	RECEPTACLE HOUSING	SMP-10V-NC	433787-02	1	1	1	1
13	RECEPTACLE HOUSING	SMP-07V-NC	433787-11	1	1	1	1
14	RECEPTACLE HOUSING	VLR-12V	454247-06	1	1	1	1
15							
16	RECEPTACLE HOUSING	VLR-04V	454247-04	1	1	1	1
17	RECEPTACLE HOUSING	VLR-06V	454247-05	1	1	1	1
18	POWER RELAY	G2R-1-T, AC100V	430173-01			1	1

HE

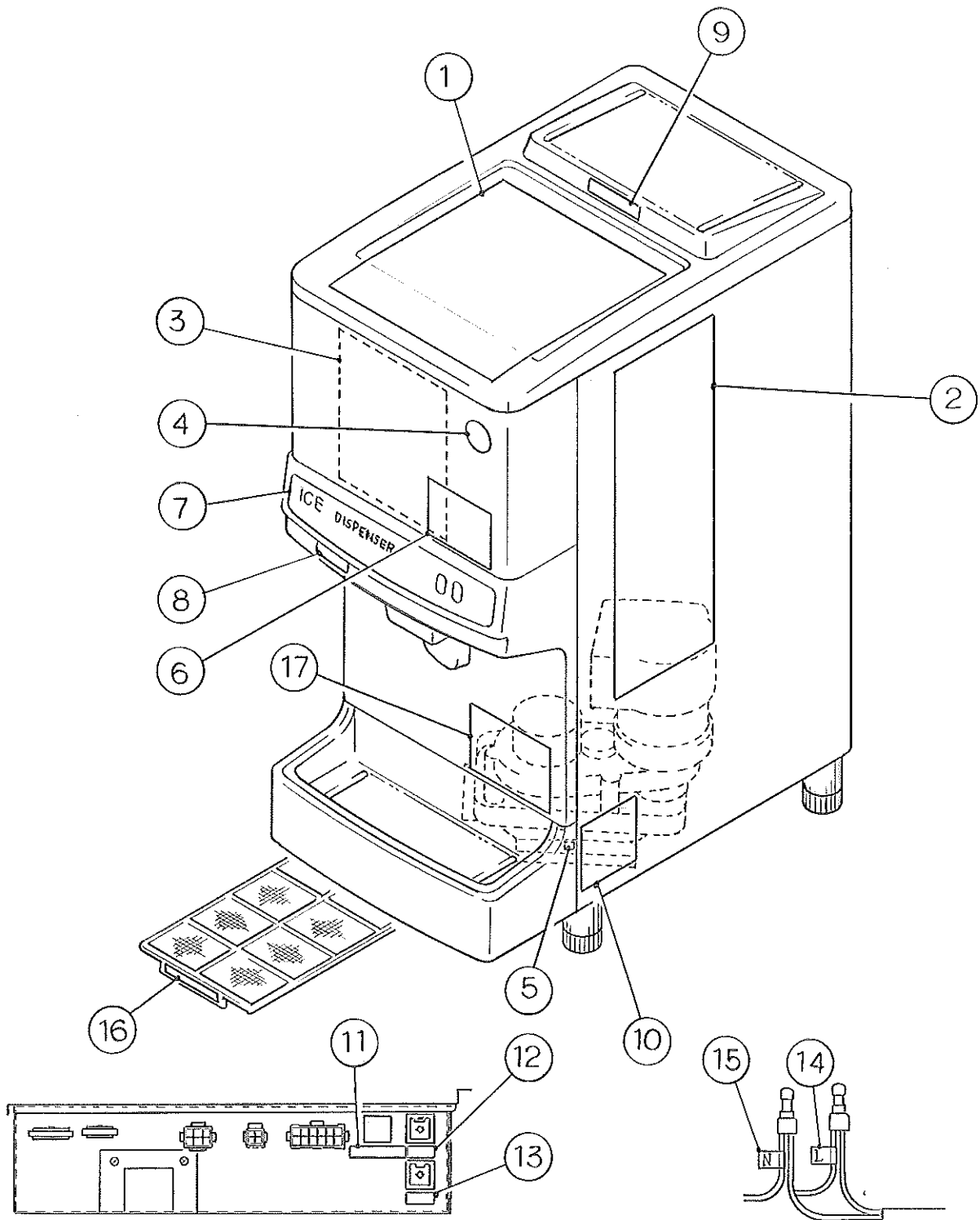
MODEL: DCM-120FE		TITLE: E. CONTROL BOX ASSY					
INDEX NO.	DESCRIPTION	MATERIAL OR MODEL NUMBER	PART NUMBER	REQ'D NUMBER			
				A-1 B-1 B-2	B-3	B-4 C-1 C-2	D-0 E-0
1	CONTROL BOX	G.S	230792-01	1	1	1	1
2	CONTROLLER BOARD	H2AE001C02	455655-02	x 1			
		H2AE001C03	461556-01	o 1	1	x 1	
		HS2003024	464959-01			o 1	1
3	BOARD SUPPORT	KGLS-6S	414929-01	4	4	4	4
4	TRANSFORMER	TR7990, AC100V	450438-01	1	1	1	1
5	TAPPING SCREW	3x8	431415-01	3	3	3	3
6	CAPACITOR	CME25B146DY	450456-01	1	1	1	1
7	OVERLOAD	W28XQ1A-3, 3A	440972-02	1	1	1	1
8	FUSE HOLDER	F-150-BB, 250V 10A	438024-01	2	2	2	2
9	FUSE	FGB0, 10A	406519-08	1	1	1	1
10	FUSE	FGB0, 3A	406519-04	1	1	1	1
11	COVER - CONTROL BOX	G.S	343420-01	1	1	1	1
12	RECEPTACLE HOUSING	SMP-10V-NC	433787-02	1	1	1	1
13	RECEPTACLE HOUSING	SMP-07V-NC	433787-11	1	1	1	1
14	RECEPTACLE HOUSING	VLR-12V	454247-06	1	1	1	1
15							
16	RECEPTACLE HOUSING	VLR-04V	454247-04	1	1	1	1
17	RECEPTACLE HOUSING	VLR-06V	454247-05	1	1	1	1
18	POWER RELAY	G2R-1-T, AC100V	430173-01	1	1	1	1

HE

MODEL: DCM-120FE		TITLE: E. CONTROL BOX ASSY					
INDEX NO.	DESCRIPTION	MATERIAL OR MODEL NUMBER	PART NUMBER	REQ'D NUMBER			
				F-1 G-0	G-1		
1	CONTROL BOX	G.S	230792-01	-			
			248335G01	1	1		
2	CONTROLLER BOARD	HS2003024	464959-01	-			
		HO4081-100A2	469501-12	1	1		
3	BOARD SUPPORT	KGLS-6S	414929-01	6	6		
4	TRANSFORMER	TR7990, AC100V	450438-01	-			
		100V/24V.11V	468658-01	1	1		
5	TAPPING SCREW	3x8	431415-01	-			
6	CAPACITOR	CME25B146DY	450456-01	-			
		CME25B805DX	457870-01	1	1		
7	OVERLOAD	W28XQ1A-3, 3A	440972-02	-			
		W28XQ1A-1, 1A	440972-06	1	1		
8	FUSE HOLDER	F-150-BB, 250V 10A	438024-01	-			
		F-400-01A1	P00084-01	2	2		
9	FUSE	FGB0, 10A	406519-08	1	1		
10	FUSE	FGB0, 3A	406519-04	1	1		
11	COVER - CONTROL BOX	G.S	343420-01	-			
			366059-01	1	1		
12	RECEPTACLE HOUSING	SMP-10V-NC	433787-02	-			
13	RECEPTACLE HOUSING	SMP-07V-NC	433787-11	-			
14	RECEPTACLE HOUSING	VLR-12V	454247-06	-			
15							
16	RECEPTACLE HOUSING	VLR-04V	454247-04	-			
17	RECEPTACLE HOUSING	VLR-06V	454247-05	-			
18	POWER RELAY	G2R-1-T, AC100V	430173-01	-			
19	TRANSFORMER	0-230V/0-6.5V	469501F01	1	1		
20	FUSE HOLDER	F-400-01A2	P00083-01	1	1		
21	FUSE	FF5A	465622-01	1	1		
22	RECEPTACLE HOUSING	VLR-02V	454247-02	1	1		
23	RECEPTACLE HOUSING	VLR-04V	454247-04	1	1		

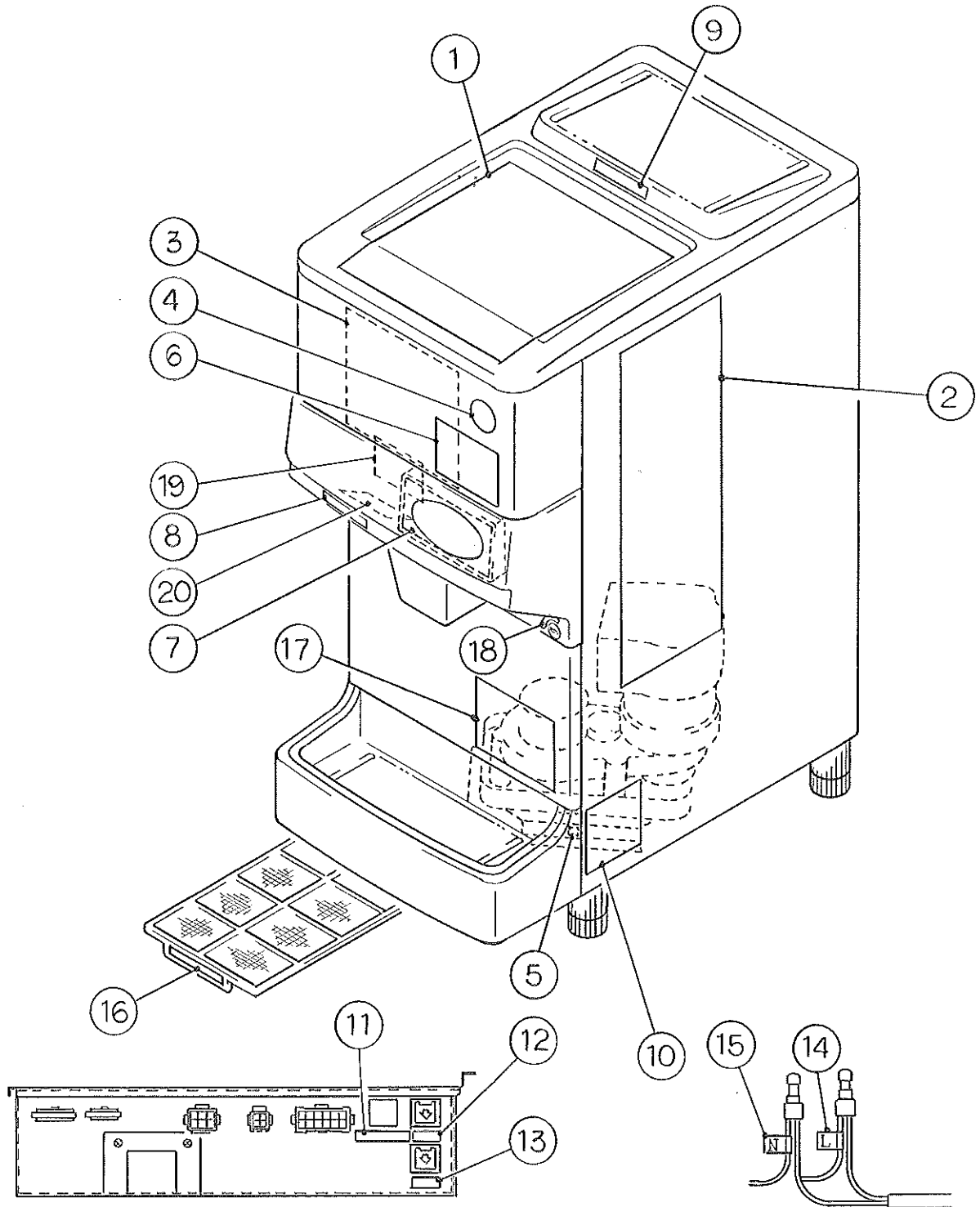


FASTENER
S1 - FLAT HEAD TAPPING SCREW,
M4x8



CONTROL BOX

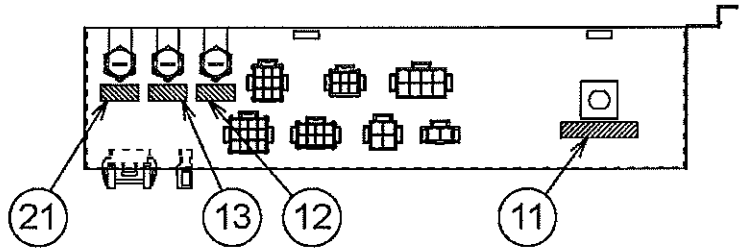
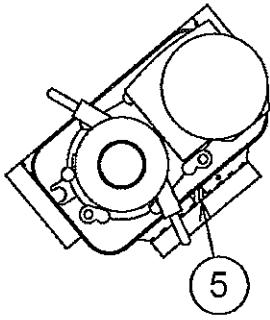
TERMINAL



CONTROL BOX

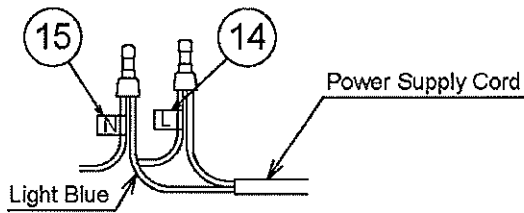
TERMINAL

パ
イ
ソ
リ
ス
ト
用
書

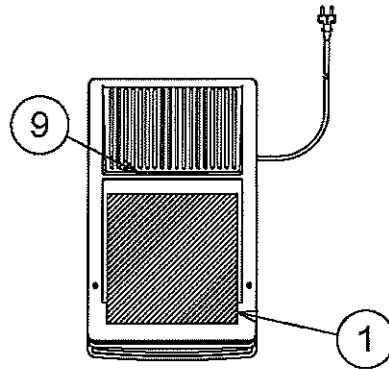


Control Box Detail (in Machine Compartment)

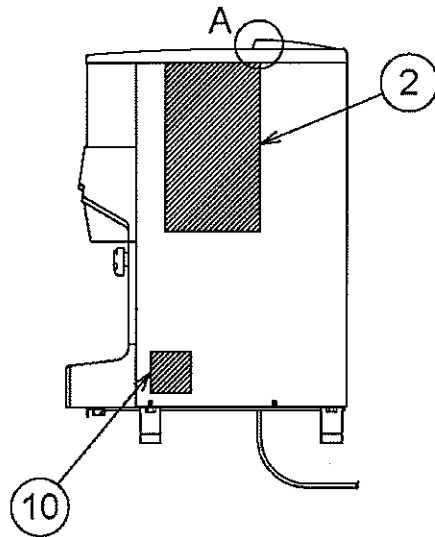
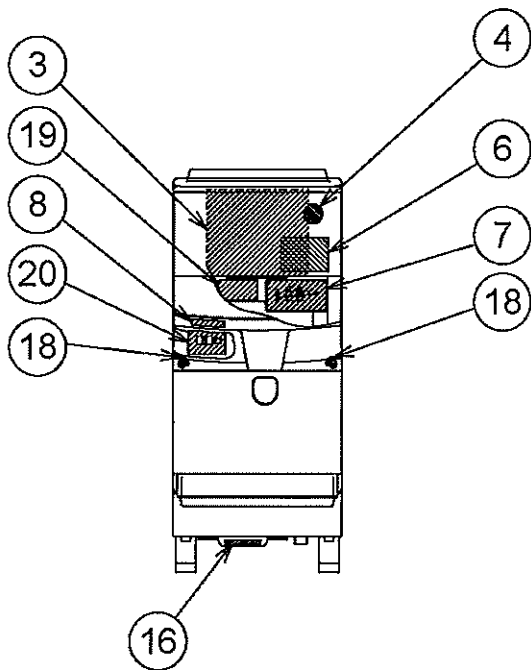
Label - Earth (B) Layout
(in Machine Compartment)



Label - Terminal Layout
(in Machine Compartment)



A



HE

MODEL: DCM-120FE		TITLE: G. LABEL LOCATION					
INDEX NO.	DESCRIPTION	MATERIAL OR MODEL NUMBER	PART NUMBER	REQ'D NUMBER			
				H-1	H-2 J-0	J-1	J-2
1	INSTRUCTION SHEET	PAPER	229882-01	1	1	-	
		PAPER	231040-01			1	1
2	INSTRUCTION LABEL	PES FILM	229883-01	1	1	-	
		PES FILM	231039-01			1	1
3	WIRING LABEL	PVC FILM	342346-01	1	1	1	1
4	LABEL - PENGUIN	PES FILM	451262-01	1	x 1		
		PESFILM	454387-02		o 1	1	1
5	LABEL - EARTH	PES FILM	450452-02	1	1	1	1
6	LABEL - EFFICIENT USE	PETP FILM	425319-01	1	1	1	1
7	OPERATION LABEL	PES FILM	342347-01	1	1	-	
		PES FILM	343631-01			1	1
8	LABEL - POWER SUPPLY	PES FILM	455726-01	1	1	-	
		PES FILM	456670-01			1	1
9	LABEL - FAN MOTOR	PETP FILM	425320-01	1	1	1	1
10	NAMEPLATE	PES FILM	N/A	1	1	1	1
11	LABEL - RESET	PETP FILM	425326-01	1	1	1	1
12	LABEL - FUSE (10A)	PES FILM	455750-01	1	1	1	1
13	LABEL - FUSE (3A)	PES FILM	455750-02	1	1	1	1
14	LABEL - TERMINAL (L)	PVC FILM	452379-01	1	1	1	1
15	LABEL - TERMINAL (N)	PVC FILM	452379-02	1	1	1	1
16	LABEL - AIR FILTER	PES FILM	452799-01	1	1	1	1
17	LABEL - DRAIN	PES FILM	455729-01	1	1	1	1
18	LABEL - OPEN & SHUT	PES FILM	456669-01			2	2
19	LABEL - UNPLUG	PES FILM	456751-01			1	1
20	CONTROL LABEL	PES FILM	456671-01			1	1

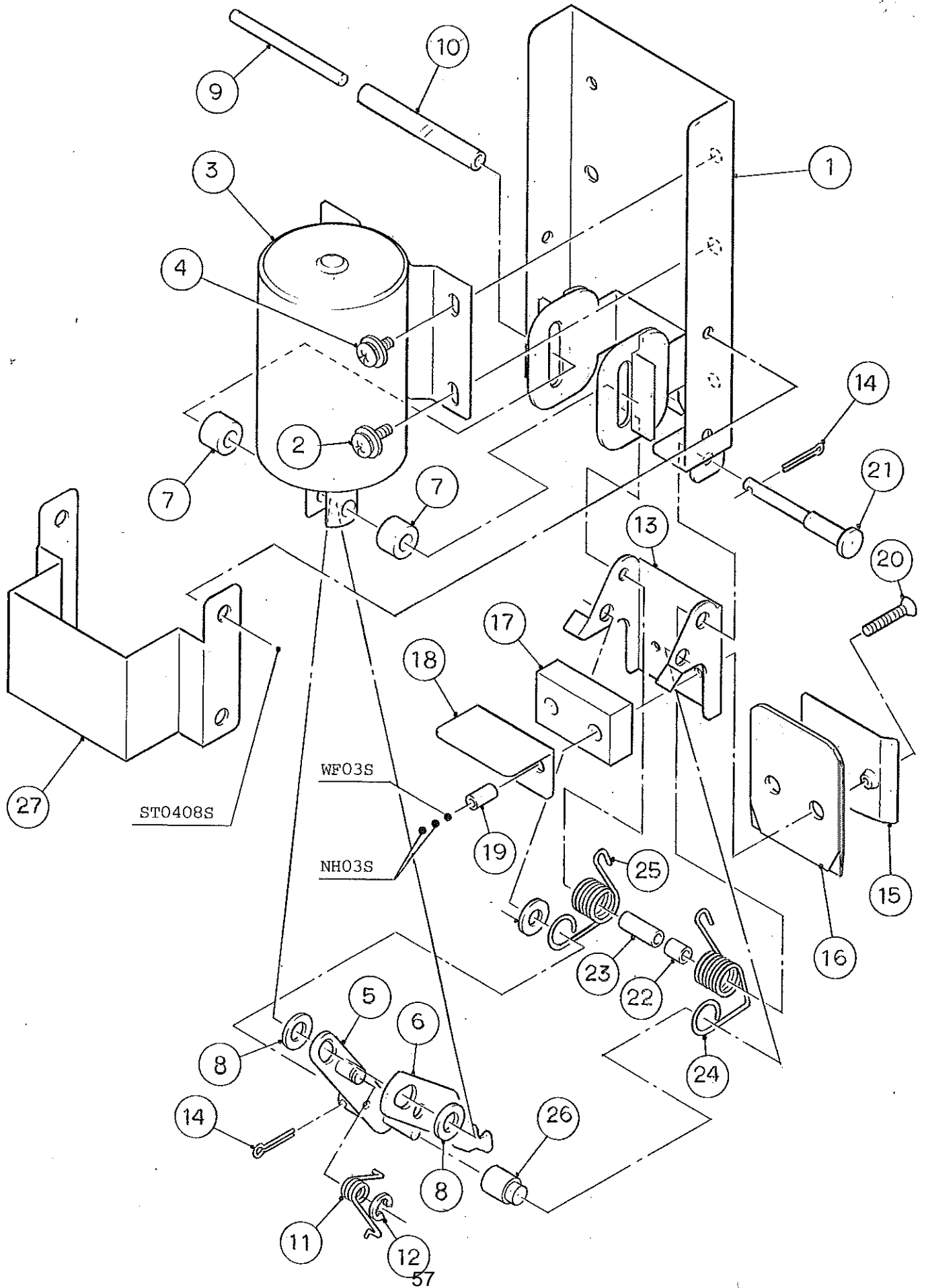
HE

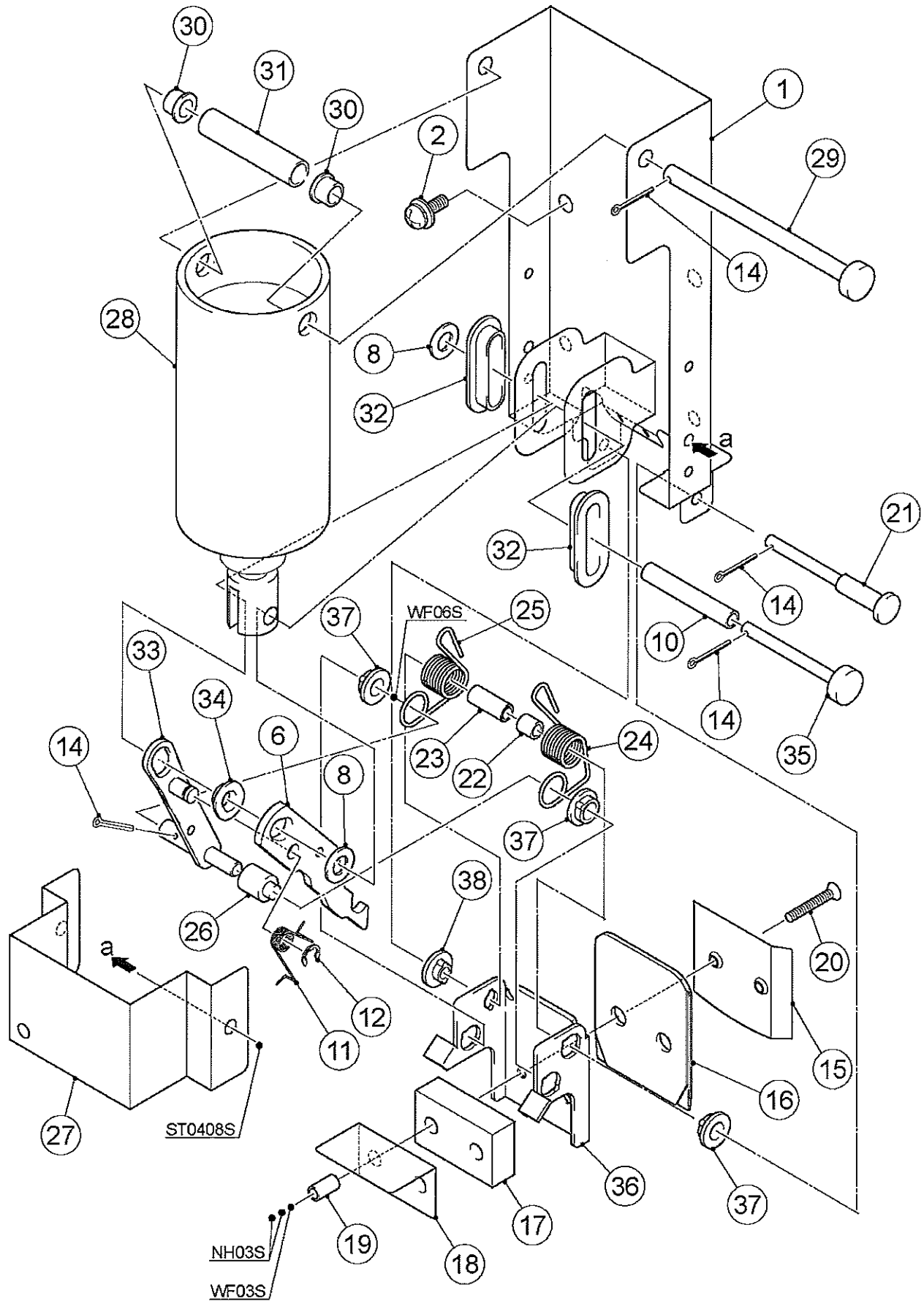
MODEL: DCM-120FE TITLE: G. LABEL LOCATION							
INDEX NO.	DESCRIPTION	MATERIAL OR MODEL NUMBER	PART NUMBER	REQ'D NUMBER			
				F-1 G-0	G-1		
1	INSTRUCTION SHEET	PAPER	231040-01	-			
			250983-01	1	1		
2	INSTRUCTION LABEL	PES FILM	231039-01	-			
			250984-01	1	1		
3	WIRING LABEL	PVC FILM	342346-01	-			
			368141-01	1	1		
4	LABEL - PENGUIN	PESFILM	454387-02	1	1		
5	LABEL - EARTH	PES FILM	450452-02	1	1		
6	LABEL - EFFICIENT USE	PETP FILM	425319-01	1	1		
7	OPERATION LABEL	PES FILM	343631-01	-			
			368138-01	1	1		
8	LABEL - POWER SUPPLY	PES FILM	456670-01	1	1		
9	LABEL - FAN MOTOR	PETP FILM	425320-01	1	x 1		
			457742-01		o 1		
10	NAMEPLATE	PES FILM	N/A	1	1		
11	LABEL - RESET	PETP FILM	425326-01	1	1		
12	LABEL - FUSE (10A)	PES FILM	455750-01	1	1		
13	LABEL - FUSE (3A)	PES FILM	455750-02	1	1		
14	LABEL - TERMINAL (L)	PVC FILM	452379-01	1	1		
15	LABEL - TERMINAL (N)	PVC FILM	452379-02	1	1		
16	LABEL - AIR FILTER	PES FILM	452799-01	1	1		
17	LABEL - DRAIN	PES FILM	455729-01	-			
18	LABEL - OPEN & SHUT	PES FILM	456669-01	2	2		
19	LABEL - UNPLUG	PES FILM	456751-01	1	1		
20	CONTROL LABEL	PES FILM	456671-01	1	1		
21	LABEL - FUSE (5A)	PES FILM	455750-03	1	1		

HE
DCM-120FE

H. SHUTTER ASSY

(A-0)(A-1)(B-1)(B-2)
(J-4)(J-5)(K-1)
(J-3)(J-2)(J-1)
(H-1)(H-2)(J-0)





HE

MODEL: DCM-120FE TITLE: H. SHUTTER ASSY							
INDEX NO.	DESCRIPTION	MATERIAL OR MODEL NUMBER	PART NUMBER	REQ'D NUMBER			
				J-3	J-4	J-5	K-1 A-0
1	BRACKET - SOLENOID	S.S	341414G01	1	1	1	1
2	SCREW	S.S, 4x12	434438-02	4	4	4	4
3	SOLENOID	SSD-18	454755-01	1	1	1	1
4	SCREW	S.S, 4x8	434838-01	2	2	2	2
5	SHAFT	S.S	441645G01	1	1	1	1
6	HOOK - SHUTTER	S.S	438406-02	1	1	1	1
7	COLLAR (B)	ABS	432524-02	2	2	2	2
8	SPACER	ABS	454943-01	2	2	2	2
9	SHAFT (D)	S.S	452491-02	1	1	1	1
10	TUBE	L=52	451284-04	1	1	1	1
11	SPRING	S.S	411532-01	1	1	1	1
12	"E" RING	S.S, 4	721S-0004	1	1	1	1
13	STOPPER - SHUTTER	S.S	451280-01	1	1	1	1
14	SPLIT PIN	S.S, 1.6x12	711SP1612	2	2	2	2
15	PLATE (A1) - SHUTTER	S.S	414756-01	1	1	1	1
16	PLATE (B) - SHUTTER	EPDM	423948-01	1	1	1	1
17	PLATE (C) - SHUTTER	SY. R FOAM	419150-01	1	1	1	1
18	PLATE (D) - SHUTTER	S.S	419151-01	1	1	1	1
19	COLLAR (C) - SHUTTER	S.S	411539-03	2	2	2	2
20	SCREW	3x20	441581-01	2	2	2	2
21	SHAFT (B)	S.S	454941-01	1	1	1	1
22	TUBE	L=6	451284-05	1	1	1	1
23	COLLAR	S.S	454942-01	1	1	1	1
24	SPRING (RIGHT)	S.S	452502-01	1	1	1	1
25	SPRING (LEFT)	S.S	452503-01	1	1	1	1
26	SHAFT (B2) - SHUTTER	S.S	432520-02	1	1	1	1
27	COVER	S.S	341411-01	1	1	1	1

HE

MODEL: DCM-120FE TITLE: H. SHUTTER ASSY							
INDEX NO.	DESCRIPTION	MATERIAL OR MODEL NUMBER	PART NUMBER	REQ'D NUMBER			
				A-1 B-1 B-2	B-3	B-4 C-1 C-2	D-0 E-0
1	BRACKET - SOLENOID	S.S	341414G01	1	-		
			351479G01		1	1	1
2	SCREW	S.S, 4x12	434438-02	4	4	4	4
3	SOLENOID	SSD-18	454755-01	1	-		
4	SCREW	S.S, 4x8	434838-01	2	-		
5	SHAFT	S.S	441645G01	1	-		
6	HOOK - SHUTTER	S.S	438406-02	1	1	1	1
7	COLLAR (B)	ABS	432524-02	2	-		
8	SPACER	ABS	454943-01	2	2	2	2
9	SHAFT (D)	S.S	452491-02	1	-		
10	TUBE	L=52	451284-04	1	-		
			451284-06		1	1	1
11	SPRING	S.S	411532-01	1	1	1	1
12	"E" RING	S.S, 4	721S-0004	1	1	1	1
13	STOPPER - SHUTTER	S.S	451280-01	1	-		
14	SPLIT PIN	S.S, 1.6x12	711SP1612	2	4	4	4
15	PLATE (A1) - SHUTTER	S.S	414756-01	1	1	1	1
16	PLATE (B) - SHUTTER	EPDM	423948-01	1	1	1	1
17	PLATE (C) - SHUTTER	SY. R FOAM	419150-01	1	1	1	1
18	PLATE (D) - SHUTTER	S.S	419151-01	1	1	1	1
19	COLLAR (C) - SHUTTER	S.S	411539-03	2	2	2	2
20	SCREW	3x20	441581-01	2	2	2	2
21	SHAFT (B)	S.S	454941-01	1	-		
			462561-01		1	1	1
22	TUBE	L=6	451284-05	1	1	1	1
23	COLLAR	S.S	454942-01	1	1	1	1
24	SPRING (RIGHT)	S.S	452502-01	1	1	1	1
25	SPRING (LEFT)	S.S	452503-01	1	1	1	1
26	SHAFT (B2) - SHUTTER	S.S	432520-02	1	1	1	1
27	COVER	S.S	341411-01	1	1	1	1
28	SOLENOID	SSD-18T	462557-01		1	1	1
29	SHAFT - SOLENOID		462257-01		1	1	1

HE

MODEL: DCM-120FE TITLE: H. SHUTTER ASSY							
INDEX NO.	DESCRIPTION	MATERIAL OR MODEL NUMBER	PART NUMBER	REQ'D NUMBER			
				F-1 G-0	G-1		
1	BRACKET - SOLENOID	S.S	351479G01	1	1		
2	SCREW	S.S, 4x12	434438-02	4	4		
3							
4							
5							
6	HOOK - SHUTTER	S.S	438406-02	1	1		
7							
8	SPACER	ABS	454943-01	2	2		
9							
10	TUBE	L=52	451284-06	1	1		
11	SPRING	S.S	411532-01	1	1		
12	"E" RING	S.S, 4	721S-0004	1	1		
13							
14	SPLIT PIN	S.S, 1.6x12	711SP1612	4	4		
15	PLATE (A1) - SHUTTER	S.S	414756-01	1	1		
16	PLATE (B) - SHUTTER	EPDM	423948-01	1	1		
17	PLATE (C) - SHUTTER	SY. R FOAM	419150-01	1	1		
18	PLATE (D) - SHUTTER	S.S	419151-01	1	1		
19	COLLAR (C) - SHUTTER	S.S	411539-03	2	2		
20	SCREW	3x20	441581-01	2	2		
21	SHAFT (B)	S.S	462561-01	1	1		
22	TUBE	L=6	451284-05	1	1		
23	COLLAR	S.S	454942-01	1	1		
24	SPRING (RIGHT)	S.S	452502-01	1	1		
25	SPRING (LEFT)	S.S	452503-01	1	1		
26	SHAFT (B2) - SHUTTER	S.S	432520-02	1	1		
27	COVER	S.S	341411-01	1	1		
28	SOLENOID	SSD-18T	462557-01	x 1			
			462557-02	o 1	1		
29	SHAFT - SOLENOID		462257-01	1	1		
30	BUSH		462558-01	x 2			
			462558-02	o 2	2		
31	COLLAR - SOLENOID		462559-01	1	1		

HE
DCM-120FE

J. COVER ASSY - BIN TOP

(A-0)(A-1)(B-1)(B-2)(B-3)-
(J-4)(J-5)(K-1)
(J-3)(J-2)(J-1)
(H-1)(H-2)(J-0)

