



# First Choice Group

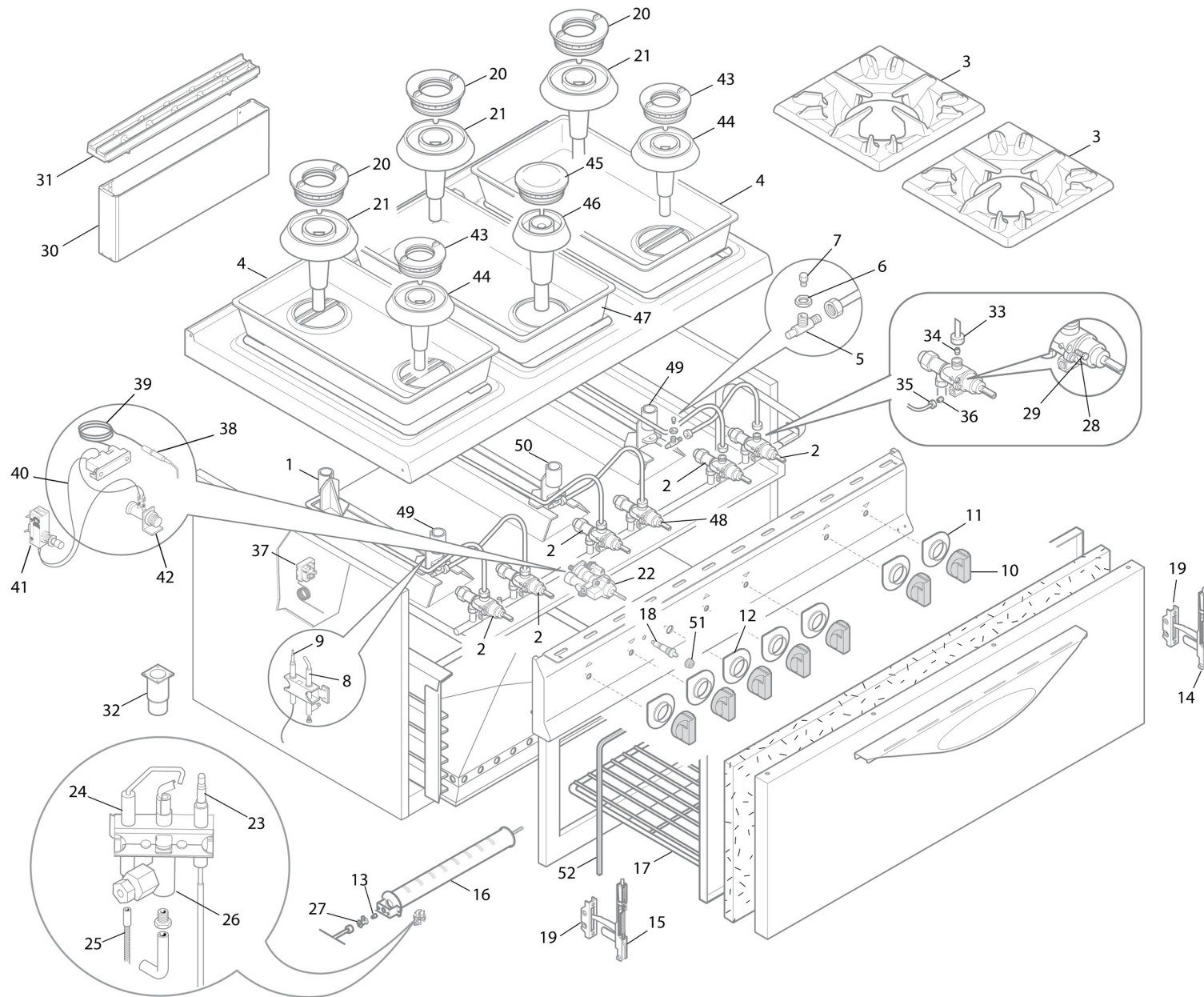
SPARE PARTS DIAGRAM FOR



**BERTO'S**<sup>®</sup>  
the best catering equipment

Oven Range  
SG9F6+T

First Choice Group  
Blakeney Way, Kingswood Lakeside  
Cannock, Staffs, WS11 8LD  
TEL: 01543 577778 FAX: 01543504141  
Email: [enquires@firstchoice-cs.co.uk](mailto:enquires@firstchoice-cs.co.uk)  
Web: [www.firstchoice-cs.co.uk](http://www.firstchoice-cs.co.uk)



| Position of item | Code     | Nr. of pieces | Description   |
|------------------|----------|---------------|---|
| 1                | 35912600 | 3             | BURNER SUPPORT 12 KW  |
| 2                | 31273600 | 5             | VALVE PEL21S, BYPASS 55   |
| 3                | 38856700 | 6             | 1-BURNER MATT GRILL FOR LX900 - S900  |
| 4                | 35779500 | 2             | S. STEEL BOWL Ø126/126 FOR SERIES 900   |
| 5                | 32812000 | 6             | NICKEL BENT NOZZLE HOLDER FOR PIPE Ø10  |
| 6                | 32811500 | 5             | NUT FOR NOZZLE HOLDER M14 X 1   |
| 7                | 40000000 | 1             | FOR NOZZLE: INDICATE MODEL AND GAS TYPE   |
| 8                | 31291300 | 6             | ADJUSTABLE PILOT WITH 2 SEATS   |
| 9                | 22289200 | 6             | THERMOCOUPLE 600 mm   |
| 10               | 38877100 | 7             | KNOB PA66 PIN 8x6.5 A 180° - Models from 1/2010                                 |
| 11               | 38951000 | 6             | KNOB BACKING FOR GAS COOKER +PILOT FLAME  |
| 12               | 38951200 | 1             | KNOB BACKING 170° - 300° FOR GAS OVEN   |
| 13               | 40000000 | 1             | FOR NOZZLE: INDICATE MODEL AND GAS TYPE   |
| 14               | 35802100 | 1             | OVEN DOOR RIGHT HINGE - T   |
| 15               | 35802000 | 1             | CHARNIÈRE GAUCHE PORTE FOUR - T   |
| 16               | 31780500 | 1             | BURNER 12 KW TF7/900  |
| 17               | 31856100 | 1             | OVEN GRILL 1051 x 530 mm  |
| 18               | 32188300 | 1             | PIEZOELECTRIC LIGHTER+GROUND PLATE  |
| 19               | 31802500 | 2             | OVEN HINGE ROLLER HOLDER - Models from 9/2008                                   |
| 20               | 35954200 | 3             | BURNER RING 12 KW   |
| 21               | 35806800 | 3             | BURNER BODY 12 KW FOR HIGH POWER  |
| 22               | 22274700 | 1             | VALVE PEL25/ST CALIBRATED 100-260°C - Models from 3/2011                        |
| 23               | 31290100 | 1             | THERMOCOUPLE+INTERRUPTED CIRCUIT, l=1500  |
| 24               | 23297400 | 1             | OVENS SPARKPLUG   |
| 25               | 31189900 | 1             | PIEZOELECTRIC IGNITION CABLE, l= 1800   |
| 26               | 31291400 | 1             | ADJUSTABLE PILOT WITH 3 SEATS   |
| 27               | 31913500 | 1             | STRAIGHT NOZZLE HOLDER FOR PIPE Ø10   |
| 28               | 22783600 | 5             | BY-PASS Ø55 FOR VALVE PEL21S  |
| 29               | 22783500 | 1             | BY-PASS Ø45 FOR VALVE PEL21S  |
| 30               | 38784500 | 1             | OUTSIDE FLUE l=550 h=120  |
| 31               | 38857000 | 1             | FUME DISCHARGE GRID, l=540  |
| 32               | 24685000 | 4             | FOOT 2 - (out of production see 24685100 ) - Models from 6/2008 - untill 1/2014 |
| 33               | 32811800 | 13            | NUT M16 Ø10   |
| 34               | 32777300 | 13            | BRASS BICONE, Ø 10 mm   |
| 35               | 31924700 | 7             | PIPE FITTING Ø 4 mm   |
| 36               | 31777700 | 7             | BRASS BICONE Ø 4 mm   |
| 37               | 35069900 | 1             | SINGLE-PHASE SAFETY THERMOSTAT (365°C)  |
| 43               | 31954700 | 2             | BURNER RING 7 KW  |
| 44               | 31807100 | 2             | BURNER BODY 7 KW FOR HIGH POWER   |
| 45               | 31954800 | 1             | BURNER RING 3.5KW   |
| 46               | 31808200 | 1             | BURNER BODY 3.5 KW FOR HIGH POWER   |
| 47               | 35779400 | 1             | S. STEEL BOWL Ø 105/126 FOR SERIES 900  |
| 48               | 31273500 | 1             | VALVE PEL21S, BYPASS 45   |
| 49               | 31912400 | 2             | BURNER SUPPORT 7 KW   |
| 50               | 31913600 | 1             | BURNER SUPPORT 3.5 KW   |
| 51               | 32188400 | 1             | PIEZOELECTRIC CAP   |
| 52               | 31858800 | 1             | FIBREGLASS SEAL l= 1750 mm - Models from 7/2007                                 |