



First Choice
Group

SPARE PARTS DIAGRAM FOR

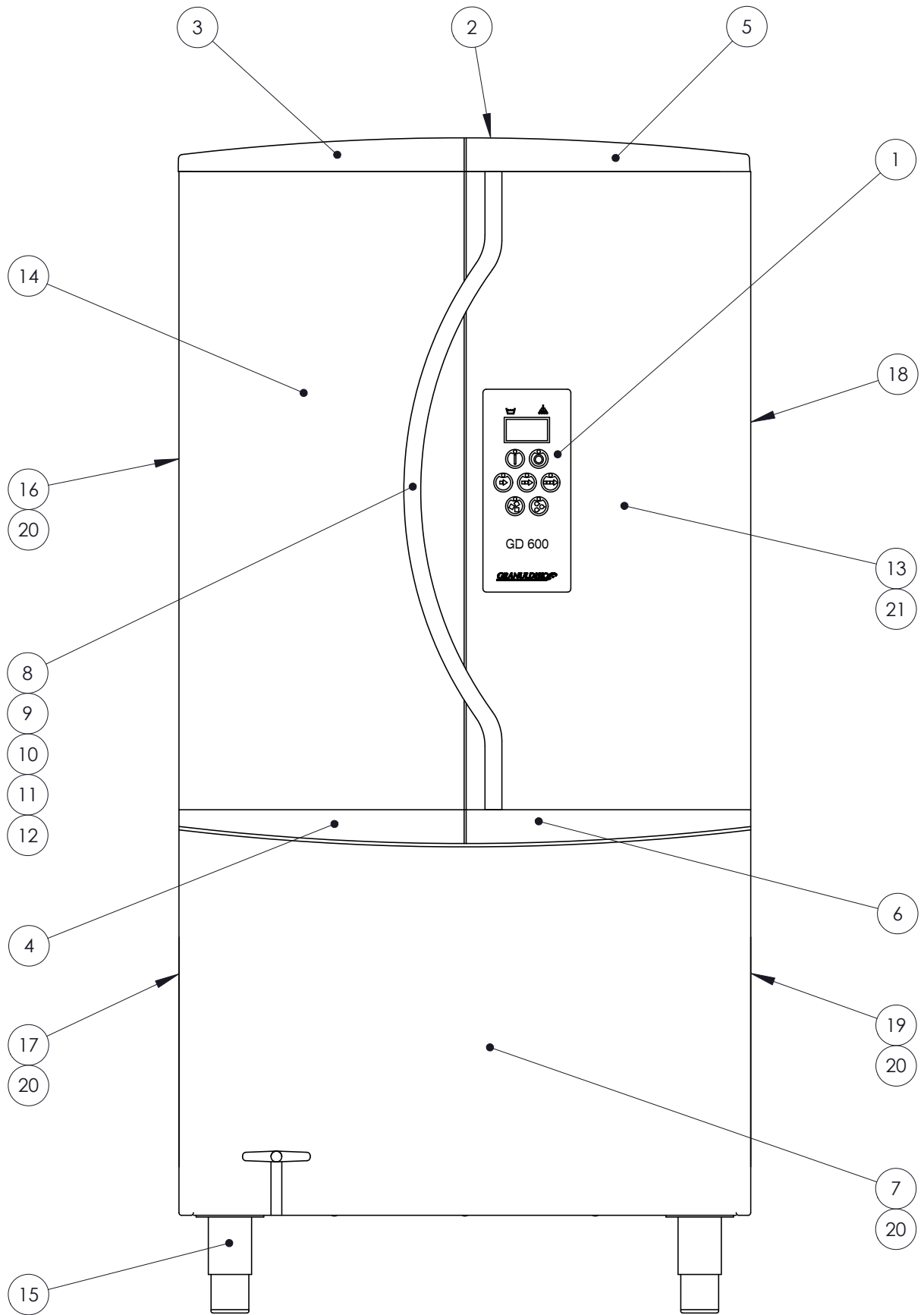
GRANULDISK[®] 

Granule Pot Washer
GD600 (2058)

First Choice Group
Blakeney Way, Kingswood Lakeside
Cannock, Staffs, WS11 8LD
TEL: 01543 577778 FAX: 01543504141
Email: enquires@firstchoice-cs.co.uk
Web: www.firstchoice-cs.co.uk

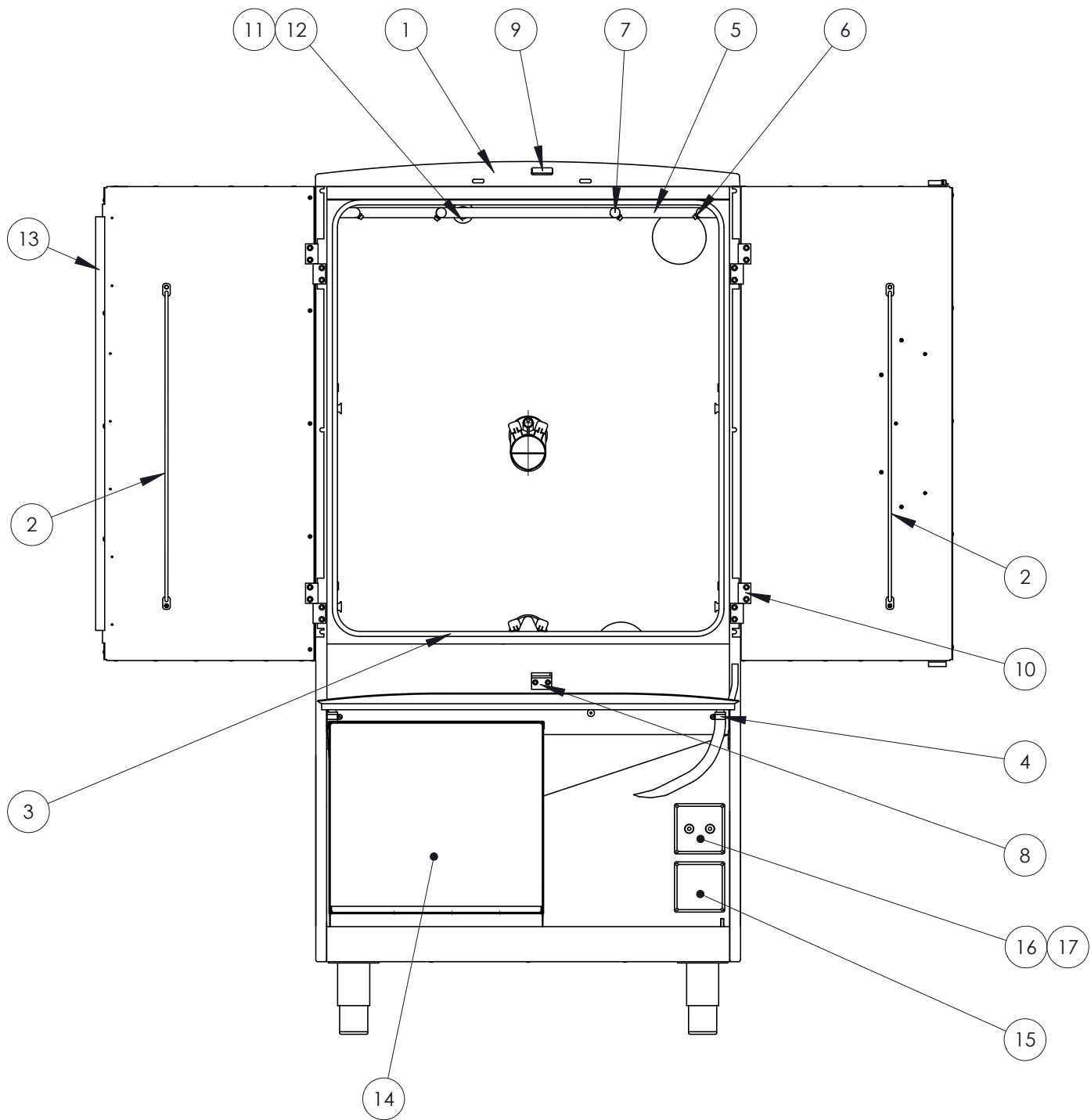
12.1 Front

Position	Part number	Description	Quantity
1	18342	Control panel, spare part kit	1
Contents:			
	18151	Panel foil	1
	18313	Panel plate	1
	18322	Circuit board control panel	1
	18746	Flange, Panel plate	1
2	12158	Screw, door cover MFS M5x50	8
3	14028	Door cover, upper left	1
4	13650	Door cover, lower left	1
5	14663	Door cover, upper right	1
6	14664	Door cover, lower right	1
7	18466	Service hatch	1
8	14659	Door handle	1
9	14660	Lock arm	2
10	10907	Peg, cylindrical	4
11	10537	Ball bearing	2
12	600 0115	Stock, door handle	2
13	18375	Dorr, right	1
14	14680	Dorr, left	1
15	600 5108	Leg	4
16	600 1138	Cover plate, upper left	1
17	6001136	Cover plate, lower left	1
18	18528	Cover plate, upper right	1
19	600 1130	Cover plate, lower right	1
20	12213	Screw, LKCS M6x16	17
21	18551	Dorr right spare part kit, see section 12.9	1



12.2 Front open

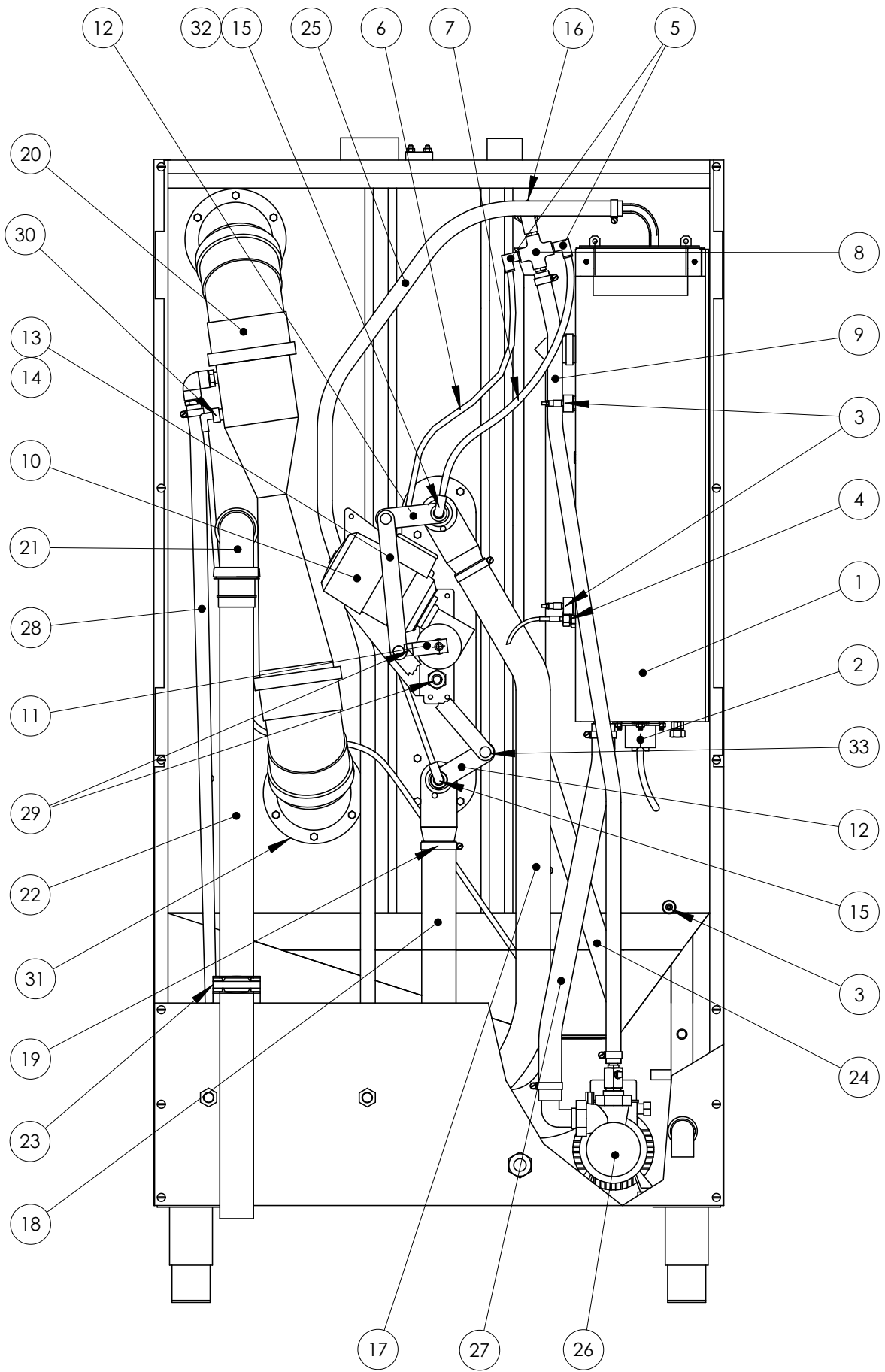
Position	Part number	Description	Quantity
1	14405	Roof.....	1
2	600 1140	Door mounting, long.....	2
3	14478	Clip trim.....	1
4	10905	Hose clip, 16 – 25 mm.....	1
5	13779	Pipe, rinse.....	1
6	13928	Jets, rinse outer.....	4
7	13929	Jets, rinse inner.....	4
8	14665	Guide rail, lower.....	1
9	14658	Guide rail, upper.....	1
10	13552	Hinge complete.....	4
11	600 1082	Seal, rinse.....	1
12	60477	O-ring, 19.2x3.0.....	1
13	600 1121	Central strip.....	1
14	see section 12.14	Electrical cabinet.....	1
15	18772	Detergent box.....	1
16	18771	Box, overheating protectors.....	1
17	14425	Overheating sensor.....	2



12.3 Rear

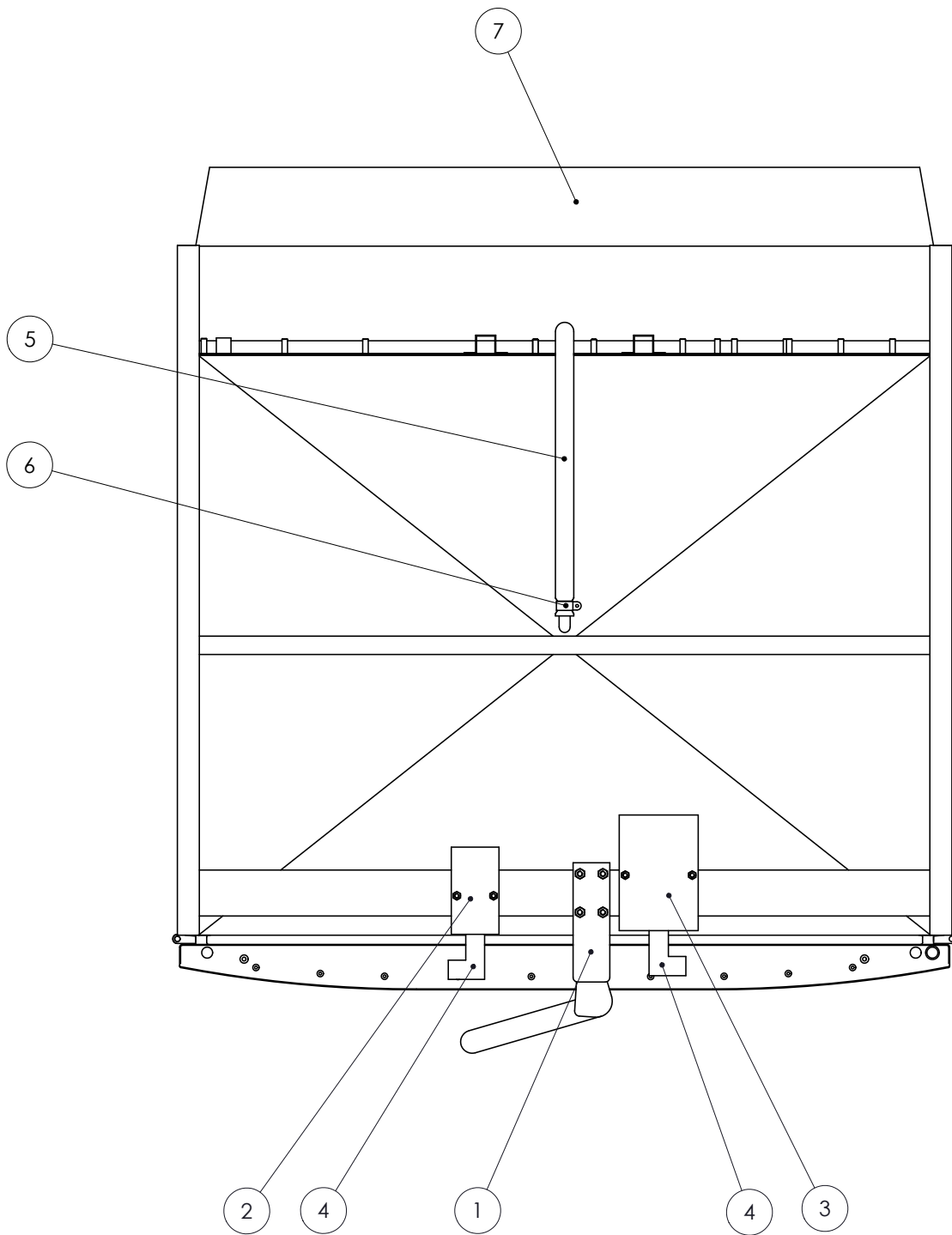
Position	Part number	Description	Quantity
1	18127	Rinse tank	1
2	see section 12.10	Heater, rinse tank	1
3	10529	Level sensor	2
4	18097	Screw for temperature sensor	1
4	18325	Temperature sensor with O-ring	1
5	14543	Connector 90° – ¼” ext	2
6	18452	Hose, rinse lower 8/6 L=960 mm	1
7	18451	Hose, rinse upper 8/6 L=450 mm	1
8	18817	Cross coupling	1
9	18491	Hose, rinse pump Ø 13 L=1230 mm	1
10	see section 12.13	Motor, spray pipe	1
11	600 0099	Crank arm	1
12	600 0241	Rocker arm	2
13	13542	Tow bar complete	2
Contents:			
14	13496	Tow bar	1
33	13509	Bearing	2
15	14515	Swivel connector 90° 1/8” ext	2
16	18818	Angle ¼” ext	1
17	600 5021	Hose wash long L=850 mm	1
18	600 5159	Hose wash short L=420 mm	1
19	60415	Hose clip 40 – 60 mm	4
20	600 5149	Nozzle, ejector*	1
Nr.21	13352	Bend	3
22	13353	Plastic pipe	1
23	13442	Pipe holder	1
24	18391	Drain pipe, rear	1
25	18492	Hose Ø 13 L=1600 mm	1
26	see section 12.12	Rinse pump	1
27	18285	Hose Ø 28 L=550 mm	1
28	18676	Hose* Ø 13 L=980 mm	1
29	18332	Sensor kit	1
Contents:			
	14783	Magnetic sensor	1
	18542	Magnet	1
30	10541	Connector 90°*	1
31	600 1093	Condensation flange washer	2
32	12306	Washer 10.5x22x2	2

* Not on GD 600 Econ



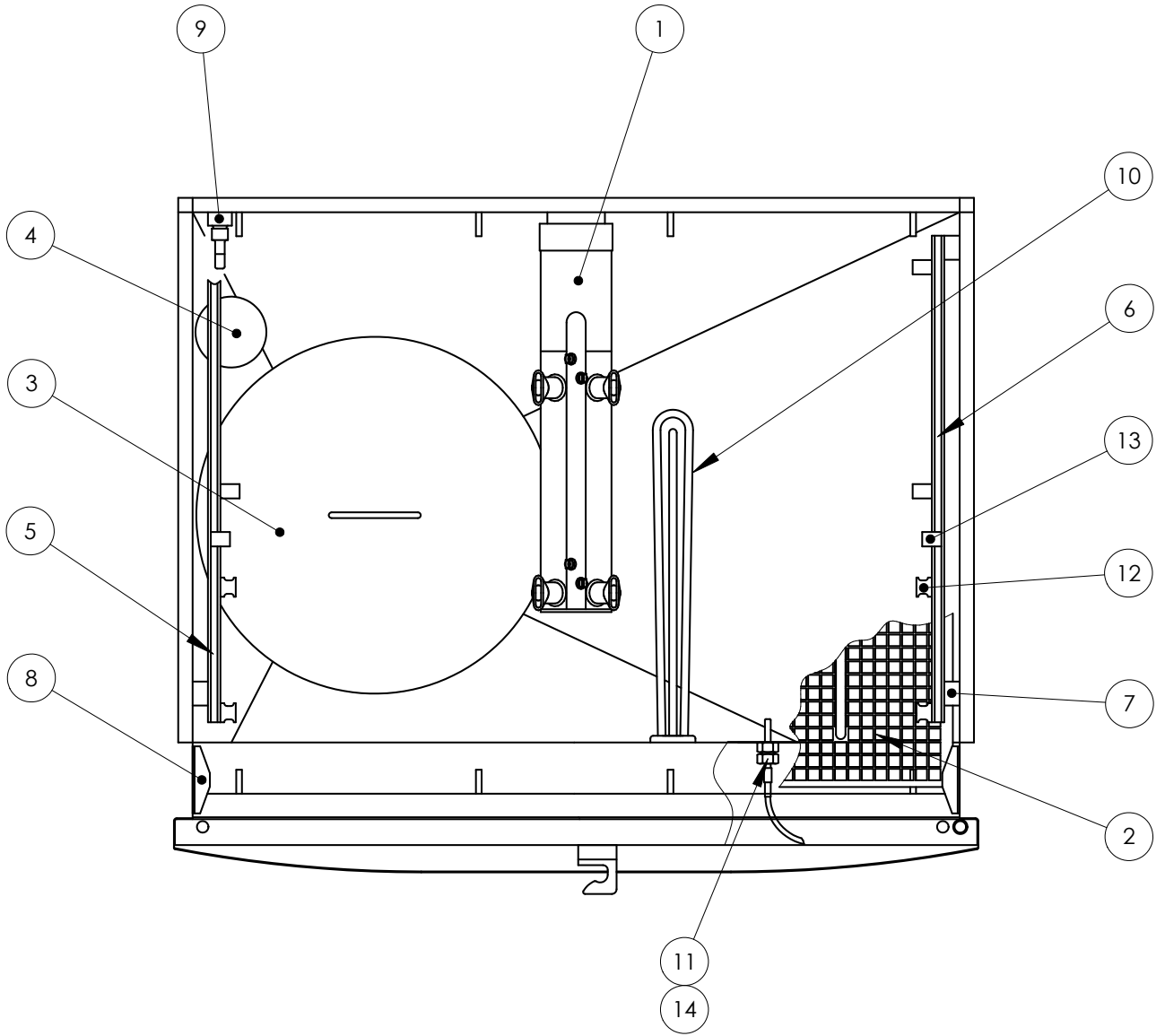
12.4 Lid

Position	Part number	Description	Quantity
1	14658	Guide rail, upper	1
2	14058	Key breaker	1
3	14059	Key breaker with lock	1
4	14060	Key.....	2
5	18679	Hose Ø 13 L=1770 mm	1
6	10905	Hose clip16 – 25 mm.....	1
7	600 1056	Back plate.....	1



12.5 Wash tank

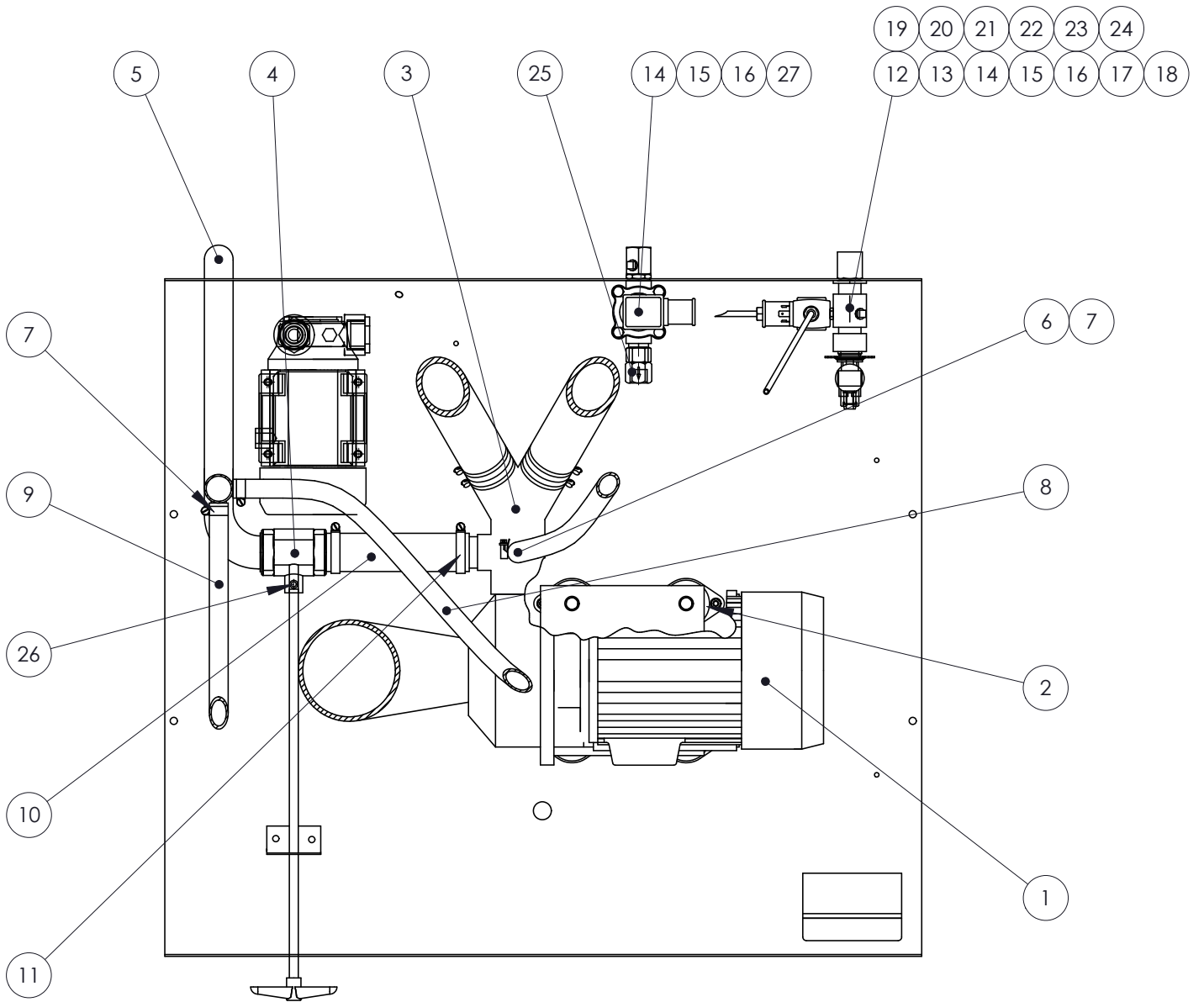
Position	Part number	Description	Quantity
1	13933	Spray pipe complete, see section 12.8	2
2	600 1028	Bottom grating	2
3	600 0074	Seal	1
4	13972	Wide drain seal	1
5	600 1202	Runner left complete	1
6	600 1203	Runner right complete	1
7	600 1154	Distance fittings	8
8	600 1131	Control block	4
9	10529	Level sensor	1
10	see section 12.10	Heater wash tank	1
11	18097	Screw for temperature sensor	1
12	600 1011	Basket roller	8
13	600 1013	Basket stop	12
14	18325	Temperature sensor with O-ring	1



12.6 Base plate

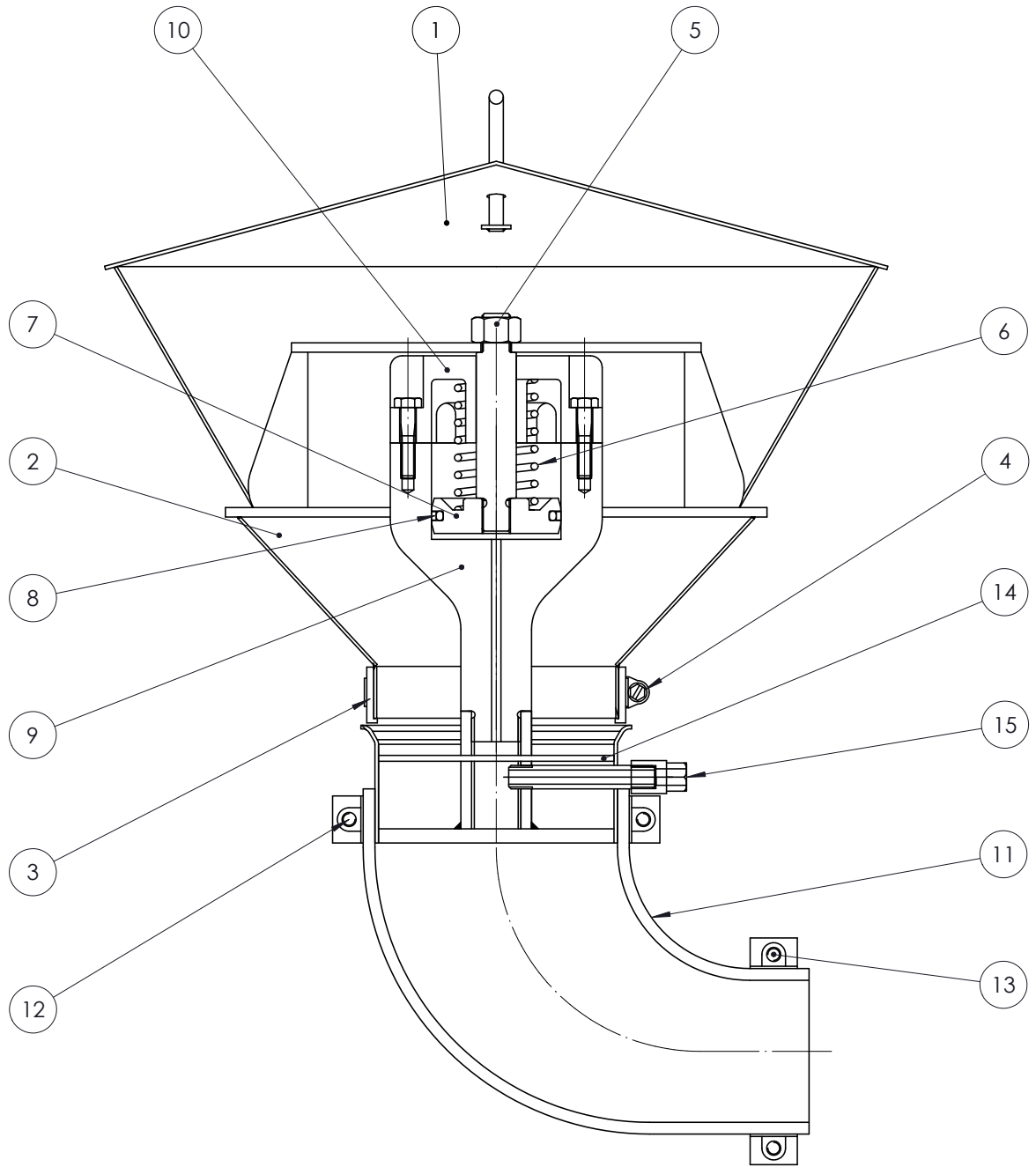
Position	Part number	Description	Quantity
1see section 12.11	Wash pump.....	1
260433	Vibration absorber.....	4
318897	Pipe divider complete.....	1
418401	Drain valve with handle.....	1
518390	Drain pipe lower.....	1
618679	Hose Ø 13 L=1770 mm.....	1
710905	Hose clip 16 – 25 mm.....	5
818677	Hose Ø 16 L=1000 mm.....	1
918678	Hose Ø 16 L=700 mm.....	1
1018531	Hose Ø 32 L=150 mm.....	1
11600 5092	Hose clip 30 – 45 mm.....	6
1218191	Solenoid valve*.....	1
1313619	Solenoid valve 1/8”.....	1
1410068	Plug 1/8”.....	2
1560289	Sleeve ½”.....	1
1660406	Nut ½”.....	2
1710659	Connector 1/8”.....	1
18600 5007	Nipple 1/8” G6.....	2
1960289	Sleeve.....	1
2011549	Sleeve 1/8”.....	1
2110662	Filter.....	1
2210661	Washer.....	2
2318680	Pipe 6/4 L=750 mm.....	1
2418675	Pipe 6/4 L=960 mm.....	1
2513508	Constant flow valve.....	1
2618332	Sensor kit.....	1
Contents:			
14783	Magnetic sensor.....	1
18542	Magnet kit.....	1
27600 5145	Solenoid valve ½”.....	1

* Not on GD 600 Econ



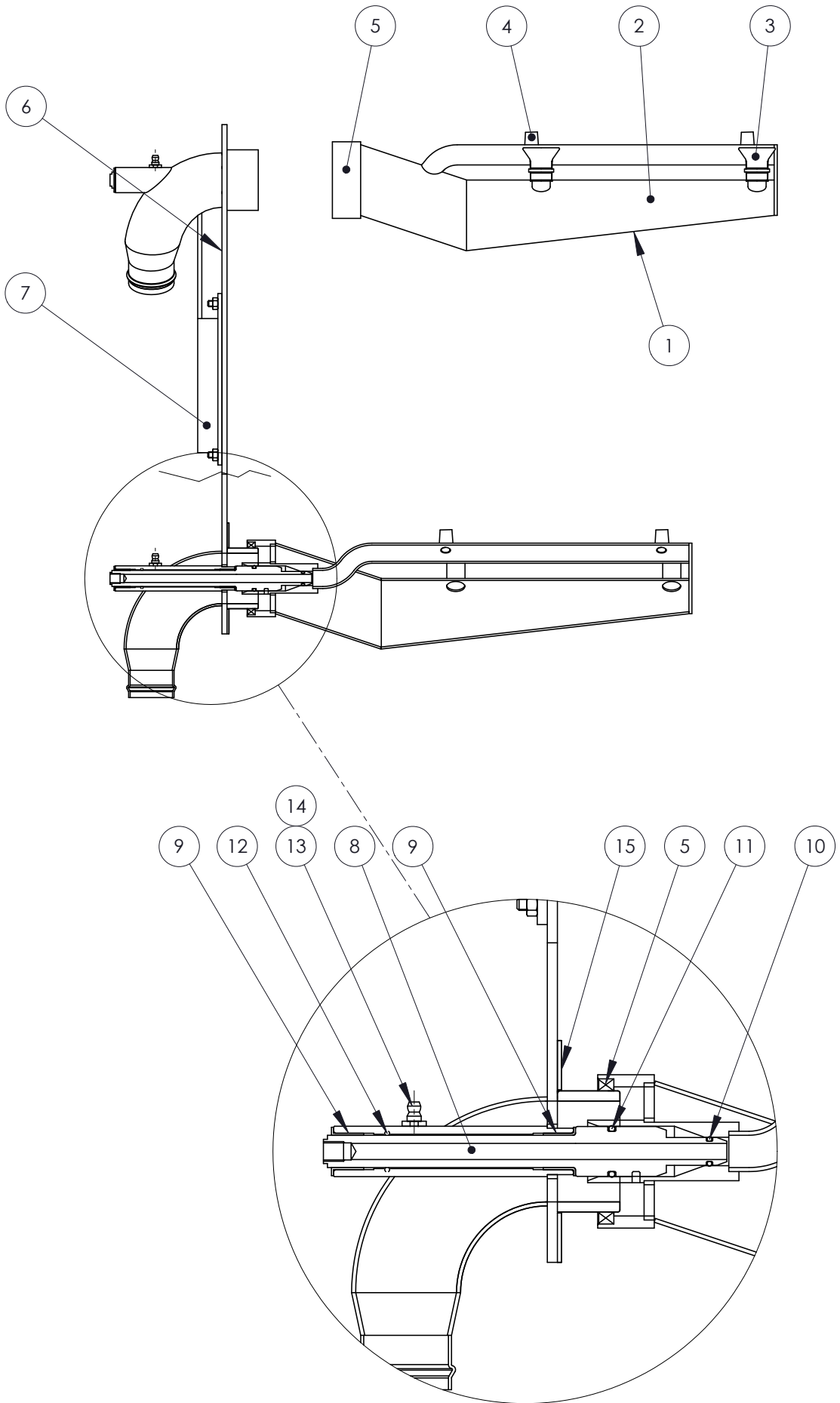
12.7 Granule valve

Position	Part number	Description	Quantity
1	600 0074	Seal	1
2	600 0057	Strainer barrel	1
3	600 0075	Main seal	1
4	10064	Hoseclip 87 – 112 mm	1
5	12206	Nut M12	1
6	60463	Pressure spring	1
7	600 0054	Piston with piston rod	1
8	60462	Piston seal 55x45x4	1
9	600 0055	Cylinder	1
10	600 0056	Cylinder cover	1
11	600 1034	Drainage pipe	1
12	11406	Hose clip 100 – 120 mm	1
13	11405	Hose clip 60 – 80 mm	1
14	13934	Warning sensor for pump	1
15	10711	Connector 1/8" int	1



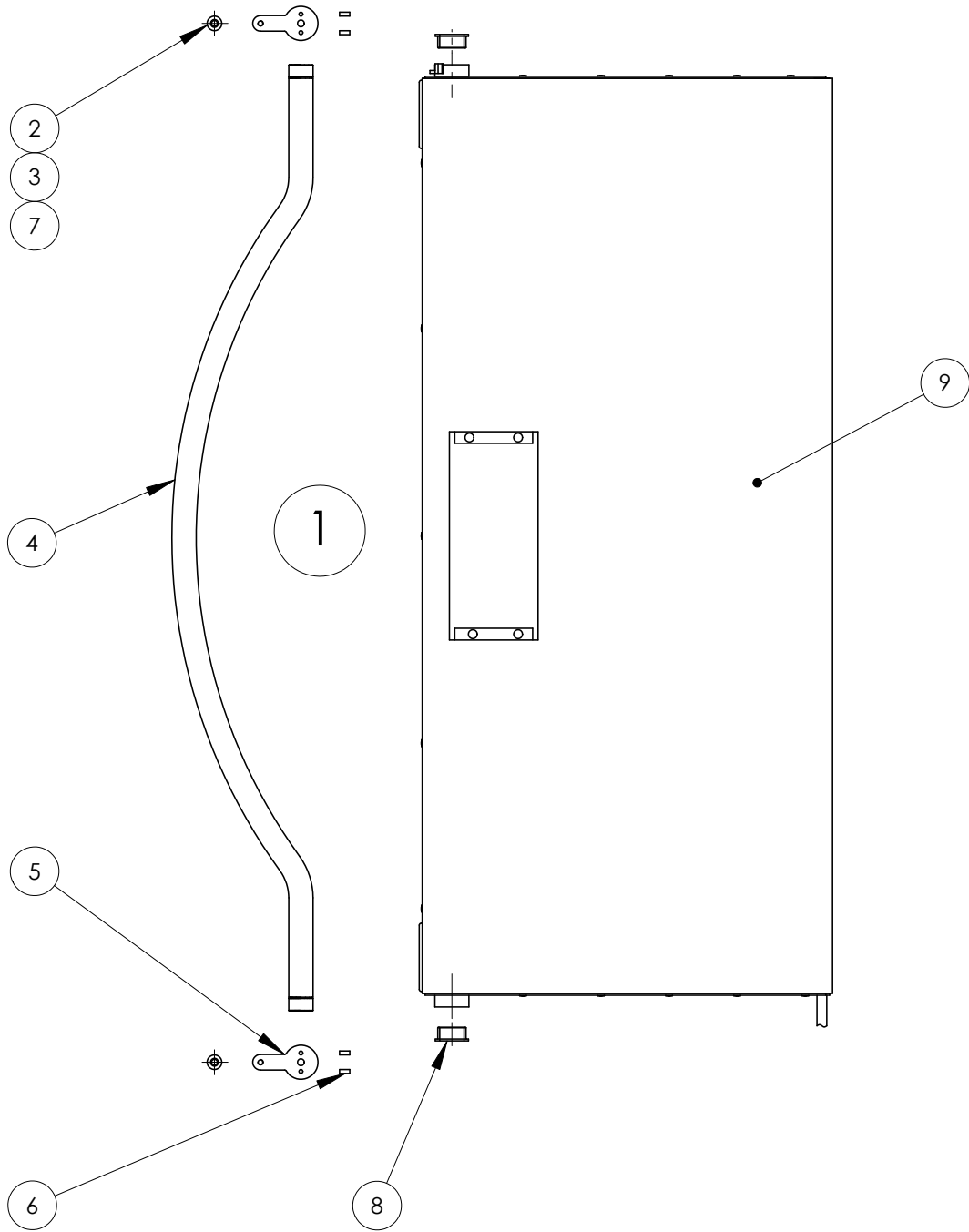
12.8 Spray pipe

Position	Part number	Description	Quantity
1	13933	Spray pipe complete	1
Contents:			
2	600 1141	Spray pipe	1
3	600 1122	Nozzle wash complete	4
4	13930	Nozzle rinse	4
5	600 5035	Radial seal	1
6	600 1111	Spray pipe console	1
7	600 1094	Console	1
8	600 0083	Rocker spindle	2
9	600 5010	Slide bearing, spray pipe	4
10	600 5012	O-ring 9.3x2.4	2
11	60477	O-ring 19.2x3.0	2
12	60460	O-ring 15.3x2.4	2
13	14596	Grease nipple	2
14	12303	Washer	2
15	600 0079	Seal	2



12.9 Door right complete

Position	Part number	Description	Quantity
1	18551	Door right complete	1
Contents:			
2	12084	Screw, MELC65S M6x10 A2	2
3	12303	Washer 6,4x12	2
4	14659	Dorr handle	1
5	14660	Lock arm	2
6	10907	Peg, cylindrical	4
7	10537	Ball bearing	2
8	600 0115	Bearing, door handle	2
9	18375	Door, right	1



12.10 Heaters

Heater complete		Heater	O-ring	Overheat protector
14329	400V/9kW	13935	6005136	14425
14330	230V/9kW	13936	6005136	14425
14331	440V/9kW	13944	6005136	14425
14332	208V/9kW	13946	6005136	14425

12.11 Wash pump

230V/400V/415V/50Hz	14371
Shaft seal	14375
Pump housing	13693
O-ring Pump housing	600 5166
Pump wheel	14374

208V/230V/60Hz/CSA	19128
Shaft seal	14375
Pump housing	13693
O-ring Pump housing	600 5166
Pump wheel	14373

440V/60Hz	13524
Shaft seal	14375
Pump housing	13693
O-ring Pump housing	600 5166
Pump wheel	14373

Pump	Performance	Cable
14371	400V	18148
14371	230V	18887
14378	440V	18148
19128	208V/CSA	19162

12.12 Rinse pump

230V/400V/415V/50Hz	18051
----------------------------	--------------

208V/230V/60Hz/CSA	18876
---------------------------	--------------

440V/60Hz	18408
------------------	--------------

Pump	Performance	Cable
18051	230/400V	18690
18408	440V	18690
18876	208V/230V	18930

12.13 Spray pipe motor

230/400/415/440V/50/60Hz	600 5098
---------------------------------	-----------------

208V/60Hz/CSA	13194
----------------------	--------------

Motor	Cable
600 5098	18692
13194	18928

12.14 Electrical cabinet

Voltage/Frequency/Other	Part number
400V/50Hz	18336
415V/50Hz	18987
440V/60Hz	18803
230V/50 och 60Hz	18874
208V/60Hz/CSA	19113

