



**First Choice**  
Group

SPARE PARTS DIAGRAM FOR



**HOSHIZAKI**

Ice Machine  
IM-240DME  
IM-240DME-21  
IM-240DME-23  
IM-240DME-32

First Choice Group  
Blakeney Way, Kingswood Lakeside  
Cannock, Staffs, WS11 8LD  
TEL: 01543 577778 FAX: 01543504141  
Email: [enquires@firstchoice-cs.co.uk](mailto:enquires@firstchoice-cs.co.uk)  
Web: [www.firstchoice-cs.co.uk](http://www.firstchoice-cs.co.uk)



## **HOSHIZAKI MODULAR CUBER**

**MODEL IM-240DME  
IM-240DME-21  
IM-240DME-23  
IM-240DME-32**

## **PARTS LIST**

**[ HE, GENERAL (50Hz), KOREA, GENERAL (60Hz), HSP, AUSTRALIA ]**

J-1	DEC. 1998	E-0	DEC. 2004	U-1	APR. 2009
K-0	DEC. 1999	E-1	APR. 2005	V-0	JAN. 2010
A-0	DEC. 2000	E-2	OCT. 2005	L-0	JAN. 2011
B-0	DEC. 2001	F-0	DEC. 2005		
B-1	OCT. 2002	F-1	MAY. 2006		
C-0	DEC. 2002	G-0	JAN. 2007		
C-1	FEB. 2003	G-1	AUG. 2007		
D-0	DEC. 2003	H-0	JAN. 2008		
D-1	NOV. 2004	U-0	JAN. 2009		

## MATERIAL ABBREVIATIONS

### ALUMINUM

AL = Aluminum

### COPPER

CU = Copper

### PLASTIC

ABS = Acrylonitrile -butadiene - styrene  
AC = Polyacetal  
EVA = Ethylene vinyl acetate  
PA = Polyamide = Nylon  
PC = Polycarbonate  
PE = Polyethylene  
PES = Polyester  
PETP = Polyethylene terephthalate = Tetlon  
PP = Polypropylene  
PS = Polystyrene  
PTFE = Polytetrafluoroethylene = Teflon  
PUR = Polyurethane  
PVC = Polyvinyl chloride

### RUBBER

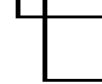
VN = Vinyl Nitrile  
EPDM = EP rubber  
NBR = Nitrile butadiene rubber  
NR = Natural rubber  
NP = Neoprene  
SI.R = Silicone rubber  
SY.R = Synthetic rubber  
EPH = Epichlorohydrin

### STEEL

GS = Galvanized steel  
SS = Stainless steel  
PS = Plated steel  
PAS = Primed steel

### AUXILIARY CODE

K-0



Designates the year. "K" indicates the year 2000. Years progress or regress in alphabetical order. "J" is 1999, "L" is 2001, "M" is 2002, and so on. The letters "I" and "O" were skipped.

Designates significant part changes within the same year. Base is 0 and this number advances for each change.

Example: P-1



"P" indicates 2004.

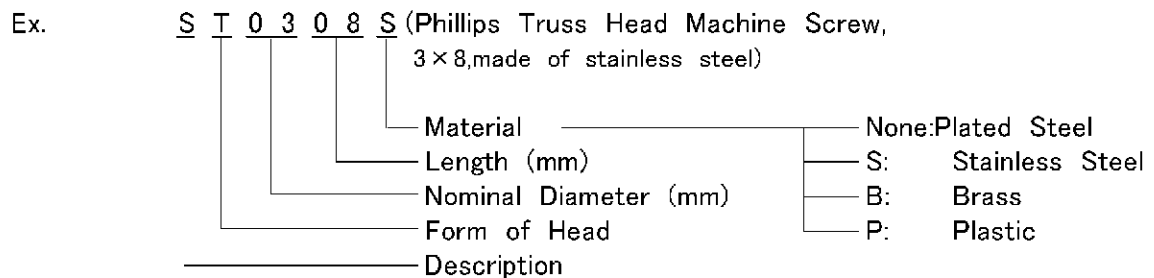
"1" indicates the first significant part change for 2004.

### MARKS LOCATED UNDER THE AUXILIARY CODE

- = Part deleted.
- x = Part deleted and replaced by "o" part.
- o = New part in place of "x" part.

## FASTENER ABBREVIATION LIST

ST	=	Phillips Truss Head Machine Screw
SP	=	Phillips Pan Head Machine Screw
SF	=	Phillips Flat Head Machine Screw
SS	=	Phillips Pan Head Machine Screw with Split Lock Washer
SW	=	Phillips Pan Head Machine Screw with Split Lock Washer and Flat Washer
T1	=	Phillips Truss Head Tapping Screw (Correspond to Type A)
T2	=	Phillips Truss Head Tapping Screw (Correspond to Type B)
T3	=	Phillips Truss Head Tapping Screw (Correspond to Type C)
FT	=	Phillips Truss Head Tapping Screw (Special)
BH	=	Hexagon Head Bolt
BC	=	Socket Head Cap Screw
BS	=	Hexagon Bolt with Split Washer
BW	=	Hexagon Bolt with Split Washer and Flat Washer
BF	=	Hexagon Flange Bolt
BR	=	Cross-Recessed Hexagon Head Bolt
BRW	=	Cross-Recessed Hexagon Head Bolt with Split Lock Washer and Flat Washer
WL	=	Split Lock Washer
WT	=	External Tooth Washer
WF	=	Flat Washer
WS	=	Spring Washer
NH	=	Hexagon Nut
NF	=	Hexagon Flange Nut
NC	=	Hexagon Cap Nut
NS	=	Square Nut
NW	=	Wing Nut



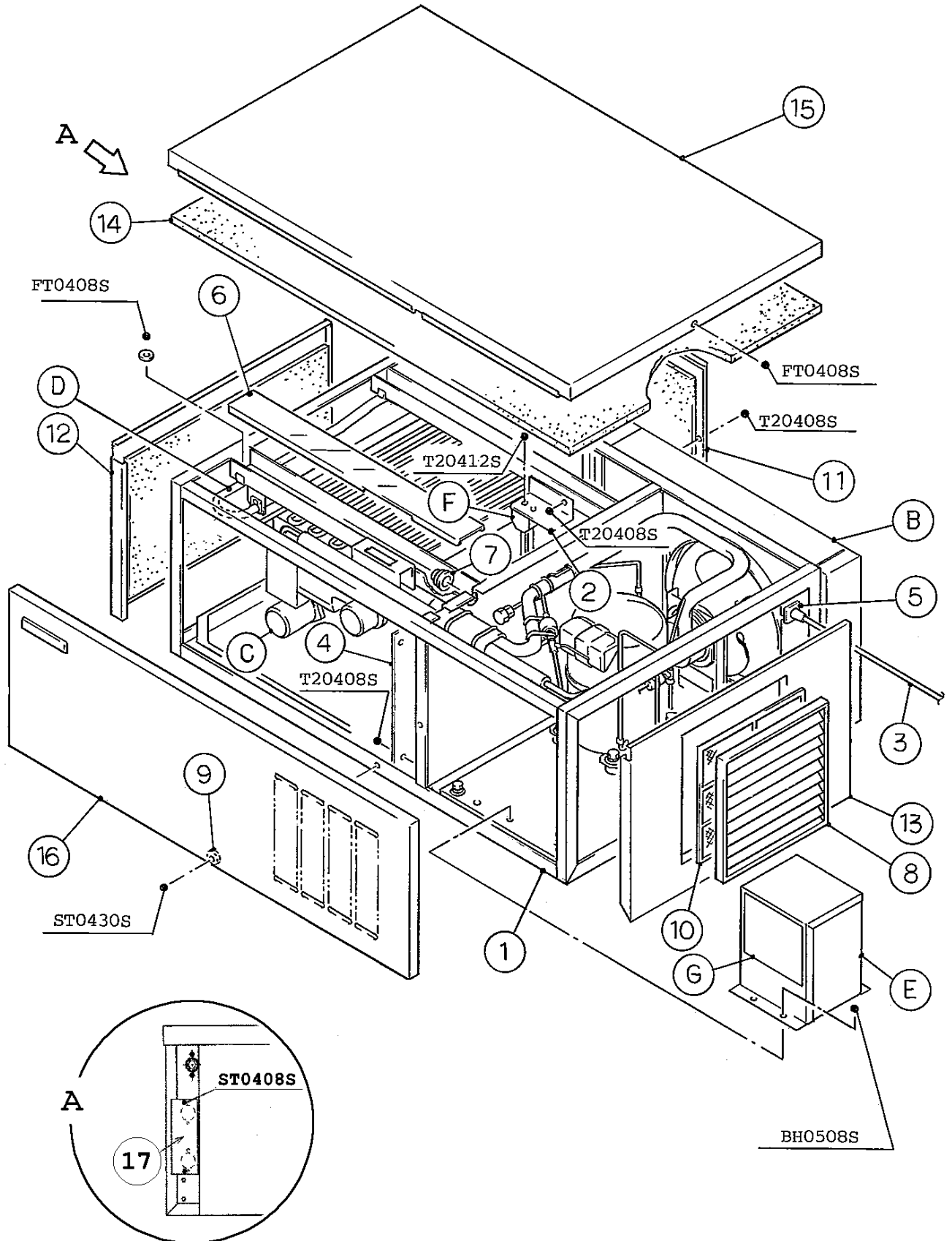
(Note) Second character is numerical except the list.  
 Ex: S1,S2,B3 etc.

And abbreviations and names are shown under the illustration.

IM-240DME  
IM-240DME-21, -23, -32

A. ICE CUBER ASSY

(D-1)(E-0)(E-1)  
(B-1)(C-0)(C-1)(D-0)  
(J-1)(K-0)(A-0)(B-0)



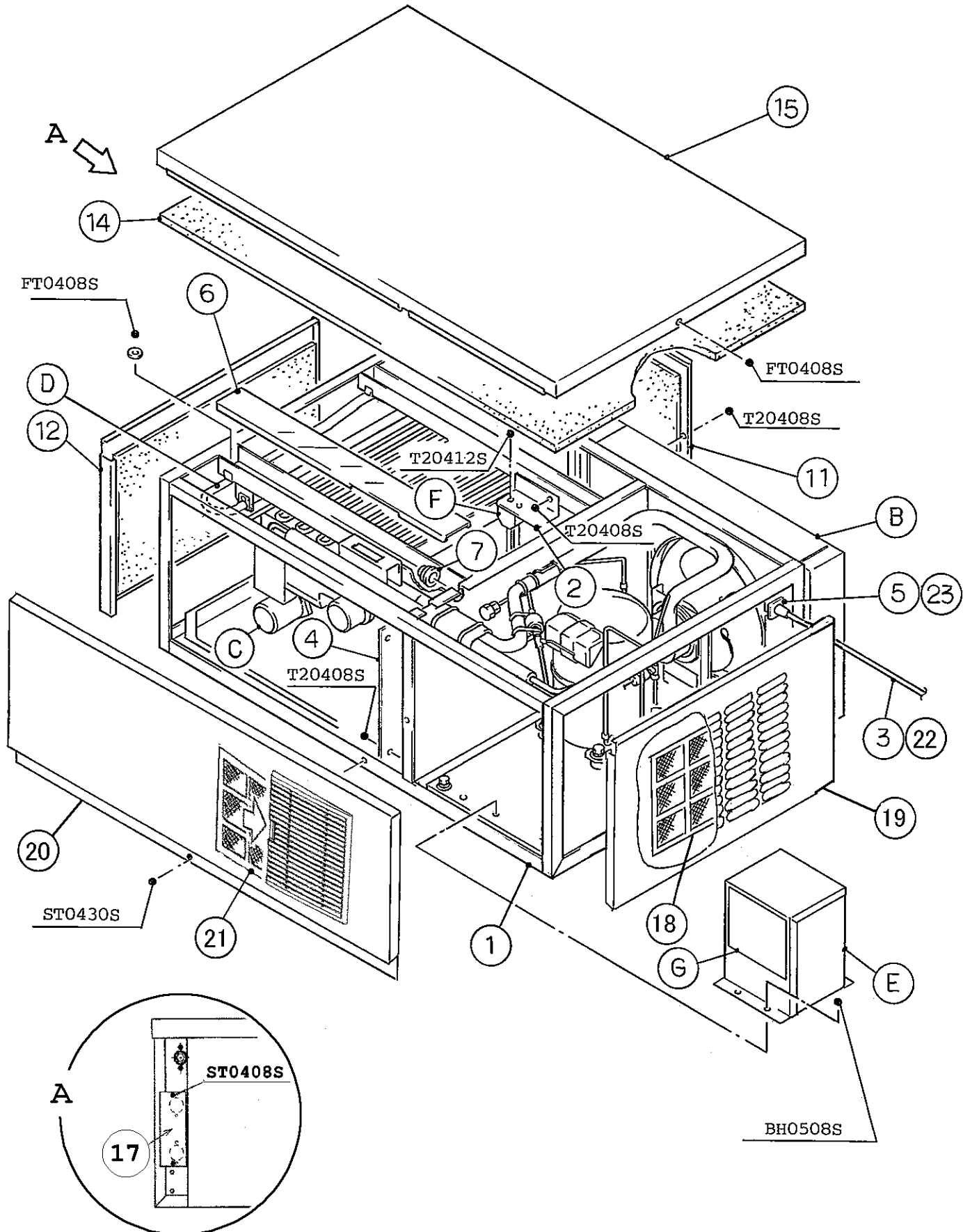
IM-240DME

IM-240DME-21, -23, -32

A. ICE CUBER ASSY

(G-1)(H-0)(U-0)

(E-2)(F-0)(F-1)(G-0)

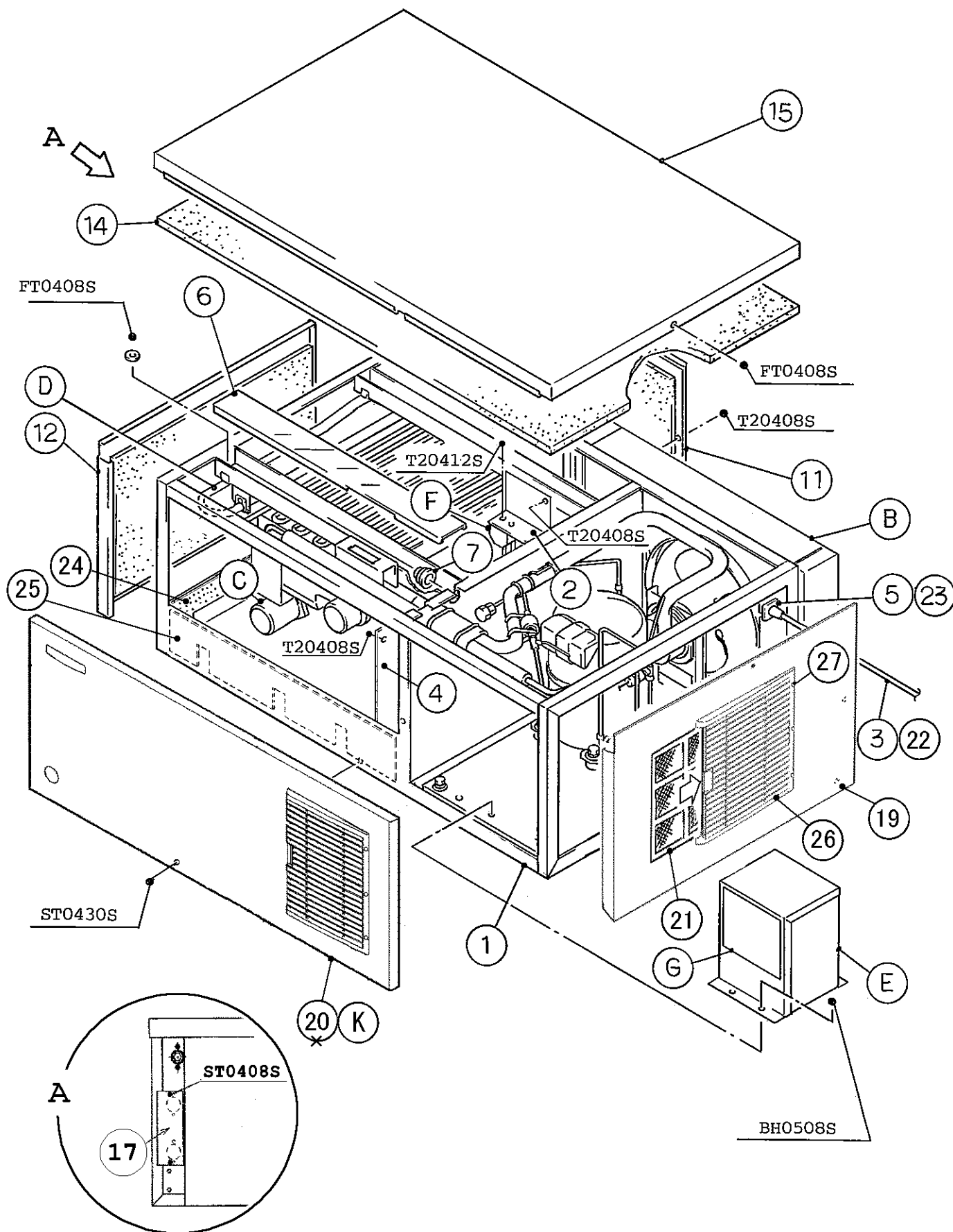


IM-240DME

IM-240DME-21, -23, -32

A. ICE CUBER ASSY

(U-1) and later



**HE, GENERAL, KOREA, HSP, AUSTRALIA**

MODEL : <b>IM-240DME</b>							
<b>IM-240DME-21, -23, -32</b>				TITLE : <b>A. ICE CUBER ASSY</b>			
INDEX NO.	DESCRIPTION	MATERIAL OR MODEL NUMBER	PART NUMBER	REQ'D NUMBER			
				J-1,K-0 A-0,B-0	B-1 C-0	C-1 D-0	D-1 E-0
B	REFRIGERATION ASSY	-	1H1803A01	1	1	-	
			1H1803A02			1	-
			1H3062A01				1
C	ICE MAKING MECHANISM ASSY	(240DME)	2H1068A03	1	1	1	1
		(240DME-21,-23,-32)	-	1	1	1	1
D	WATER CIRCUIT ASSY	-	2H3255A01	1	1	1	1
E	CONTROL BOX ASSY	-	2H3965A01	1	-		
			2H3965A05		1	1	-
			2H3965A09				1
			2H6763A01				
			2H7543A01				
F	BIN CONTROL SWITCH ASSY	(S-0820)	317102A02	1	1	1	1
G	LABEL LOCATION	(240DME)	3X1569A02	1	1	1	1
			3X1569A03				
		(240DME-21,-23,-32)	-	1	1	1	1
K	FRONT COVER ASSY		-				
L	ACCESSORIES		-	1	1	1	1
M	OPTION						
1	UNIT FRAME	G.S	1H0395G04	1	1	1	-
			1H3061G01				1
			1H3061G02				
2	BRACKET - BIN CONTROL SWITCH	G.S	427178-01	1	1	1	1
3	POWER SUPPLY CORD (WITH UK PLUG)	(HE) (GENERAL) (HSP, IM-240DME) (HSP, IM-240DME-23)	452265-01	1	1	1	1
	POWER SUPPLY CORD (CONTINENTAL)	(HE) (KOREA)	452264-01	1	1	1	1
	POWER SUPPLY CORD	(RINNAI) (OCEANIA) (AUSTRALIA) (HSP, IM-240DME-21)	452998-01	1	1	1	1
4	PROTECTOR - SEPARATOR	ABS	3X9746-01	1	1	1	1



**HE, GENERAL, KOREA, HSP, AUSTRALIA**

MODEL : <b>IM-240DME</b>							
IM-240DME-21, -23, -32				TITLE : <b>A. ICE CUBER ASSY</b>			
INDEX NO.	DESCRIPTION	MATERIAL OR MODEL NUMBER	PART NUMBER	REQ'D NUMBER			
				E-1	E-2 F-0	F-1 G-0	G-1 H-0 U-0
B	REFRIGERATION ASSY	-	-				
			-				
			1H3062A01	1	1	1	1
C	ICE MAKING MECHANISM ASSY	(240DME)	2H1068A03	1	1	1	1
		(240DME-21,-23,-32)	-	1	1	1	1
D	WATER CIRCUIT ASSY	-	2H3255A01	1	1	1	1
E	CONTROL BOX ASSY	-	-				
			-				
			2H3965A09	-			
			2H6763A01	1	1	-	
			2H7543A01			1	1
F	BIN CONTROL SWITCH ASSY	(S-0820)	317102A02	1	1	1	1
G	LABEL LOCATION	(240DME)	-				
			3X1569A03	1	1	1	1
			(240DME-21,-23,-32)	-	1	1	1
K	FRONT COVER ASSY		-				
L	ACCESSORIES		-	1	1	1	1
M	OPTION						
1	UNIT FRAME	G.S	-				
			1H3061G01	1	1	1	-
			1H3061G02				1
2	BRACKET - BIN CONTROL SWITCH	G.S	427178-01	1	1	1	1
3	POWER SUPPLY CORD (WITH UK PLUG)	(HE) (GENERAL) (HSP, IM-240DME) (HSP, IM-240DME-23)	452265-01	1	1	1	×
	POWER SUPPLY CORD (CONTINENTAL)	(HE) (KOREA)	452264-01	1	1	1	×
	POWER SUPPLY CORD	(RINNAI) (OCEANIA) (AUSTRALIA) (HSP, IM-240DME-21)	452998-01	1	1	1	×
4	PROTECTOR - SEPARATOR	ABS	3X9746-01	1	1	1	1

**HE, GENERAL, KOREA, HSP, AUSTRALIA**

MODEL : <b>IM-240DME</b>							
IM-240DME-21, -23, -32				TITLE : <b>A. ICE CUBER ASSY</b>			
INDEX NO.	DESCRIPTION	MATERIAL OR MODEL NUMBER	PART NUMBER	REQ'D NUMBER			
				U-1 V-0 L-0			
B	REFRIGERATION ASSY	-	1H3062A01	1			
C	ICE MAKING MECHANISM ASSY	(240DME)	2H1068A03	1			
		(240DME-21,-23,-32)	-	1			
D	WATER CIRCUIT ASSY	-	2H3255A01	1			
E	CONTROL BOX ASSY	-	2H7543A01	1			
F	BIN CONTROL SWITCH ASSY	(S-0820)	317102A02	1			
G	LABEL LOCATION	(240DME)	3X1569A03	1			
		(240DME-21,-23,-32)	-	1			
K	FRONT COVER ASSY	-	2H9595A01	1			
L	ACCESSORIES		-	1			
M	OPTION			1			
1	UNIT FRAME	G.S	1H3061G02	-			
			1H4490G01	1			
2	BRACKET - BIN CONTROL SWITCH	G.S	427178-01	-			
			4Y5951M01	1			
3							
4	PROTECTOR - SEPARATOR	ABS	3X9746-01	-			
			3Y4267P01	1			
5							
6	GUIDE - CONNECTOR	PVC	312762-01	1			
7	GROMMET	NBR	4H2568-01	1			
8							
9							
10							
11	REAR PANEL	S.S	3X9564G01	-			
			3Y4261G01	1			
12	SIDE PANEL (LEFT)	S.S	425777G01	-			
			3Y4258G01	1			
13							
14	INSULATION - TOP PANEL	PE	3H9603-01	1			
15	TOP PANEL	S.S	208210-01	1			
16							
17	PLATE	S.S	4Y2479-01	1			



**HE, GENERAL, KOREA, HSP, AUSTRALIA**

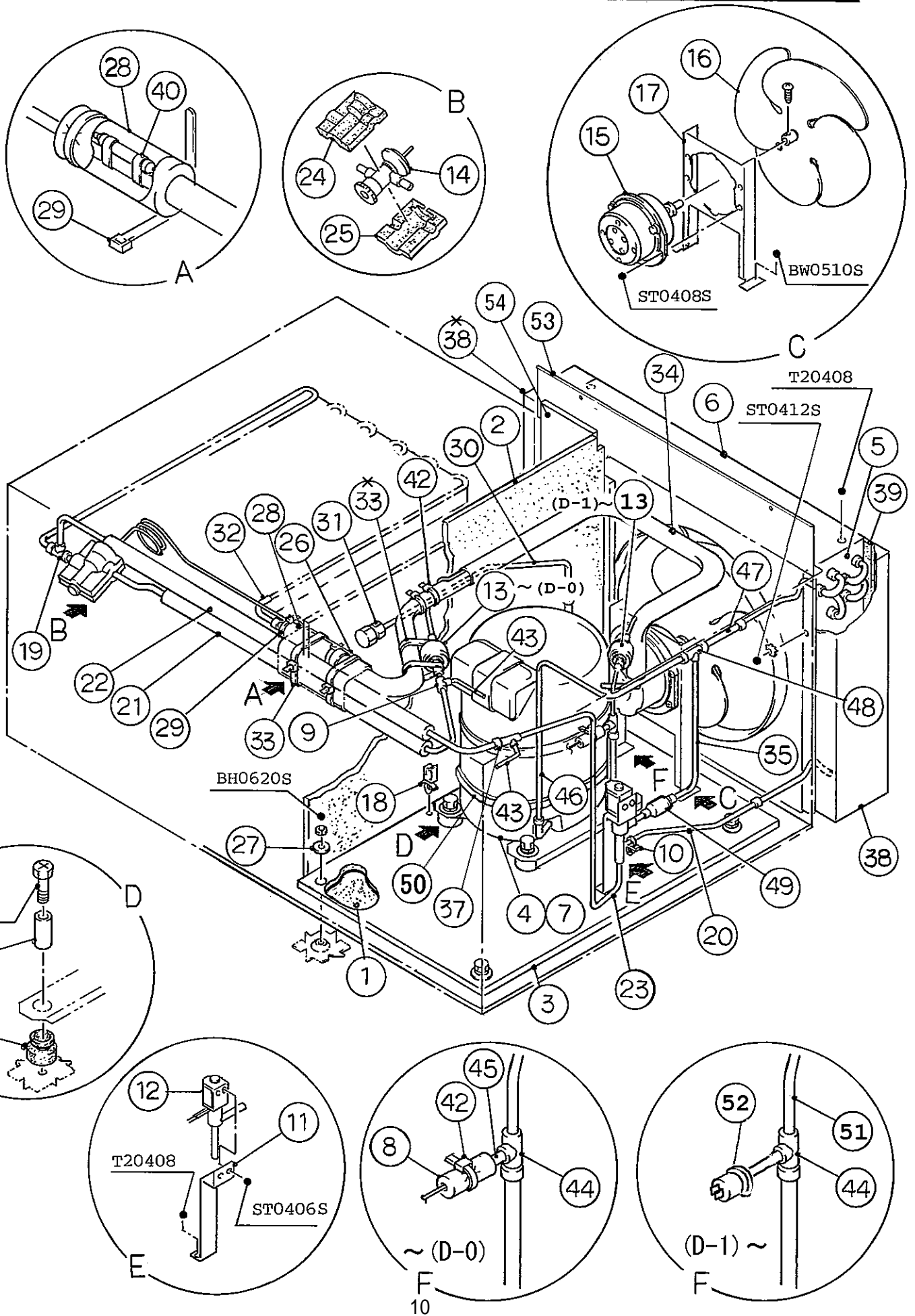
MODEL : <b>IM-240DME</b>							
IM-240DME-21, -23, -32				TITLE : <b>A. ICE CUBER ASSY</b>			
INDEX NO.	DESCRIPTION	MATERIAL OR MODEL NUMBER	PART NUMBER	REQ'D NUMBER			
				E-1	E-2 F-0	F-1 G-0	G-1 H-0 U-0
5	BUSHING		450414-01	1	1	1	x
6	GUIDE - CONNECTOR	PVC	312762-01	1	1	1	1
7	GROMMET	NBR	4H2568-01	1	1	1	1
8	LOUVER	ABS	103121-05	1	x		
9	STOPPER	NBR (BLACK)	4H9296-01	1	x		
10	AIR FILTER (B)	ABS	208283G01	1	x		
11	REAR PANEL	-	-				
		S.S	3X9564G01	1	1	1	1
12	SIDE PANEL (LEFT)	S.S	425777G01	1	1	1	1
13	SIDE PANEL (RIGHT)	S.S	2H2694G01	1	x		
14	INSULATION - TOP PANEL	PE	3H9603-01	1	1	1	1
15	TOP PANEL	S.S	208210-01	1	1	1	1
16	FRONT COVER	(EXCEPT RINNAI)	3H9572G01	1	x		
	FRONT COVER	(RINNAI)	3X1550G01	1	x		
17	PLATE	S.S	4Y2479-01	1	1	1	1
18	AIR FILTER	ABS	332632G01		1	1	1
19	SIDE PANEL(RIGHT)	S.S	3Y0557G01		1	1	1
20	FRONT COVER	S.S	3Y0571G01		1	1	1
21	AIR FILTER B	P.P	2A2063G01		1	1	1
22	POWER CORD (WITH UK PLUG)	(UK)	P00244-01				1
	POWER CORD	(CONTINENTAL)	P00243-01				1
	POWER SUPPLY CORD	(AUSTRALIA)	452998-01				1
23	CONNECTOR	-	P00246-01				1



IM-240DME  
 IM-240DME-21, -23, -32

B. REFRIGERATION ASSY

(F-0)(F-1) and later  
 (D-1)(E-0)(E-1)(E-2)  
 (B-1)(C-0)(C-1)(D-0)  
 (J-1)(K-0)(A-0)(B-0)



**HE, GENERAL, KOREA, HSP, AUSTRALIA**

MODEL : <b>IM-240DME</b>							
IM-240DME-21, -23, -32				TITLE : <b>B. REFRIGERATION ASSY</b>			
INDEX NO.	DESCRIPTION	MATERIAL OR MODEL NUMBER	PART NUMBER	REQ'D NUMBER			
				J-1,K-0 A-0,B-0	B-1 C-0	C-1 D-0	D-1 E-0
1	INSULATION - CHASSIS	PE	4X4052-01	1	1	1	1
2	INSULATION - SEPARATOR	PE	4H3653-01	1	1	1	1
3	BASE	G.S	3X2526G01	1	1	1	-
			3X9155G01				1
4	COMPRESSOR	RS80C1E-CAZ-219	4A1581-01	1	1	1	1
5	CONDENSER - AIR COOLED	-	2H3592-01	1	1	1	1
6	SHROUD	G.S	4X9580G01	1	1	1	1
7	MOTOR PROTECTOR	071-0518-07	4A1581F01	1	1	1	1
8	INSULATION TUBE	7762-1020, L=50 (SLIT)	1H1803-64	1	1	1	×
9	TEE	COPPER	456655-01	1	1	1	-
			417394-01				1
10	CLAMP	575	428644-02	1	1	1	1
11	BRACKET - HOT GAS VALVE	G.S	425487-01	1	1	1	1
12	HOT GAS VALVE	ATS-7S10HD-1	418636-02	1	1	1	1
13	DRIER	DML 032.5S	462965-01	1	1	1	1
14	EXPANSION VALVE	FSE-10NHD-2	454836-02	1	1	1	1
15	FAN MOTOR	FW-4L27L-4F	4Y2900-01	1	1	1	1
16	FAN BLADE	FW-30PHR	421462-01	1	1	1	1
17	BRACKET - FAN MOTOR	G.S	3X1872-01	1	1	1	-
			3X9156-01				1
18	WIRE SADDLE	LWS-2NS	428060-03	3	3	3	3
19	TEE	COPPER	430608-01	1	1	1	1
20	PIPE (C)	COPPER	3X1873-01	1	1	1	1
21	PIPE (B) - HIGH SIDE	COPPER	4X6808G01	1	1	1	-
			4Y2435G01				1
22	PIPE - HOT GAS	COPPER	4X5821G01	1	1	1	1
23	PIPE (B) - HOT GAS	COPPER	4X5822-01	1	1	1	1
24	COVER (A) - EXPANSION VALVE	PE	4H9239-01	1	1	1	1
25	COVER (B) - EXPANSION VALVE	PE	4H9239-02	1	1	1	1
26	INSULATION TUBE	7762-2636 L=150	1H1803-52	1	1	1	-
			1H3062-52				1

**HE, GENERAL, KOREA, HSP, AUSTRALIA**

MODEL : <b>IM-240DME</b>							
IM-240DME-21, -23, -32				TITLE : <b>B. REFRIGERATION ASSY</b>			
INDEX NO.	DESCRIPTION	MATERIAL OR MODEL NUMBER	PART NUMBER	REQ'D NUMBER			
				E-1	E-2 F-0	F-1 G-0	G-1 H-0 U-0
1	INSULATION - CHASSIS	PE	4X4052-01	1	1	1	1
2	INSULATION - SEPARATOR	PE	4H3653-01	1	1	1	1
3	BASE	G.S	-				
			3X9155G01	1	1	1	1
4	COMPRESSOR	RS80C1E-CAZ-219	4A1581-01	1	1	1	1
5	CONDENSER - AIR COOLED	-	2H3592-01	1	1	1	1
6	SHROUD	G.S	4X9580G01	1	1	1	1
7	MOTOR PROTECTOR	071-0518-07	4A1581F01	1	1	1	1
8	-	-	-				
9	TEE	COPPER	-				
			417394-01	1	1	1	1
10	CLAMP	575	428644-02	1	1	1	1
11	BRACKET - HOT GAS VALVE	G.S	425487-01	1	1	1	1
12	HOT GAS VALVE	ATS-7S10HD-1	418636-02	1	1	1	1
13	DRIER	DML 032.5S	462965-01	1	1	1	1
14	EXPANSION VALVE	FSE-10NHD-2	454836-02	1	1	1	1
15	FAN MOTOR	FW-4L27L-4F	4Y2900-01	1	1	1	1
16	FAN BLADE	FW-30PHR	421462-01	1	1	1	1
17	BRACKET - FAN MOTOR	G.S	-				
			3X9156-01	1	1	1	1
18	WIRE SADDLE	LWS-2NS	428060-03	3	3	3	3
19	TEE	COPPER	430608-01	1	1	1	1
20	PIPE (C)	COPPER	3X1873-01	1	1	1	1
21	PIPE (B) - HIGH SIDE	COPPER	-				
			4Y2435G01	1	1	1	1
22	PIPE - HOT GAS	COPPER	4X5821G01	1	1	1	1
23	PIPE (B) - HOT GAS	COPPER	4X5822-01	1	1	1	1
24	COVER (A) - EXPANSION VALVE	PE	4H9239-01	1	1	1	1
25	COVER (B) - EXPANSION VALVE	PE	4H9239-02	1	1	1	1
26	INSULATION TUBE	7762-2636 L=150	1H1803-52	1	1	1	-
			1H3062-52				1
27	COLLAR	-	4H8163-01	4	4	4	4



**HE, GENERAL, KOREA, HSP, AUSTRALIA**

MODEL : <b>IM-240DME</b>							
IM-240DME-21, -23, -32				TITLE : <b>B. REFRIGERATION ASSY</b>			
INDEX NO.	DESCRIPTION	MATERIAL OR MODEL NUMBER	PART NUMBER	REQ'D NUMBER			
				U-1 V-0 L-0			
1	INSULATION - CHASSIS	PE	4X4052-01	1			
2	INSULATION - SEPARATOR	PE	4H3653-01	—			
			3Y4262P01	1			
3	BASE	G.S	3X9155G01	1			
4	COMPRESSOR	RS80C1E-CAZ-219	4A1581-01	1			
5	CONDENSER - AIR COOLED	-	2H3592-01	1			
6	SHROUD	G.S	4X9580G01	—			
			2H5338-01	1			
7	MOTOR PROTECTOR	071-0518-07	4A1581F01	1			
8							
9	TEE	COPPER	417394-01	1			
10	CLAMP	575	428644-02	1			
11	BRACKET - HOT GAS VALVE	G.S	425487-01	1			
12	HOT GAS VALVE	ATS-7S10HD-1	418636-02	1			
13	DRIER	DML 032.5S	462965-01	1			
14	EXPANSION VALVE	FSE-10NHD-2	454836-02	1			
15	FAN MOTOR	FW-4L27L-4F	4Y2900-01	1			
16	FAN BLADE	FW-30PHR	421462-01	1			
17	BRACKET - FAN MOTOR	G.S	3X9156-01	—			
			3Y4252M01	1			
18	WIRE SADDLE	LWS-2NS	428060-03	3			
19	TEE	COPPER	430608-01	1			
20	PIPE (C)	COPPER	3X1873-01	1			
21	PIPE (B) - HIGH SIDE	COPPER	4Y2435G01	1			
22	PIPE - HOT GAS	COPPER	4X5821G01	1			
23	PIPE (B) - HOT GAS	COPPER	4X5822-01	1			
24	COVER (A) - EXPANSION VALVE	PE	4H9239-01	1			
25	COVER (B) - EXPANSION VALVE	PE	4H9239-02	1			
26	INSULATION TUBE	7762-2636 L=150	1H3062-52	1			
27	COLLAR	-	4H8163-01	4			
28	INSULATION	25 ID x 30 OD	4X8643-01	1			
	(FOR FOOD ZONE)	L=130					
29	TIE	CV-100	7920-0002	3			

**HE, GENERAL, KOREA, HSP, AUSTRALIA**

MODEL : <b>IM-240DME</b>							
IM-240DME-21, -23, -32				TITLE : <b>B. REFRIGERATION ASSY</b>			
INDEX NO.	DESCRIPTION	MATERIAL OR MODEL NUMBER	PART NUMBER	REQ'D NUMBER			
				J-1,K-0 A-0,B-0	B-1 C-0	C-1 D-0	D-1 E-0
27	COLLAR	-	4H8163-01	4	4	4	4
28	INSULATION (FOR FOOD ZONE)	25 ID x 30 OD L=130	4X8643-01	1	1	1	1
29	TIE	CV-100	7920-0002	3	3	3	3
30	PIPE	COPPER	4Y1833-01	1	1	1	1
31	ACCESS VALVE	TCJ-2F15NHD-1	455119-01	1	1	1	1
32	PIPE (B) - LOW SIDE	COPPER	4H3668G02	1	1	1	1
33	TIE	CV-200	7920-0004	2	2	2	-
34	HEAT EXCHANGER	-	3X2525G01	1	1	1	-
			3X9153G01				1
35	COPPER TUBE (G) - HOT GAS	COPPER	4X5825-01	1	1	1	1
36	GROMMET		434922-02	4	4	4	4
37	TEE	COPPER	420041-03	1	1	1	1
38	GUARD - CONDENSER	G.S	3H8247-01	2	2	2	2
39	SEAL	t3 x W2 x L360	1H1803-62	1	1	1	1
40	CLIP	068N2531	452254-02	2	2	2	2
41	SPACER		434921-01	4	4	4	4
42	TIE	CV-100	7920-0002	2	2	2	2
43	PROCESS TUBE	COPPER	4X5343-01	2	2	2	2
44	TEE	COPPER	420041-03	1	1	1	1
45	TUBE - CAPILLARY	COPPER	4X4276-01	1	1	1	x
46	PIPE (F) - HIGH SIDE	COPPER	4X5826-01	1	1	1	-
			4Y2434-01				1
47	COPPER TUBE (I)	COPPER	4X5823-01	1	1	1	1
48	TEE	COPPER	420041-09	1	1	1	1
49	STRAINER	COPPER	430365-02	1	1	1	1
50	CLANKCASE HEATER	CH-214	452207-01			1	1
51	PIPE(C-2)	COPPER	4Y2436-01				1
52	PRESSURE SWITCH	SEP-P320HHD-1	459868-03				1

**HE, GENERAL, KOREA, HSP, AUSTRALIA**

MODEL : <b>IM-240DME</b>							
<b>IM-240DME-21, -23, -32</b>				TITLE : <b>B. REFRIGERATION ASSY</b>			
INDEX NO.	DESCRIPTION	MATERIAL OR MODEL NUMBER	PART NUMBER	REQ'D NUMBER			
				E-1	E-2 F-0	F-1 G-0	G-1 H-0 U-0
28	INSULATION	25 ID x 30 OD	4X8643-01	1	1	1	1
	(FOR FOOD ZONE)	L=130					
29	TIE	CV-100	7920-0002	3	3	3	3
30	PIPE	COPPER	4Y1833-01	1	1	1	1
31	ACCESS VALVE	TCJ-2F15NHD-1	455119-01	1	1	1	1
32	PIPE (B) - LOW SIDE	COPPER	4H3668G02	1	1	1	1
33							
34	HEAT EXCHANGER	-	-				
			3X9153G01	1	1	1	1
35	COPPER TUBE (G) - HOT GAS	COPPER	4X5825-01	1	1	1	1
36	GROMMET		434922-02	4	4	4	4
37	TEE	COPPER	420041-03	1	1	1	1
38	GUARD - CONDENSER	G.S	3H8247-01	2	2	2	2
39	SEAL	t3 x W2 x L360	1H1803-62	1	1	1	-
			1H3062-62				1
40	CLIP	068N2531	452254-02	2	2	2	2
41	SPACER		434921-01	4	4	4	4
42	TIE	CV-100	7920-0002	2	2	2	2
43	PROCESS TUBE	COPPER	4X5343-01	2	2	2	2
44	TEE	COPPER	420041-03	1	1	1	1
45	-	-	-				
46	PIPE (F) - HIGH SIDE	COPPER	-				
			4Y2434-01	1	1	1	1
47	COPPER TUBE (I)	COPPER	4X5823-01	1	1	1	1
48	TEE	COPPER	420041-09	1	1	1	1
49	STRAINER	COPPER	430365-02	1	1	1	1
50	CLANKCASE HEATER	CH-214	452207-01	1	1	1	1
51	PIPE(C-2)	COPPER	4Y2436-01	1	1	1	1
52	PRESSURE SWITCH	SEP-P320HHD-1	459868-03	1	1	1	1



IM-240DME

IM-240DME-21, -23, -32

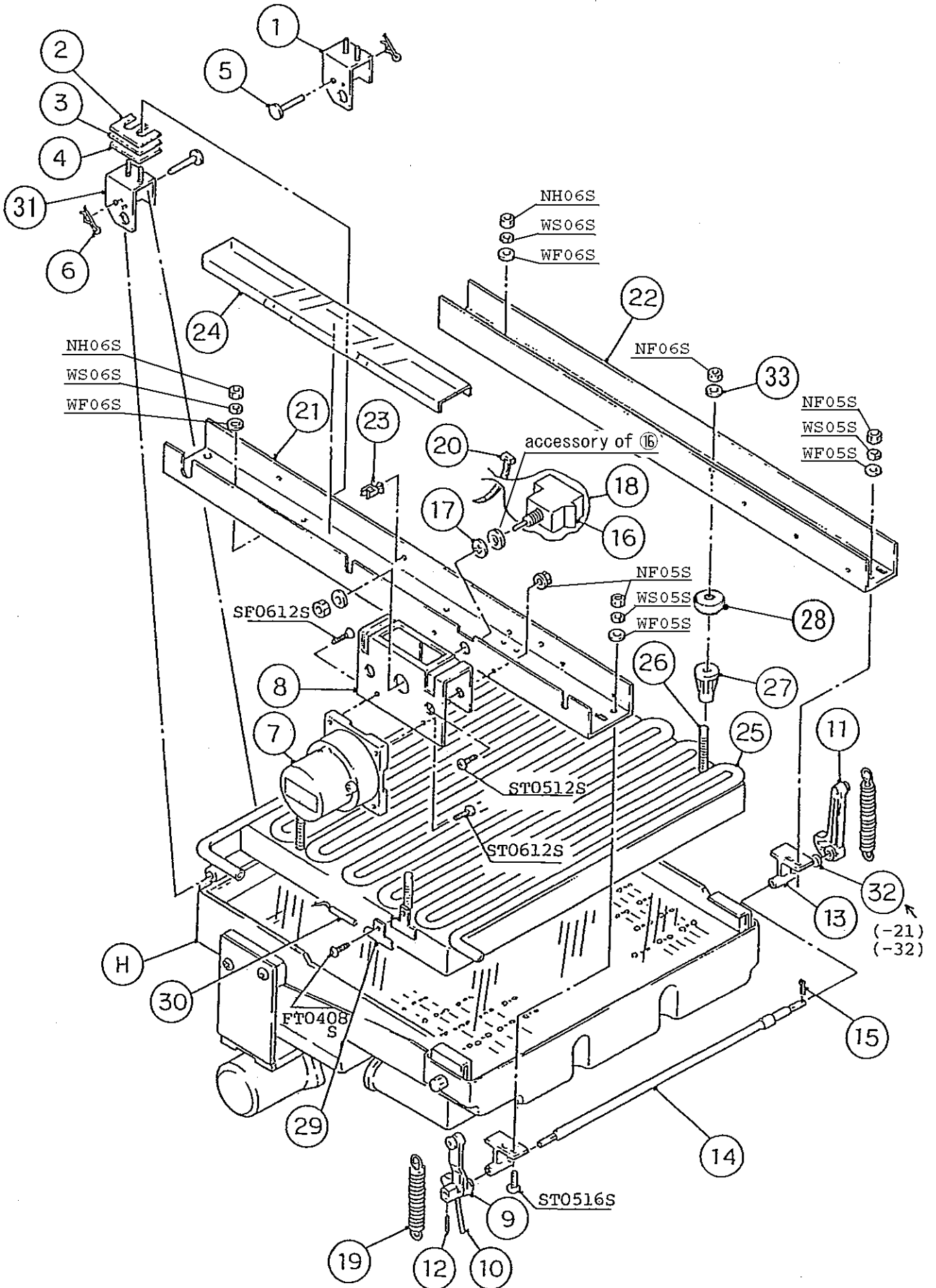
C. ICE MAKING MECHANISM ASSY

(F-0)(F-1) and later

(D-1)(E-0)(E-1)(E-2)

(B-1)(C-0)(C-1)(D-0)

(J-1)(K-0)(A-0)(B-0)



**HE, GENERAL, KOREA, HSP, AUSTRALIA**

MODEL : <b>IM-240DME</b>								
<b>IM-240DME-21, -23, -32</b>				TITLE : <b>C. ICE MAKING MECHANISM ASSY</b>				
INDEX NO.	DESCRIPTION	MATERIAL OR MODEL NUMBER	PART NUMBER	REQ'D NUMBER				
				J-1,K-0 A-0,B-0	B-1 C-0	C-1 D-0	D-1 E-0	
H	WATER PAN ASSY (S-9129)	(240DME, -23)	103108A19	1	1	1	1	
	WATER PAN ASSY (S-0437)	(240DME-21)	103108A05	1	1	1	1	
	WATER PAN ASSY (S-0729)	(240DME-32)	103108A11	1	1	1	1	
1	BEARING PLATE	S.S	3H1440G04	1	1	1	1	
2	SHIM (A) - EVAPORATOR	S.S	4H2691-01	REQ'D	REQ'D	REQ'D	REQ'D	
3	SHIM (B) - EVAPORATOR	S.S	4H2691-02	REQ'D	REQ'D	REQ'D	REQ'D	
4	SHIM (C) - EVAPORATOR	S.S	4H2691-03	REQ'D	REQ'D	REQ'D	REQ'D	
5	SHAFT (B)	S.S	4H1184-02	2	2	2	2	
6	SNAP PIN	S.S, No. 6	715S-0006	2	2	2	2	
7	ACTUATOR MOTOR	SR65A41-13	452499-01	1	1	1	1	
8	BRACKET - ACTUATOR MOTOR	TC-0530	3H2241-01	1	1	1	1	
9	CAM (A)	POM	303881A02	1	1	1	1	
10	CHANGE LEVER	S.S	406261-01	1	1	1	1	
11	CAM (B)	AC	315775-01	1	1	1	1	
12	SPRING PIN	S.S, 3x28	712S-0328	1	1	1	1	
13	BEARING-CAM SHAFT	POM	3X8307-01	2	2	2	2	
14	CAM SHAFT	S.S	425511G01	1	1	1	1	
15	SPLIT PIN	S.S, 2x12	711S-0212	1	1	1	1	
16	TOGGLE SWITCH	VAT4-71	431977-01	1	1	1	1	
17	WASHER - TOGGLE SWITCH	S.S	406196-01	1	1	1	1	
18	COVER - THERMISTOR	PE	408163-01	1	1	1	1	
19	SPRING	S.S	4H3473-01	2	2	2	2	
20	TIE	CV-70	7920-0001	1	1	1	1	
21	FRAME - FRONT	(240DME,-21,-23)	3H9652-01	1	1	1	1	
		(240DME-32)	3X1426-01	1	1	1	1	
22	FRAME - REAR	G.S	3H9653-01	1	1	1	1	
23	WIRE SADDLE	LWS-3NA	7830-0003	1	1	1	1	
24	GUIDE - CONNECTOR	PVC	4H5619-01	1	1	1	1	
25	EVAPORATOR	(240DME)	2H7526G01	1	1	1	1	
	EVAPORATOR (S-0858)	(240DME-21)	208205G02	1	1	1	1	
	EVAPORATOR (S-0859)	(240DME-23)	2H1833G02	1	1	1	1	
	EVAPORATOR (S-0873)	(240DME-32)	2H0921G02	1	1	1	1	
26	BOLT - EVAPORATOR MOUNTING	(240DME,-32)	4H2678-01	4	4	4	4	
	BOLT - EVAPORATOR MOUNTING	(240DME-21,-23)	4H2886-01	4	4	4	4	

**HE, GENERAL, KOREA, HSP, AUSTRALIA**

MODEL : <b>IM-240DME</b>							
IM-240DME-21, -23, -32				TITLE : <b>C. ICE MAKING MECHANISM ASSY</b>			
INDEX NO.	DESCRIPTION	MATERIAL OR MODEL NUMBER	PART NUMBER	REQ'D NUMBER			
				E-1	E-2 F-0	F-1 G-0	G-1 H-0 U-0
H	WATER PAN ASSY (S-9129)	(240DME, -23)	103108A19	1	1	1	1
	WATER PAN ASSY (S-0437)	(240DME-21)	103108A05	1	1	1	1
	WATER PAN ASSY (S-0729)	(240DME-32)	103108A11	1	1	1	1
1	BEARING PLATE	S.S	3H1440G04	1	1	1	1
2	SHIM (A) - EVAPORATOR	S.S	4H2691-01	REQ'D	REQ'D	REQ'D	REQ'D
3	SHIM (B) - EVAPORATOR	S.S	4H2691-02	REQ'D	REQ'D	REQ'D	REQ'D
4	SHIM (C) - EVAPORATOR	S.S	4H2691-03	REQ'D	REQ'D	REQ'D	REQ'D
5	SHAFT (B)	S.S	4H1184-02	2	2	2	2
6	SNAP PIN	S.S, No. 6	715S-0006	2	2	2	2
7	ACTUATOR MOTOR	SR65A41-13	452499-01	1	1	1	1
8	BRACKET - ACTUATOR MOTOR	TC-0530	3H2241-01	1	1	1	1
9	CAM (A)	POM	303881A02	1	1	1	1
10	CHANGE LEVER	S.S	406261-01	1	1	1	1
11	CAM (B)	AC	315775-01	1	1	1	1
12	SPRING PIN	S.S, 3x28	712S-0328	1	1	1	1
13	BEARING-CAM SHAFT	POM	3X8307-01	2	2	2	2
14	CAM SHAFT	S.S	425511G01	1	1	1	1
15	SPLIT PIN	S.S, 2x12	711S-0212	1	1	1	1
16	TOGGLE SWITCH	VAT4-71	431977-01	1	1	1	1
17	WASHER - TOGGLE SWITCH	S.S	406196-01	1	1	1	1
18	COVER - THERMISTOR	PE	408163-01	1	1	1	1
19	SPRING	S.S	4H3473-01	2	2	2	2
20	TIE	CV-70	7920-0001	1	1	1	1
21	FRAME - FRONT	(240DME,-21,-23)	3H9652-01	1	1	1	1
		(240DME-32)	3X1426-01	1	1	1	1
22	FRAME - REAR	G.S	3H9653-01	1	1	1	1
23	WIRE SADDLE	LWS-3NA	7830-0003	1	1	1	1
24	GUIDE - CONNECTOR	PVC	4H5619-01	1	1	1	1
25	EVAPORATOR	(240DME)	2H7526G01	1	1	1	1
	EVAPORATOR (S-0858)	(240DME-21)	208205G02	1	1	1	1
	EVAPORATOR (S-0859)	(240DME-23)	2H1833G02	1	1	1	1
	EVAPORATOR (S-0873)	(240DME-32)	2H0921G02	1	1	1	1
26	BOLT - EVAPORATOR MOUNTING	(240DME,-32)	4H2678-01	4	4	4	4
	BOLT - EVAPORATOR MOUNTING	(240DME-21,-23)	4H2886-01	4	4	4	4

**HE, GENERAL, KOREA, HSP, AUSTRALIA**

MODEL : <b>IM-240DME</b>							
IM-240DME-21, -23, -32				TITLE : <b>C. ICE MAKING MECHANISM ASSY</b>			
INDEX NO.	DESCRIPTION	MATERIAL OR MODEL NUMBER	PART NUMBER	REQ'D NUMBER			
				U-1 V-0 L-0			
H	WATER PAN ASSY (S-9129)	(240DME, -23)	103108A19	1			
	WATER PAN ASSY (S-0437)	(240DME-21)	103108A05	1			
	WATER PAN ASSY (S-0729)	(240DME-32)	103108A11	1			
1	BEARING PLATE	S.S	3H1440G04	1			
2	SHIM (A) - EVAPORATOR	S.S	4H2691-01	REQ'D			
3	SHIM (B) - EVAPORATOR	S.S	4H2691-02	REQ'D			
4	SHIM (C) - EVAPORATOR	S.S	4H2691-03	REQ'D			
5	SHAFT (B)	S.S	4H1184-02	2			
6	SNAP PIN	S.S, No. 6	715S-0006	2			
7	ACTUATOR MOTOR	SR65A41-13	452499-01	1			
8	BRACKET - ACTUATOR MOTOR	TC-0530	3H2241-01	1			
9	CAM (A)	POM	303881A02	1			
10	CHANGE LEVER	S.S	406261-01	1			
11	CAM (B)	AC	315775-01	1			
12	SPRING PIN	S.S, 3x28	712S-0328	1			
13	BEARING-CAM SHAFT	POM	3X8307-01	2			
14	CAM SHAFT	S.S	425511G01	1			
15	SPLIT PIN	S.S, 2x12	711S-0212	1			
16	TOGGLE SWITCH	VAT4-71	431977-01	1			
17	WASHER - TOGGLE SWITCH	S.S	406196-01	1			
18	COVER - THERMISTOR	PE	408163-01	1			
19	SPRING	S.S	4H3473-01	2			
20	TIE	CV-70	7920-0001	1			
21	FRAME - FRONT	(240DME, -21, -23)	3H9652-01	1			
		(240DME-32)	3X1426-01	1			
22	FRAME - REAR	G.S	3H9653-01	1			
23	WIRE SADDLE	LWS-3NA	7830-0003	1			
24	GUIDE - CONNECTOR	PVC	4H5619-01	1			
25	EVAPORATOR	(240DME)	2H7526G01	1			
	EVAPORATOR (S-0858)	(240DME-21)	208205G02	1			
	EVAPORATOR (S-0859)	(240DME-23)	2H1833G02	1			
	EVAPORATOR (S-0873)	(240DME-32)	2H0921G02	1			







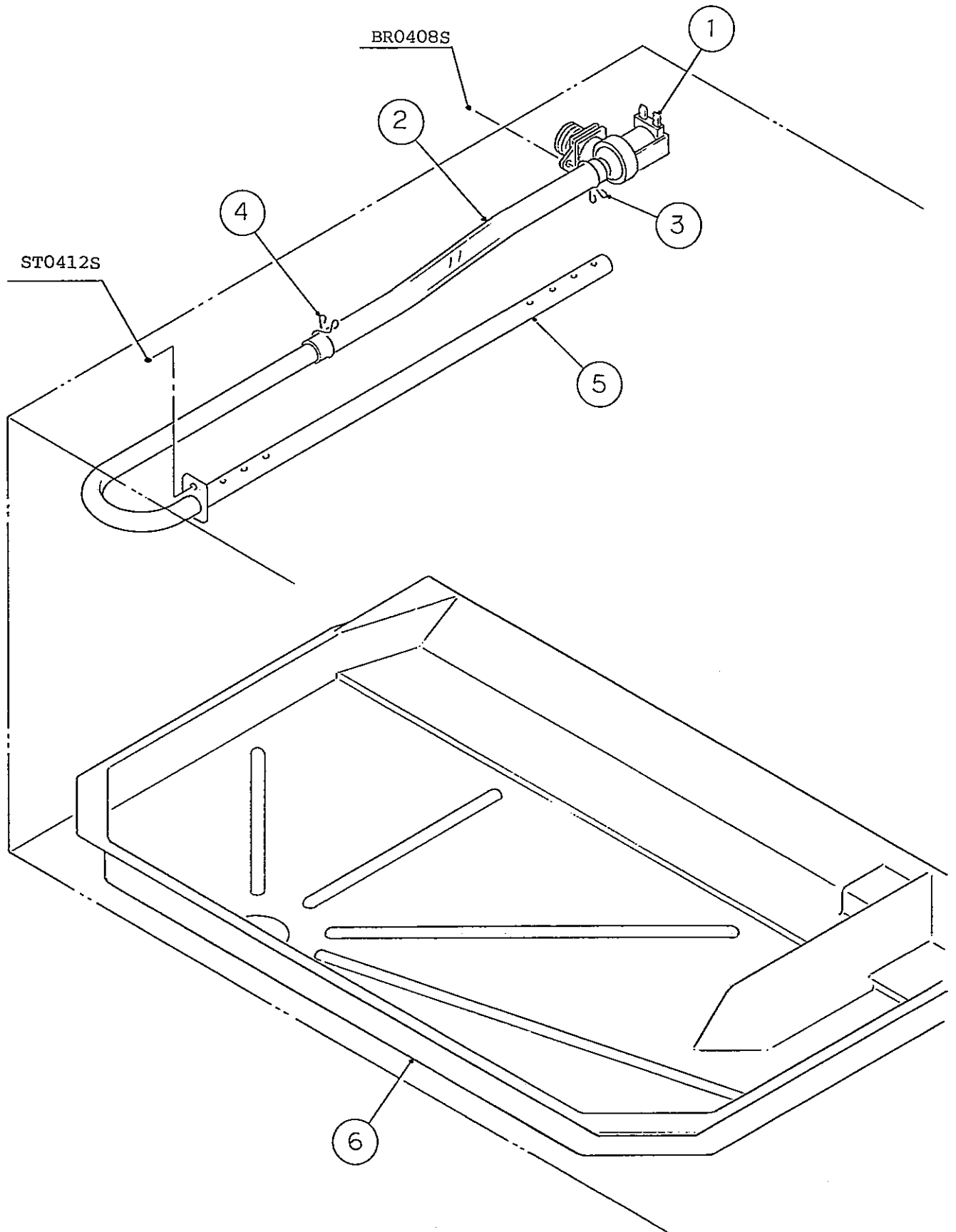
HE, GENERAL, KOREA, HSP, AUSTRALIA

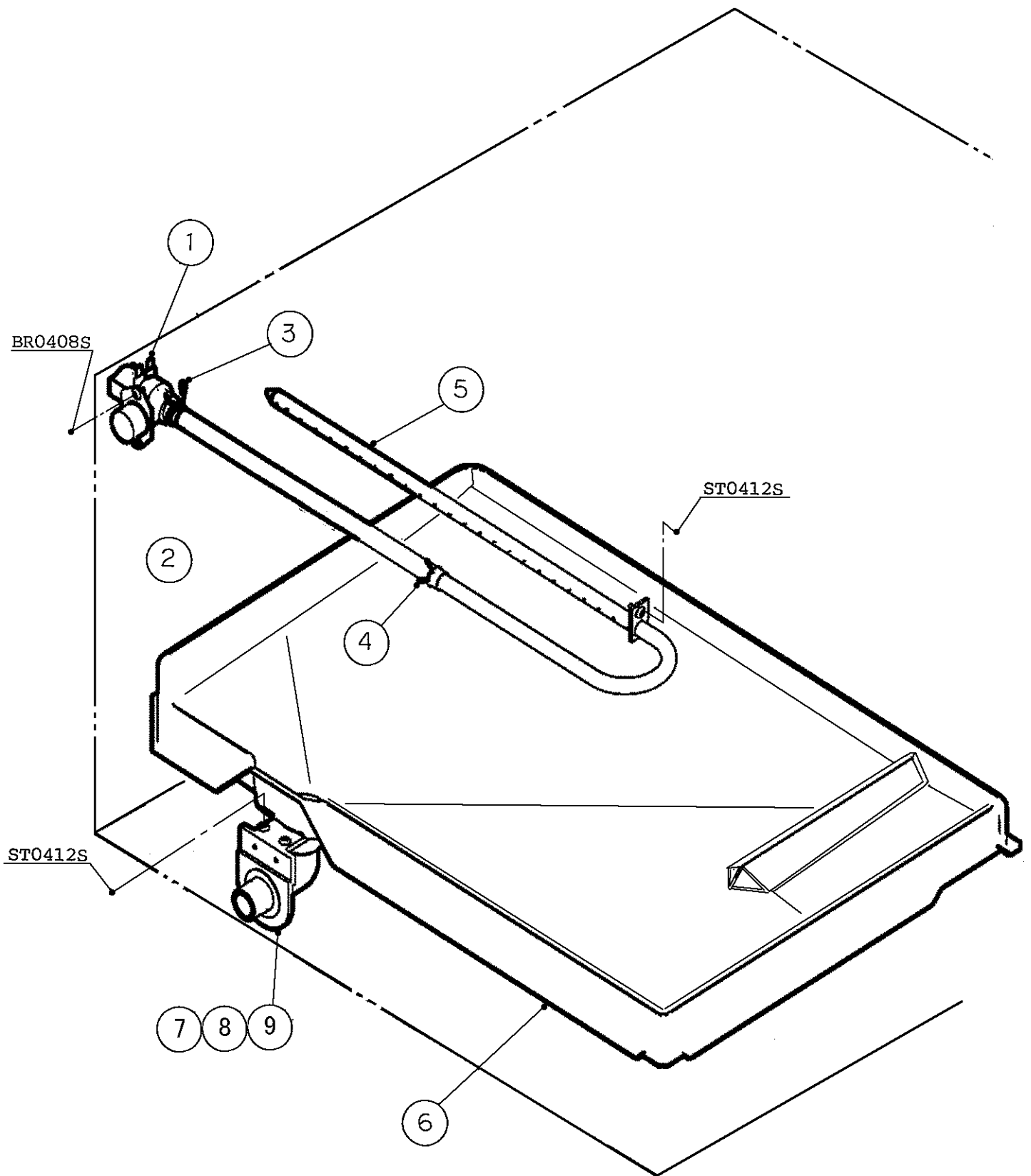
MODEL : IM-240DME							
IM-240DME-21, -23, -32				TITLE : C. ICE MAKING MECHANISM ASSY			
INDEX NO.	DESCRIPTION	MATERIAL OR MODEL NUMBER	PART NUMBER	REQ'D NUMBER			
				U-1	V-0	L-0	
26	BOLT - EVAPORATOR MOUNTING	(240DME,-32)	4H2678-01	—			
	SCREW EVAPORATOR		4Y4922M02	4			
	BOLT - EVAPORATOR MOUNTING	(240DME-21,-23)	4H2886-01	—			
	SCREW EVAPORATOR		4Y4922M03	4			
27	COLLAR	(240DME)	3H3879-01	4			
		(240DME-21,-23)	4H0471-01	4			
28	WASHER	(240DME-21)	4H1365-06	4			
		(240DME-23)	4H1365-05	4			
29	HOLDER - THERMISTOR	PE	3H9642-01	1			
30	THERMISTOR-CUBE CONTROL		462976-01	1			
31	BEARING PLATE	S.S	3H1440G03	1			
32	COLLAR	(240DME-21,-32)	429124-01	1			
33	WASHER	AC	4H0777-01	4			

IM-240DME  
IM-240DME-21,-23,-32

D. WATER CIRCUIT ASSY

(H-0)(U-0)  
(F-0)(F-1)(G-0)(G-1)  
(D-1)(E-0)(E-1)(E-2)  
(B-1)(C-0)(C-1)(D-0)  
(J-1)(K-0)(A-0)(B-0)













IM-240DME

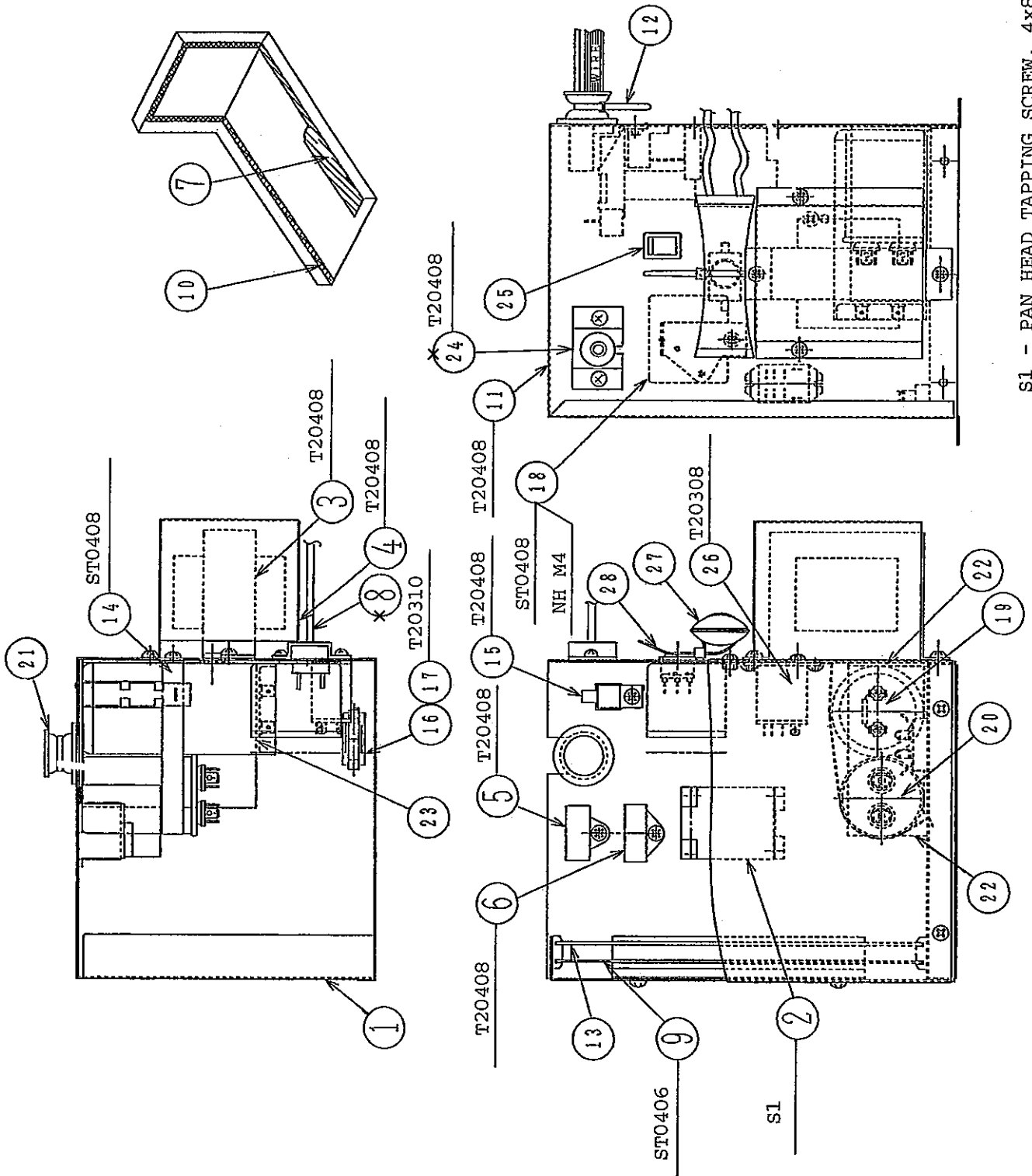
IM-240DME-21, -23, -32

E. CONTROL BOX ASSY

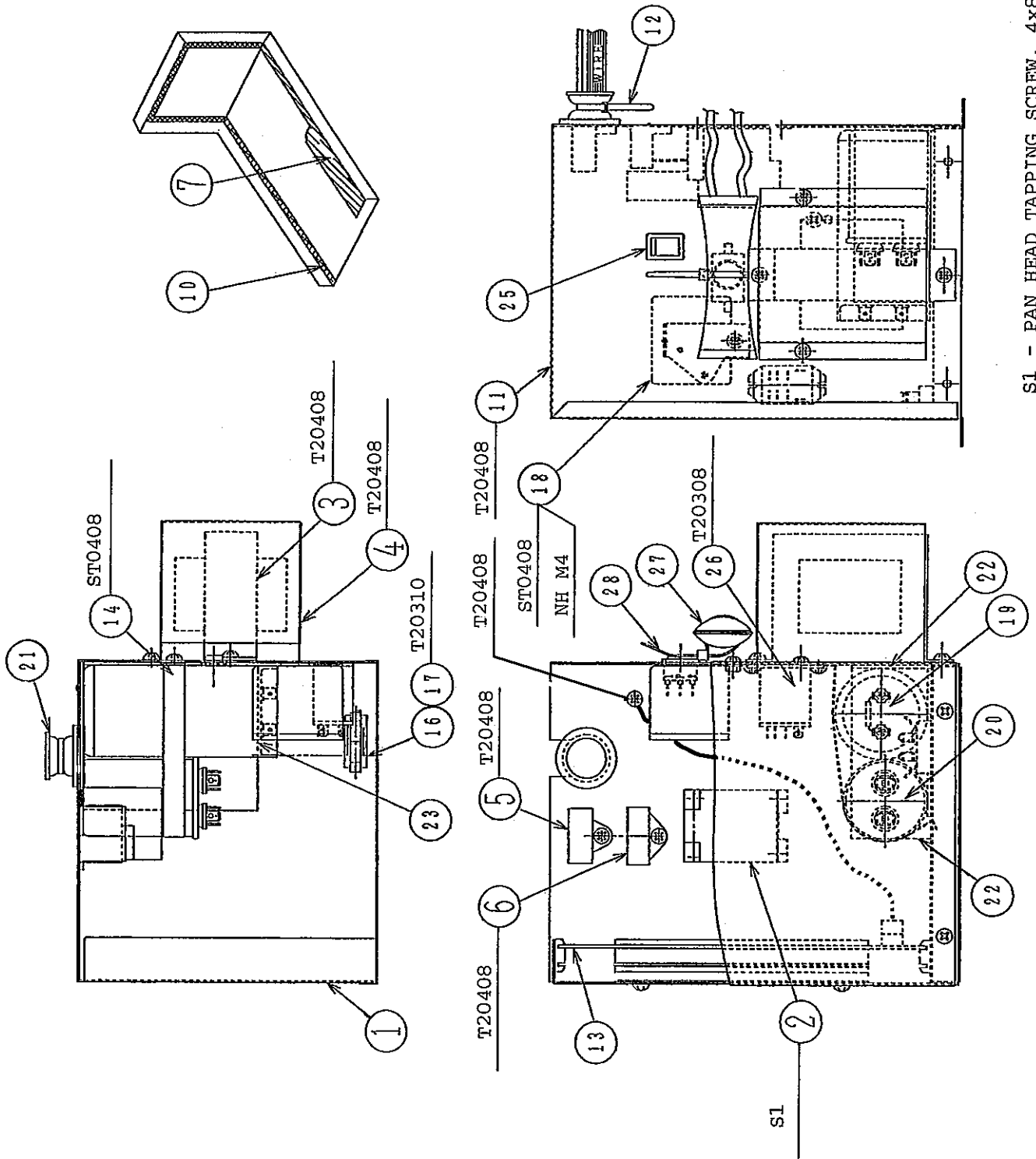
(D-1) (E-0)

(B-1) (C-0) (C-1) (D-0)

(J-1) (K-0) (A-0) (B-0)



S1 - PAN HEAD TAPPING SCREW, 4x8



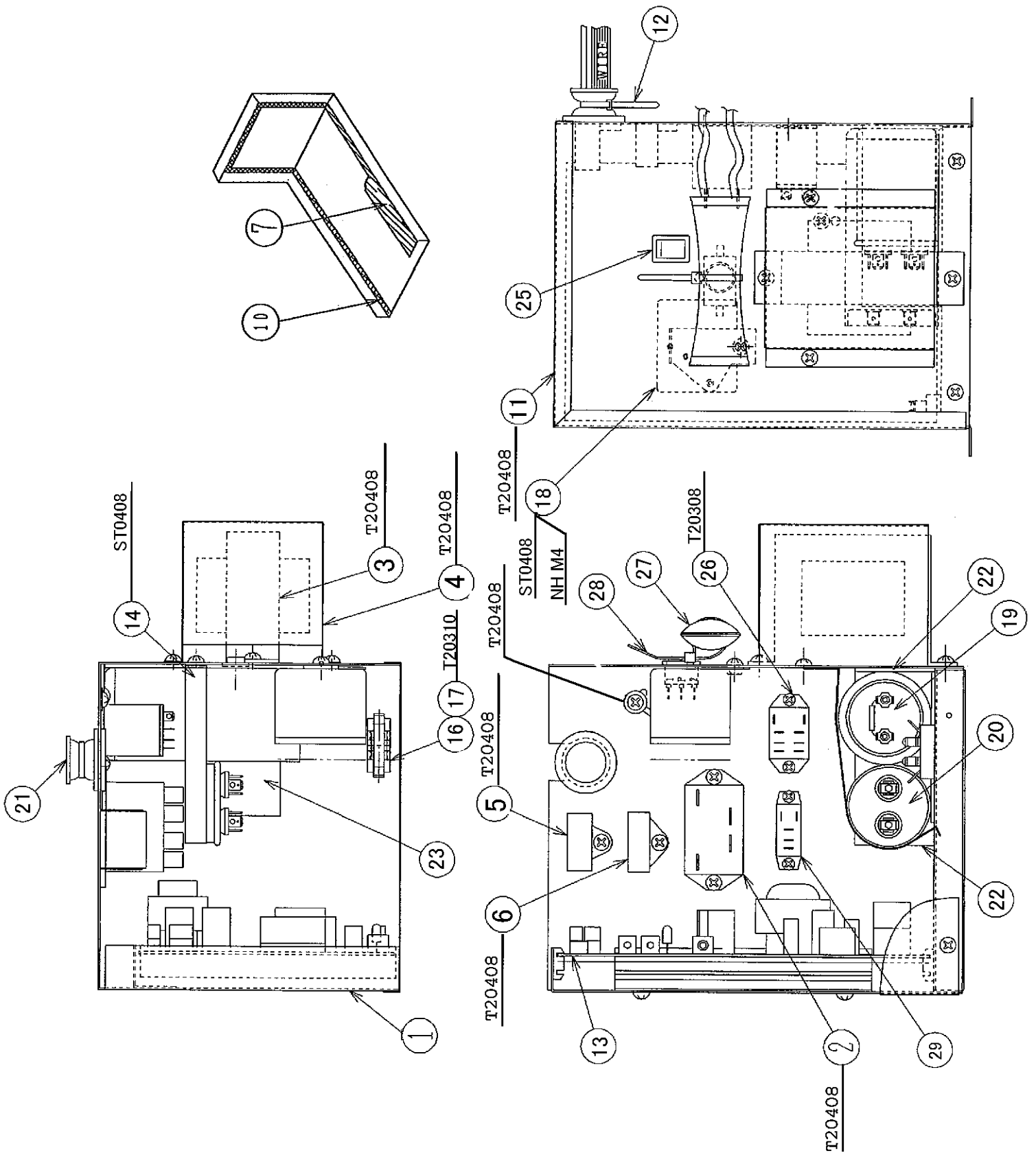
S1 - PAN HEAD TAPPING SCREW, 4x8

IM-240DME

IM-240DME-21, -23, -32

E. CONTROL BOX ASSY

(F-1) and later



**HE, GENERAL, KOREA, HSP, AUSTRALIA**

MODEL : <b>IM-240DME</b>							
IM-240DME-21, -23, -32				TITLE : <b>E. CONTROL BOX ASSY</b>			
INDEX NO.	DESCRIPTION	MATERIAL OR MODEL NUMBER	PART NUMBER	REQ'D NUMBER			
				J-1,K-0 A-0,B-0	B-1 C-0	C-1 D-0	D-1 E-0
1	CONTROL BOX	G.S	3H9578G03	1	-		
		G.S	3H9578G04		1	1	-
		G.S	3H9578G05				1
		G.S	3Y1081G01				
2	MAGNETIC CONTACTOR	E-10F	426535-01	1	-		
		LC1-K1201K7	461944-01		1	1	1
	POWER RELAY	G7L-1A-TUB	449000-01				
3	TRANSFORMER	S36809	450104-01	1	1	1	1
4	COVER - TRANSFORMER	G.S	4X4065-01	1	1	1	1
5	CAPACITOR - ACTUATOR MOTOR	0.8 uF	456262-01	1	1	1	1
6	CAPACITOR - PUMP MOTOR	4.0 uF	416920-02	1	1	1	1
7	CUSHION	-	4H2718-01	1	1	1	1
8	PRESSURE SWITCH	ACB-1UB09	433441-07	1	1	1	×
9	SHIELD PLATE	G.S	4H2594-01	1	1	1	1
10	SEAL TAPE	W12 x t3.0	2H3965-16	1	1	1	1
11	CONTROL BOX COVER	G.S	3H9571-01	1	1	1	1
12	TIE	PRT1.5S	427466-01	1	1	1	1
13	CONTROLLER BOARD	H2AA136C03	436572-03	1	1	1	1
		H2AE024C18	462975-18				
14	BRACKET - CAPACITOR	(HE)(HSP)(G 50Hz)	4X4056-04	1	1	1	1
		(KOREA)(G 60Hz)	4X4056-06	1	1	1	1
15	SURGE ABSORBER	DSAR3FV-362M-10JLK	436573-02	1	1	1	1
16	FUSE	218005	451924-01	1	1	1	1
17	FUSE HOLDER	445710	451925-01	1	1	1	-
		CFH15	4Y2547-01				1
18	STARTER 3ARR3CT10AS5	(HE) (HSP) (GENERAL 50Hz)	4A1107-02	1	1	1	1
	STARTER 3ARR3CT10V5	(KOREA) (GENERAL 60Hz)	4A1107-12	1	1	1	1
19	START CAPACITOR 3535B7C0064A250A5	(HE) (HSP) (GENERAL 50Hz)	3A0076-14	1	1	1	1
	START CAPACITOR 3530B6A0088A330A3	(KOREA) (GENERAL 60Hz)	3A0076-07	1	1	1	1

**HE, GENERAL, KOREA, HSP, AUSTRALIA**

MODEL : <b>IM-240DME</b>							
IM-240DME-21, -23, -32				TITLE : <b>E. CONTROL BOX ASSY</b>			
INDEX NO.	DESCRIPTION	MATERIAL OR MODEL NUMBER	PART NUMBER	REQ'D NUMBER			
				E-1	E-2 F-0	F-1 G-0	G-1 H-0 U-0
1	CONTROL BOX	G.S	3H9578G05	1	1	-	
		G.S	3Y1081G01			1	1
2	MAGNETIC CONTACTOR	-	-				
		LC1-K1201K7	461944-01	1	1	-	
	POWER RELAY	G7L-1A-TUB	449000-01			1	1
3	TRANSFORMER	S36809	450104-01	1	1	1	1
4	COVER - TRANSFORMER	G.S	4X4065-01	1	1	1	1
5	CAPACITOR - ACTUATOR MOTOR	0.8 uF	456262-01	1	1	1	1
6	CAPACITOR - PUMP MOTOR	4.0 uF	416920-02	1	1	1	1
7	CUSHION	-	4H2718-01	1	1	1	1
8	-	-	-				
9	SHIELD PLATE	G.S	4H2594-01	×			
10	SEAL TAPE	W12 x t3.0	2H3965-16	-			
			2H6763-14	1	1	-	
			2H7543-14			1	1
11	CONTROL BOX COVER	G.S	3H9571-01	1	1	1	1
12	TIE	PRT1.5S	427466-01	1	1	1	1
13	CONTROLLER BOARD	H2AA136C03	436572-03	-			
		H2AE024C18	462975-18	1	1	1	1
14	BRACKET - CAPACITOR	(HE)(HSP)(G 50Hz)	4X4056-04	1	1	1	1
		(KOREA)(G 60Hz)	4X4056-06	1	1	1	1
15	SURGE ABSORBER	DSAR3FV-362M-10JLK	436573-02	×			
16	FUSE	218005	451924-01	1	1	1	1
17	FUSE HOLDER	-	-				
		CFH15	4Y2547-01	1	1	1	1
18	STARTER	(HE) (HSP)	4A1107-02	1	1	1	1
	3ARR3CT10AS5	(GENERAL 50Hz)					
	STARTER	(KOREA)	4A1107-12	1	1	1	1
3ARR3CT10V5	(GENERAL 60Hz)						
19	START CAPACITOR	(HE) (HSP)	3A0076-14	1	1	1	1
	3535B7C0064A250A5	(GENERAL 50Hz)					
	START CAPACITOR	(KOREA)	3A0076-07	1	1	1	1
3530B6A0088A330A3	(GENERAL 60Hz)						

**HE, GENERAL, KOREA, HSP, AUSTRALIA**

MODEL : <b>IM-240DME</b>							
IM-240DME-21, -23, -32				TITLE : <b>E. CONTROL BOX ASSY</b>			
INDEX NO.	DESCRIPTION	MATERIAL OR MODEL NUMBER	PART NUMBER	REQ'D NUMBER			
				U-1 V-0 L-0			
1	CONTROL BOX	G.S	3Y1081G01	1			
2	POWER RELAY	G7L-1A-TUB	449000-01	1			
3	TRANSFORMER	S36809	450104-01	1			
4	COVER - TRANSFORMER	G.S	4X4065-01	1			
5	CAPACITOR - ACTUATOR MOTOR	0.8 uF	456262-01	1			
6	CAPACITOR - PUMP MOTOR	4.0 uF	416920-02	1			
7	CUSHION	-	4H2718-01	1			
8	-	-	-				
9	-	-	-				
10	SEAL TAPE	W12 x t3.0	2H7543-14	1			
11	CONTROL BOX COVER	G.S	3H9571-01	1			
12	TIE	PRT1.5S	427466-01	1			
13	CONTROLLER BOARD	H2AE024C18	462975-18	1			
14	BRACKET - CAPACITOR	(HE)(HSP)(G 50Hz)	4X4056-04	1			
		(KOREA)(G 60Hz)	4X4056-06	1			
15	-	-	-				
16	FUSE	218005	451924-01	1			
17	FUSE HOLDER	CFH15	4Y2547-01	1			
18	STARTER 3ARR3CT10AS5	(HE) (HSP) (GENERAL 50Hz)	4A1107-02	1			
	STARTER 3ARR3CT10V5	(KOREA) (GENERAL 60Hz)	4A1107-12	1			
19	START CAPACITOR 3535B7C0064A250A5	(HE) (HSP) (GENERAL 50Hz)	3A0076-14	1			
	START CAPACITOR 3530B6A0088A330A3	(KOREA) (GENERAL 60Hz)	3A0076-07	1			
20	RUN CAPACITOR X386S (HG17)	(HE) (HSP) (GENERAL 50Hz)	4A1631-01	1			
	RUN CAPACITOR X386S (HG08)	(KOREA) (GENERAL 60Hz)	439943-06	1			
21	GROMMET	NBR	4H2568-01	1			
22	COVER (A) - CAP	ABS	4X4779-01	2			
23	COVER (B) - CAP	ABS	4X4779-02	1			
24	-	-	-				





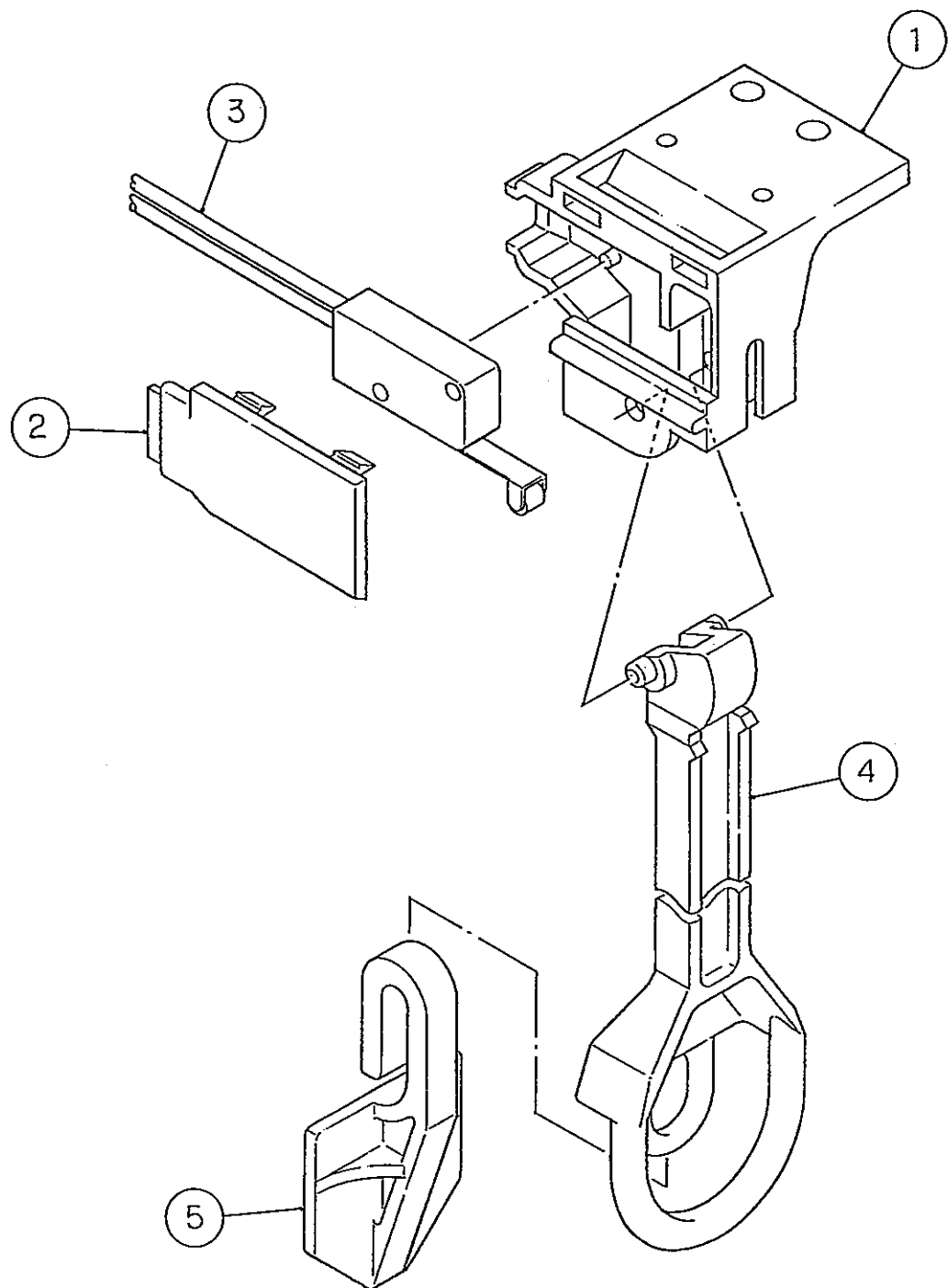




IM-240DME  
IM-240DME-21,-23,-32

F. BIN CONTROL SWITCH

(D-1) (E-0) (E-1) and later  
(B-1) (C-0) (C-1) (D-0)  
(J-1) (K-0) (A-0) (B-0)





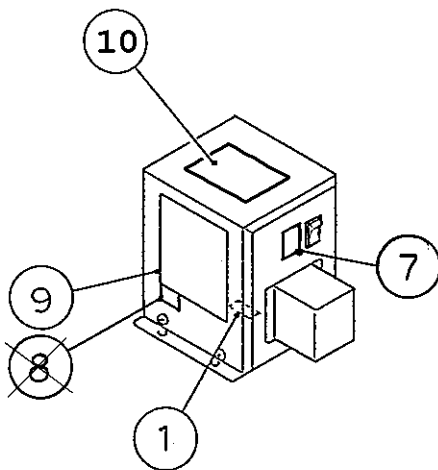
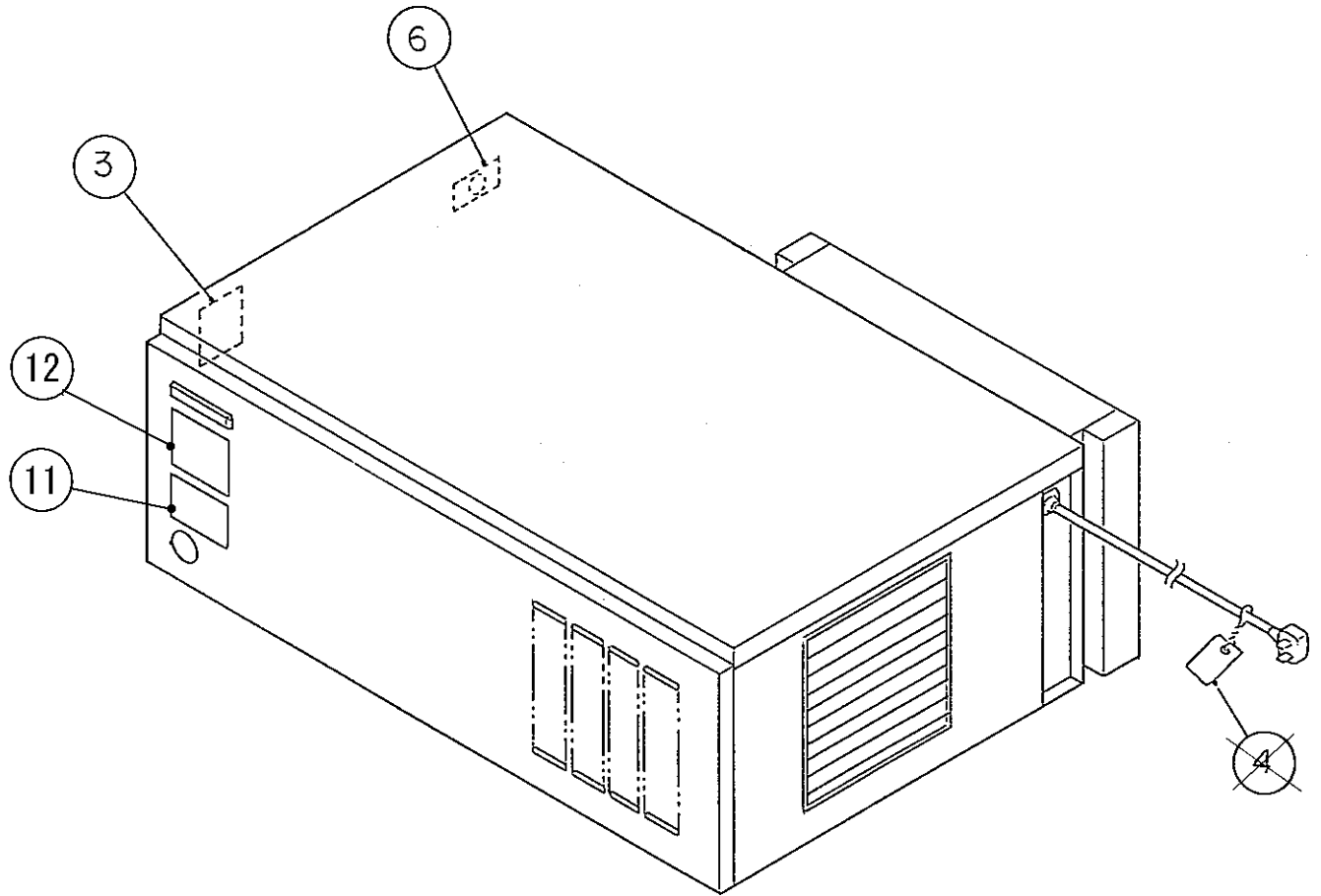




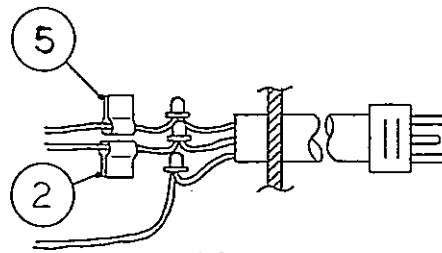
IM-240DME  
IM-240DME-21,-23,-32

G. LABEL LOCATION

(D-1) (E-0) (E-1) and later  
(B-1) (C-0) (C-1) (D-0)  
(J-1) (K-0) (A-0) (B-0)



CONTROL BOX



POWER CORD













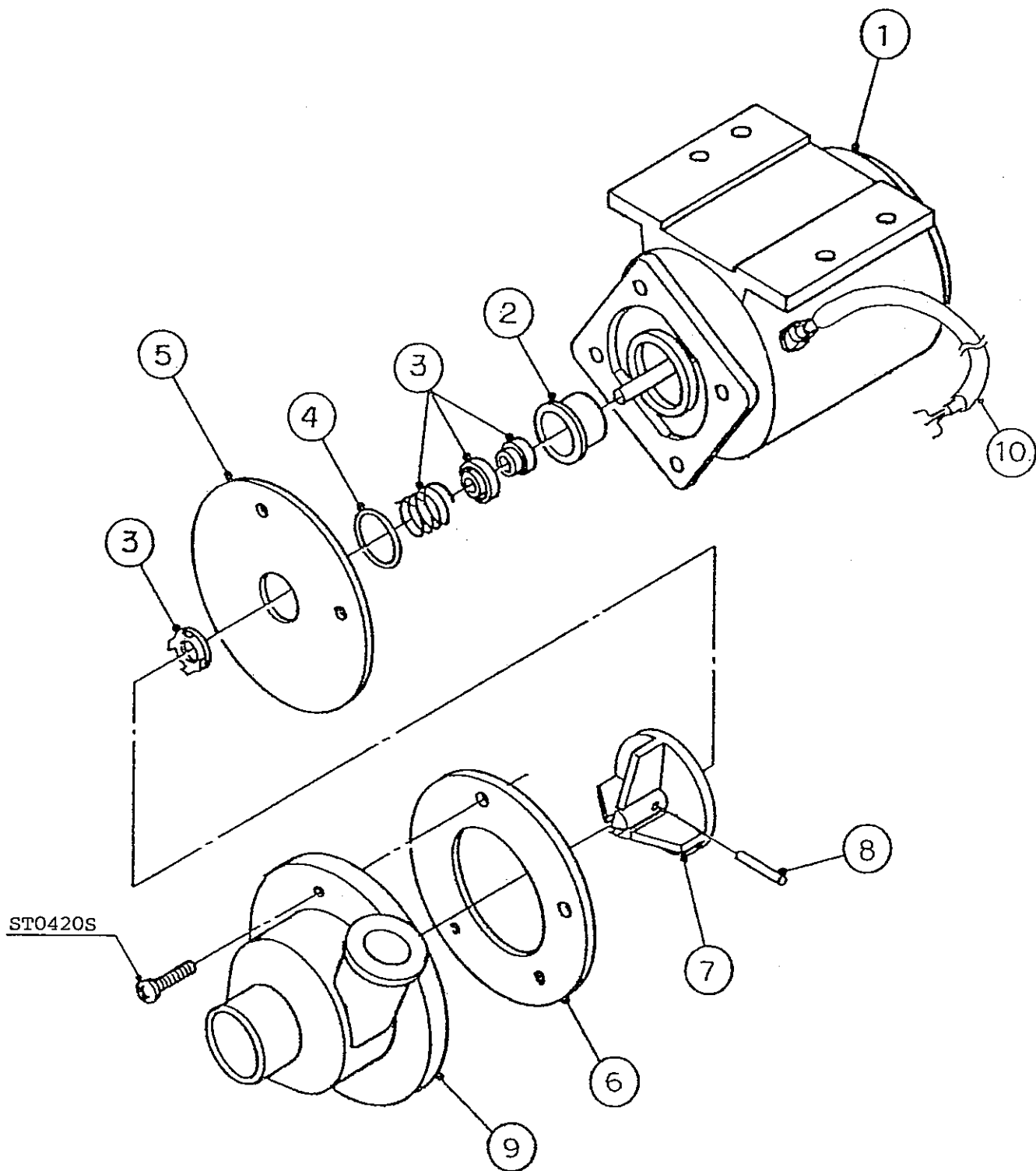




IM-240DME  
IM-240DME-21, -23, -32

J. POMP MOTOR ASSY

(D-1) (E-0) (E-1) and later  
(B-1) (C-0) (C-1) (D-0)  
(J-1) (K-0) (A-0) (B-0)









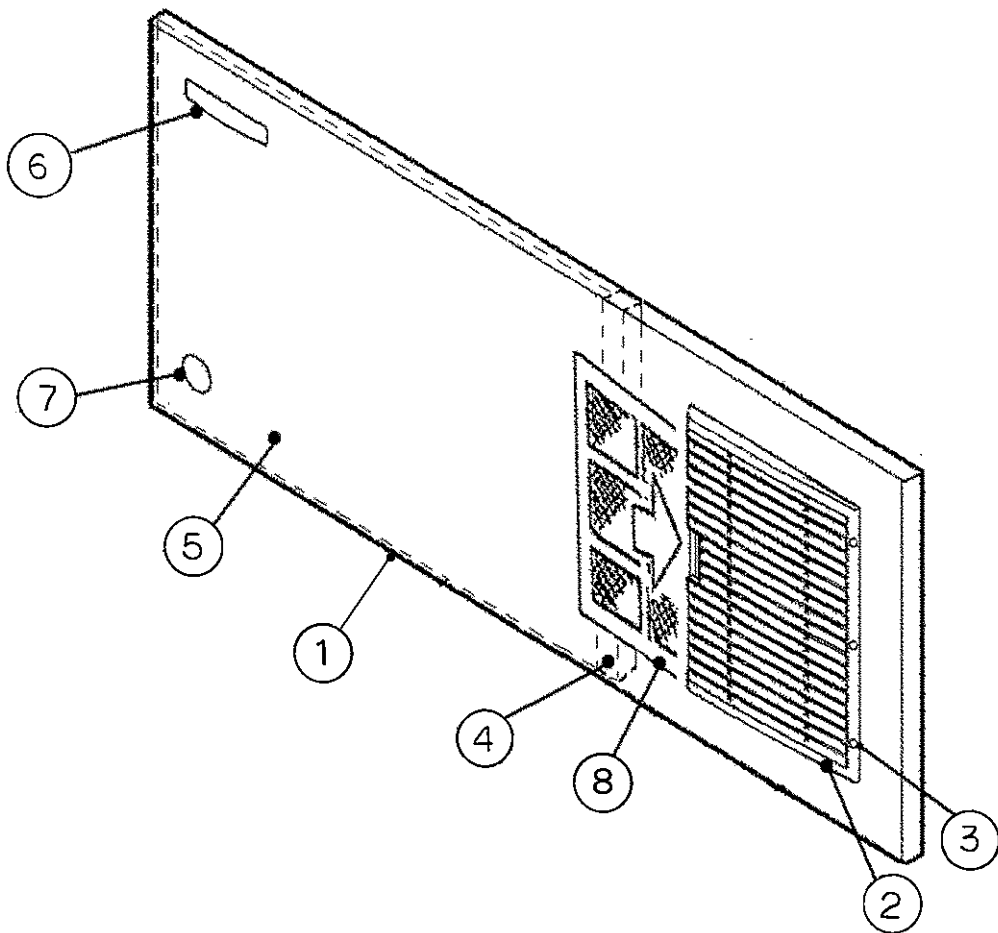


IM-240DME

IM-240DME-21, -23, -32

K. FRONT COVER ASSY

(U-1) and later





IM-240DME  
IM-240DME-21,-23,-32

L. ACCESSORIES

(D-1) (E-0) (E-1) and later  
(B-1) (C-0) (C-1) (D-0)  
(J-1) (K-0) (A-0) (B-0)

