



First Choice Group

SPARE PARTS DIAGRAM FOR



CLEVELAND

A Welbilt Brand

Stand Units

ST-28

ST-42

ST-55

EST-28

ST-28B



First Choice Group
Blakeney Way, Kingswood Lakeside
Cannock, Staffs, WS11 8LD
TEL: 01543 577778 FAX: 01543504141
Email: enquires@firstchoice-cs.co.uk
Web: www.firstchoice-cs.co.uk



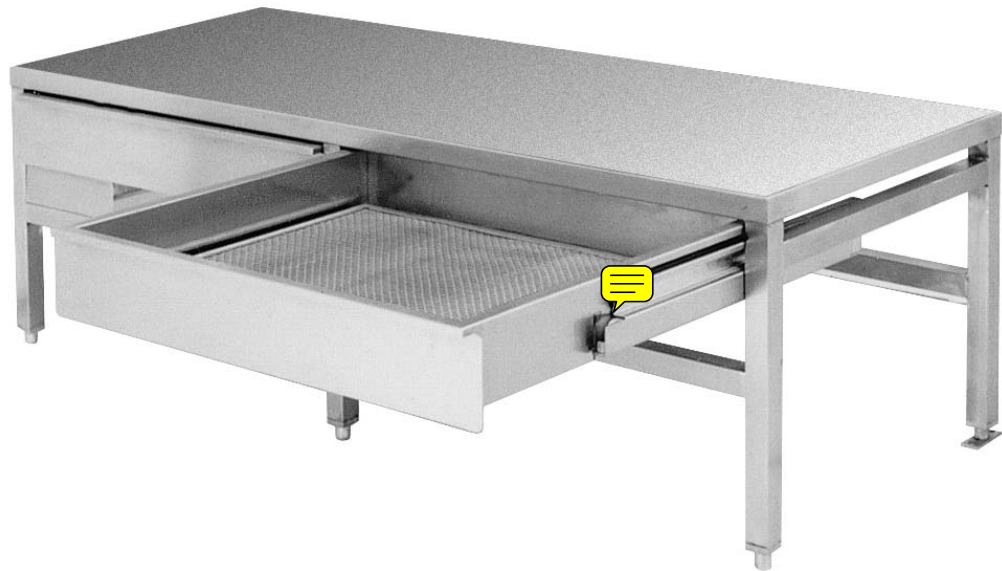
Operators Manual

Installation, Operation & Service

ST Equipment Stands

MODELS:

ST-28
ST-42
ST-55
EST-28
ST-28B



WARNING:

- ⇒ Stand **must be** bolted to floor.
- ⇒ Any unit mounted on this stand **must be** bolted in place.
- ⇒ Failure to do so may result in serious injury.



Enodis

1333 East 179th St., Cleveland, Ohio, U.S.A. 44110

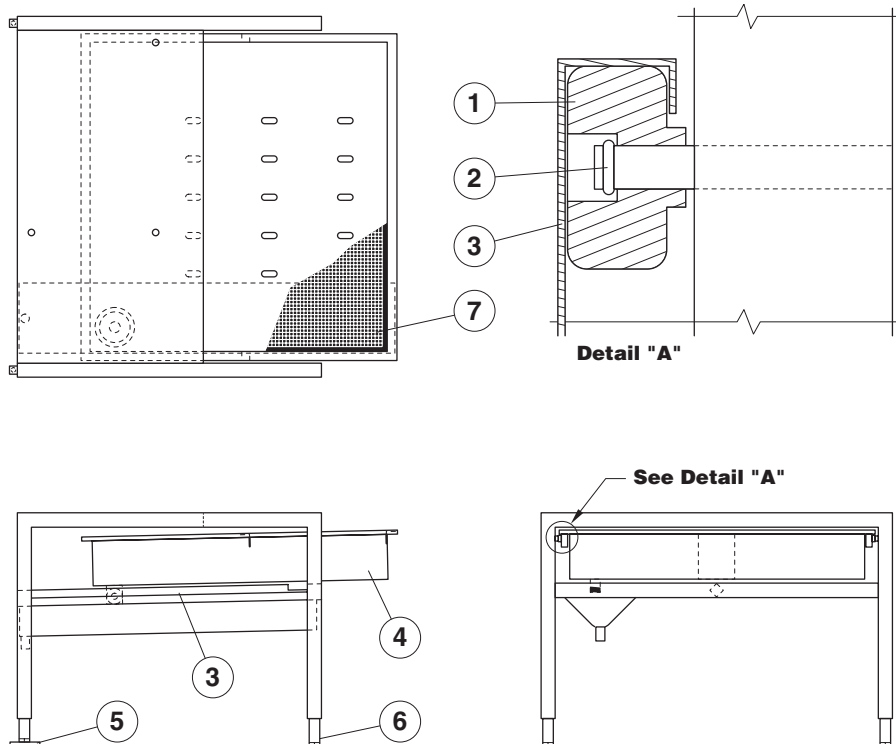
Phone: (216) 481-4900 Fax: (216) 481-3782
Visit our web site at www.clevelandrange.com

SERVICE PARTS

WARRANTY

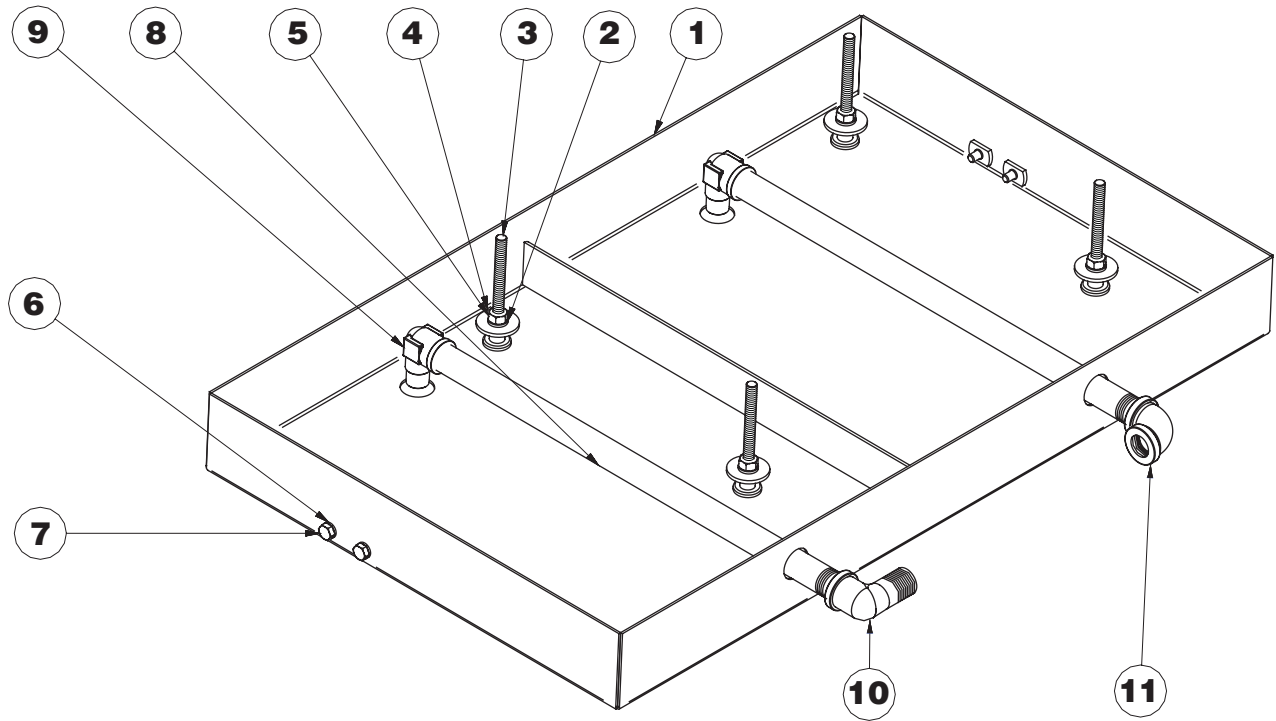
Our Company supports a worldwide network of Maintenance and Repair Centers. Contact your nearest Maintenance and Repair Centre for replacement parts, service, or information regarding the proper maintenance and repair of your cooking equipment

In order to preserve the various agency safety certification (UL, NSF, ASME/Ntl. Bd., etc.), only factory-supplied replacement parts should be used. The use of other than factory supplied replacement parts will void warranty.



ITEM NO.	PART NO.	DESCRIPTION	QTY.				
			ST-28	ST-42	ST-55	EST-28	ST-28B
1.	ST50010	WHEEL, SLIDE	4	8	8	-	4
2.	FA95007-2	RETAINING RING	4	8	8	-	4
3.	ST50008-1	SLIDE, LHS	1	2	2	-	1
	ST50008-2	SLIDE, RHS	1	2	2	-	1
4.	ST00003-1	PAN, WELDMENT ASSEMBLY	1	-	2	-	1
	ST00003-2	PAN, WELDMENT ASSEMBLY	-	2	-	-	-
5.	STD00002	REAR FOOT ASSEMBLY	2	3	3	2	2
6.	STD50026	ADJUSTABLE FOOT	2	3	3	2	2
7.	KE02080-1	SPLASH SCREEN	1	-	2	-	1
	KE02080-2	SPLASH SCREEN	1	-	2	-	1

ADAPTOR TOP ASSEMBLY



PART#	KE003607-1	KE003607-2	KE003607-3	KE003607-4		
MODEL	AK-6	AK-12	AK-20	AK-3		
FOR	KDT-6-T	KDT-12-T	KDT-20-T	KDT-3-T		
1	ST00007-1	1			FALSE TOP WELDMENT	
	ST00007-2		1		FALSE TOP WELDMENT	
	ST00007-3			1	FALSE TOP WELDMENT	
	ST00007-4				1	FALSE TOP WELDMENT
2	FA31030	4	4	4	SPLIT LOCKWASHER, 5/16, SS	
3	KE518903	4	4	4	STUD, 5/16-18 x 3 3/4	
4	FA30079	4	4	4	FLAT WASHER, .406 x 1.25 x 120	
5	FA21024	4	4	4	NUT, 5/16-18	
6	FA31029	4	4	4	SPLIT LOCKWASHER, 1/4, SS	
7	FA11257	4	4	4	HEX BOLT, 1/4-20 x 5/8, SS	
8	N0440G16.5	2			NIPPLE, 1/2"	
	N0440G15		2		NIPPLE, 1/2"	
	N0440G12			2	NIPPLE, 1/2"	
	N0440G16.5				2	NIPPLE, 1/2"
9	KE603610	2	2	2	BRASS REDUCING, 1/2" FNPT x 3/8" MNPT	
10	FI05025	1	1	1	ELBOW, 90° STREET, (FIP x MIP)	
11	FI05216	2	2	2	ELBOW, 90°, (FIP x FIR)	