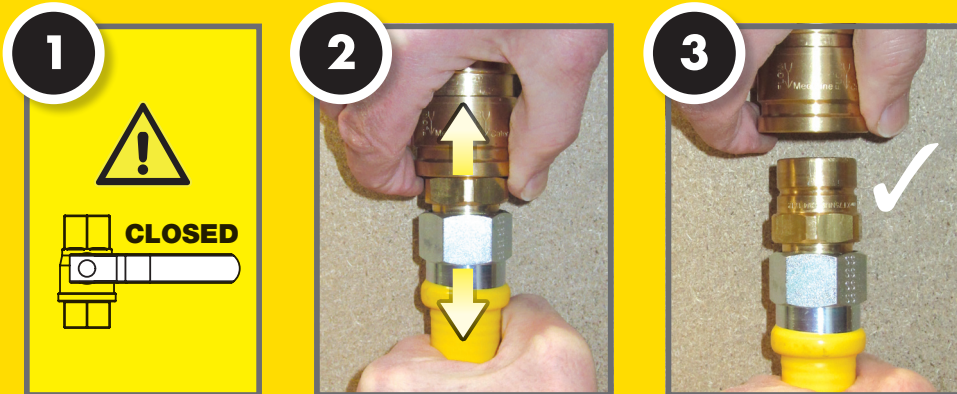


Dormont[®] QUICK DISCONNECT DEVICE & RESTRAINER

The Quick Disconnect (QD) device enables rapid and safe disconnection of gas appliances from the gas supply to allow the appliance to be moved for cleaning etc.

by **MECHLINE**

DISCONNECT...

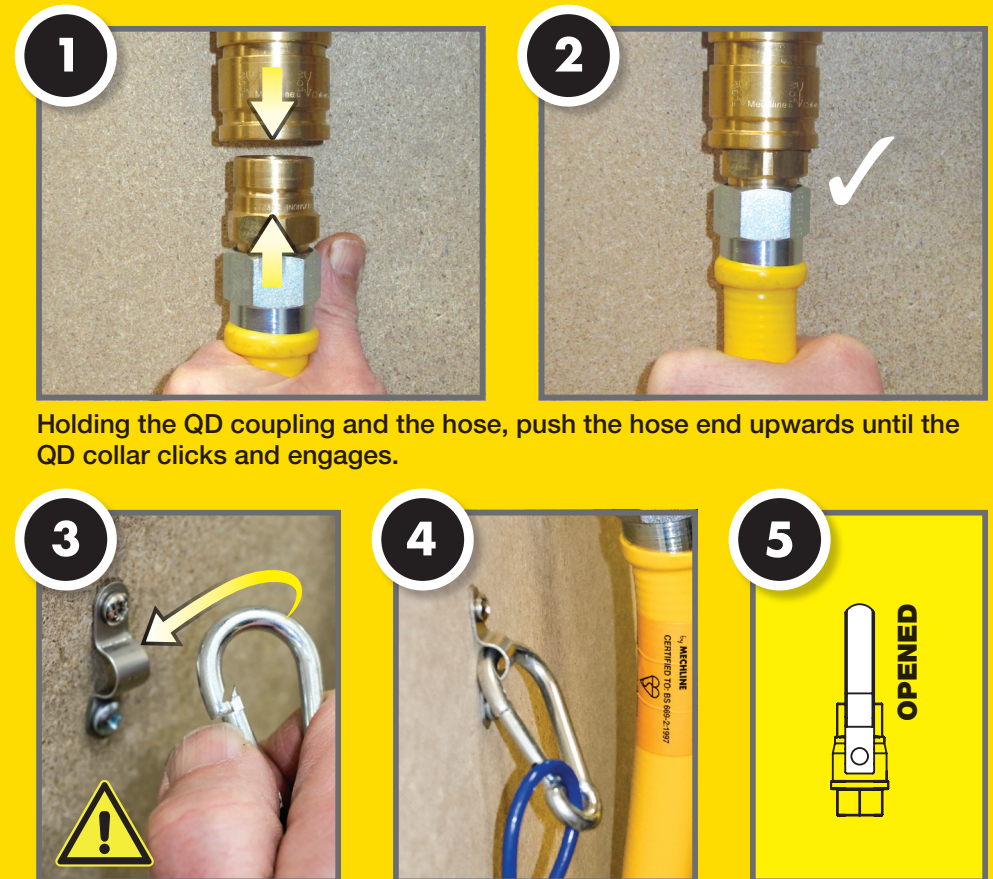


Firstly isolate the gas supply by turning the local isolation valve to the 'closed' position. Grip the outer collar of the QD coupling and, whilst holding the hose, pull back the collar to release the inserted male part.



The restrainer wire can now be disconnected to allow free movement of the appliance.

CONNECT...



It is important to **RECONNECT THE RESTRAINER** after reconnecting the hose to the supply. **DO NOT** move the appliance, with the hose connected, **without** the restrainer in place. Finally return the gas isolation valve to the 'opened' position.